

CERTIFIED CORNER RECORDATION

Corner Sec. 20 West 1/4 T. 25 N R. 21 W P.M.M. Lake County
 Corner Sec. 19 East 1/4 T. 25 N R. 21 W P.M.M. Lake County

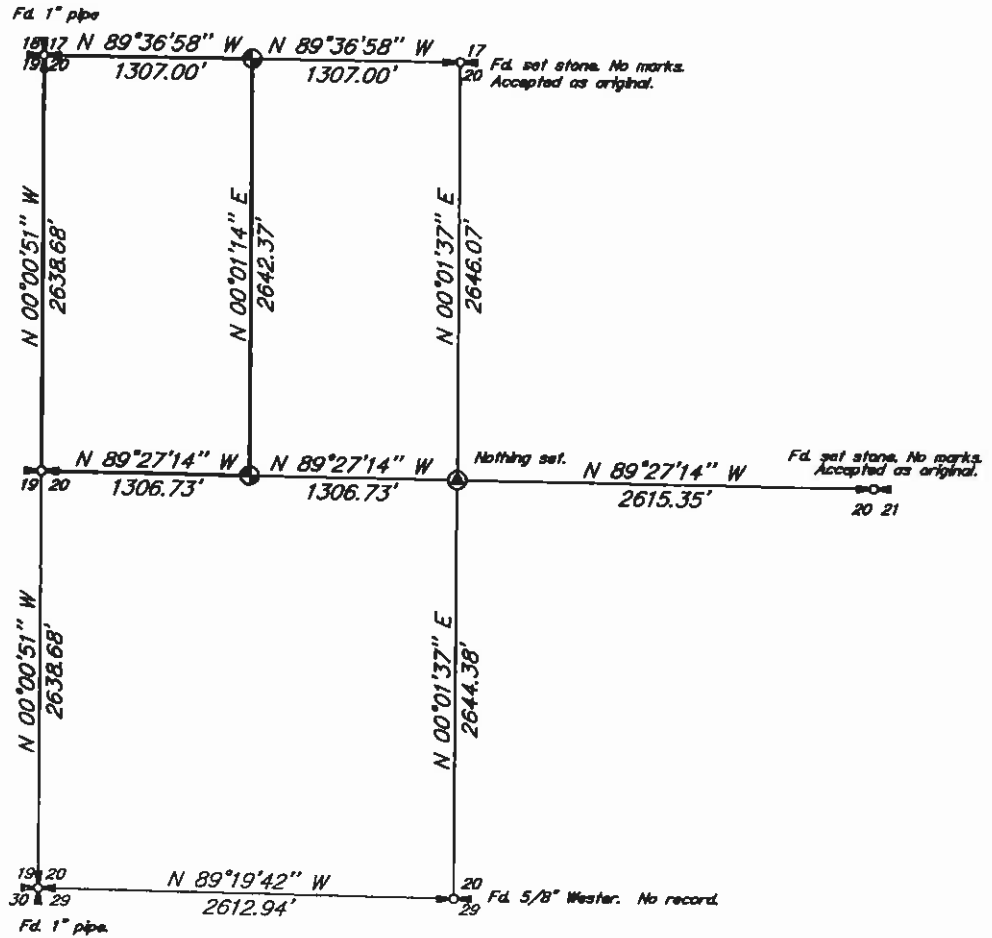
ORIGINAL: Set post, 3' long, 3" square

SUBSEQUENT: None.

PERPETUATION: Set 5/8" x 24" rebar, with plastic cap mkd.
 "Breckenridge 11706LS"



Not to Scale



See Certificate of Survey Number _____ for further information.

SKETCH OF CORNER

CERTIFICATION

I, Olaf C. EVERTANA
 certify the information shown herein is true and correct.
 Signature Ground Party Chief

I, Darren R. Breckenridge
 certify that this Corner Record correctly represents work performed by me or under my direction in compliance with the "Corner Recordation Act" (70-22-101, of sec. 102(A)).
 Signature of Surveyor & S

Date: November 14, 2004

Employer: Montana Mapping, Inc.

Office of Clerk and Recorder, County of Lake. This "corner

record" was filed for record on JUN 10 2004 at 9:12 A.M.

was noted on the cross-index plat and is assigned page No. 448663, in

book No. _____ RUTH E. HODGES by Parola D. Repask, Deputy
 Fee n/c County Official

Cross Index No. 75 T. 25 N R. 21 W PMM

Sec. 20

• corner this sheet

2-2564