

CERTIFIED CORNER RECORDATION

Corner S 1/4 SEC. 8 T. 25N R. 21W P.M.M. County LAKE

RECORD GLO: SET A POST 3 FEET LONG 3 INCHES SQ., 24 INS. INTO THE GROUND, FROM WHICH:

- A 12" PINE BEARS N32°E 231.0' SCRIBED 1/4 S BT.
- A 8" PINE BEARS S03°W 84.50' SCRIBED 1/4 S BT.

RECORD 1990: SET 5/8" x 24" REBAR WITH ORANGE CAP STAMPED GOACHER 7318S, FROM WHICH:

- WEST FORK OF DAYTON CREEK BEAR WEST 75 FEET.
- A 18" PINE BEARS S48°E 355.60'.
- SOUTH POLE OF A TWO POLE STRUCTURE FOR 230KV ELEC. TRANSMISSION LINE BEARS N03°30'E 499.40'

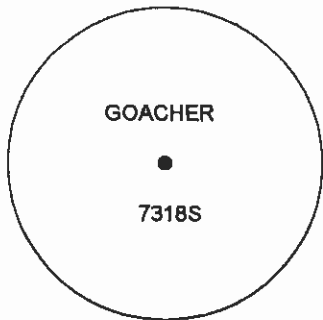
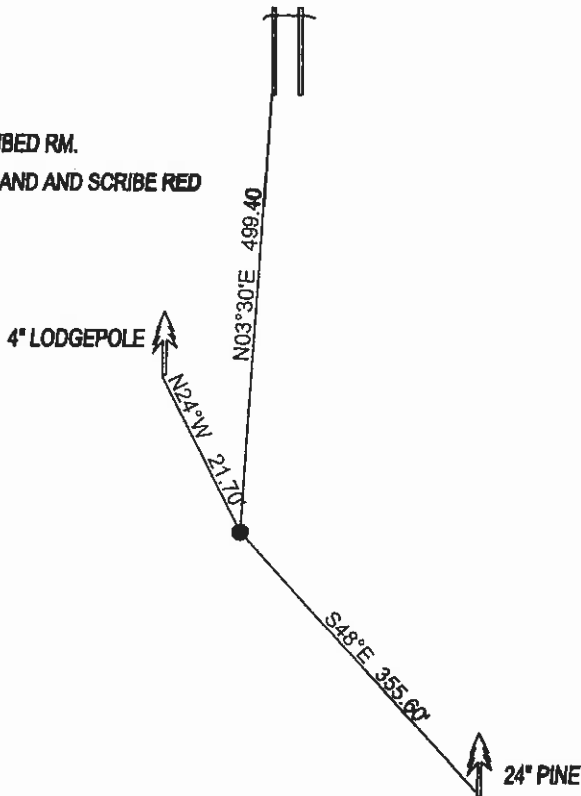
FOUND: GOACHER REBAR AND CAP, FROM WHICH:

- A 24" PINE BEARS S48°E 355.60'.
- POWER POLE BEARS N03°30'E 499.40'

NEW BT

- A 4" LODGEPOLE BEARS N24°W 21.70' SCRIBED RM.

ATTACHED BT TAGS AND PAINTED A RED 6" BAND AND SCRIBE RED



SKETCH OF CORNER

CERTIFICATION

I, DAN CROFT
certify the information shown herein is true and correct.

Signature Ground Party Chief

I, MARC J. CARSTENS
certify that this Corner Record correctly represents work performed by me or under my direction in compliance with the "Corner Recordation Act" (70-22-101, et seq., M.C.A.)

[Signature]
Signature Of Surveyor & Seal

Date: 4-2010 Reg. No. 5940 LS

Employer: CARSTENS LAND SURVEYING



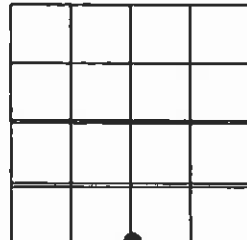
506396 CORNER Pages: 0
 STATE OF MONTANA LAKE COUNTY
 RECORDED: 04/23/2010 4:02 KOI: CORNER
 RUTH E. HODGES CLERK AND RECORDER
 FEE: \$0.00 BY: *Paula A. Holl*
 TO: LAKE COUNTY PERMANENT FILES, 106 4TH AVE E, POLSON MT

County Official

Cross Index No. 47 T. 25N R. 21W P.M.M.

Adopted July 1, 1981, Montana Board of Professional Engineers & Land Surveyors

Sec. 8



• corner this sheet

C-2801