

1. Original survey monuments found used in establishing the corner position.
2. Description of evidence found, note discrepancies in the record.
3. Description of monument and accessories set to perpetuate the corner position.
4. Sketch of corner, show all pertinent data.
5. Certification must be signed and sealed by Land Surveyor licensed in the State of Montana.
6. Fill in index information and show the corner's approximate location within the section diagram.

## CERTIFIED CORNER RECORDATION

Corner: 1/4 Corner Sections 33 & 34 T.25N R.21W P.M.M. Lake County

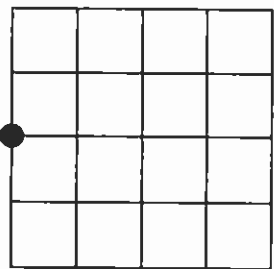
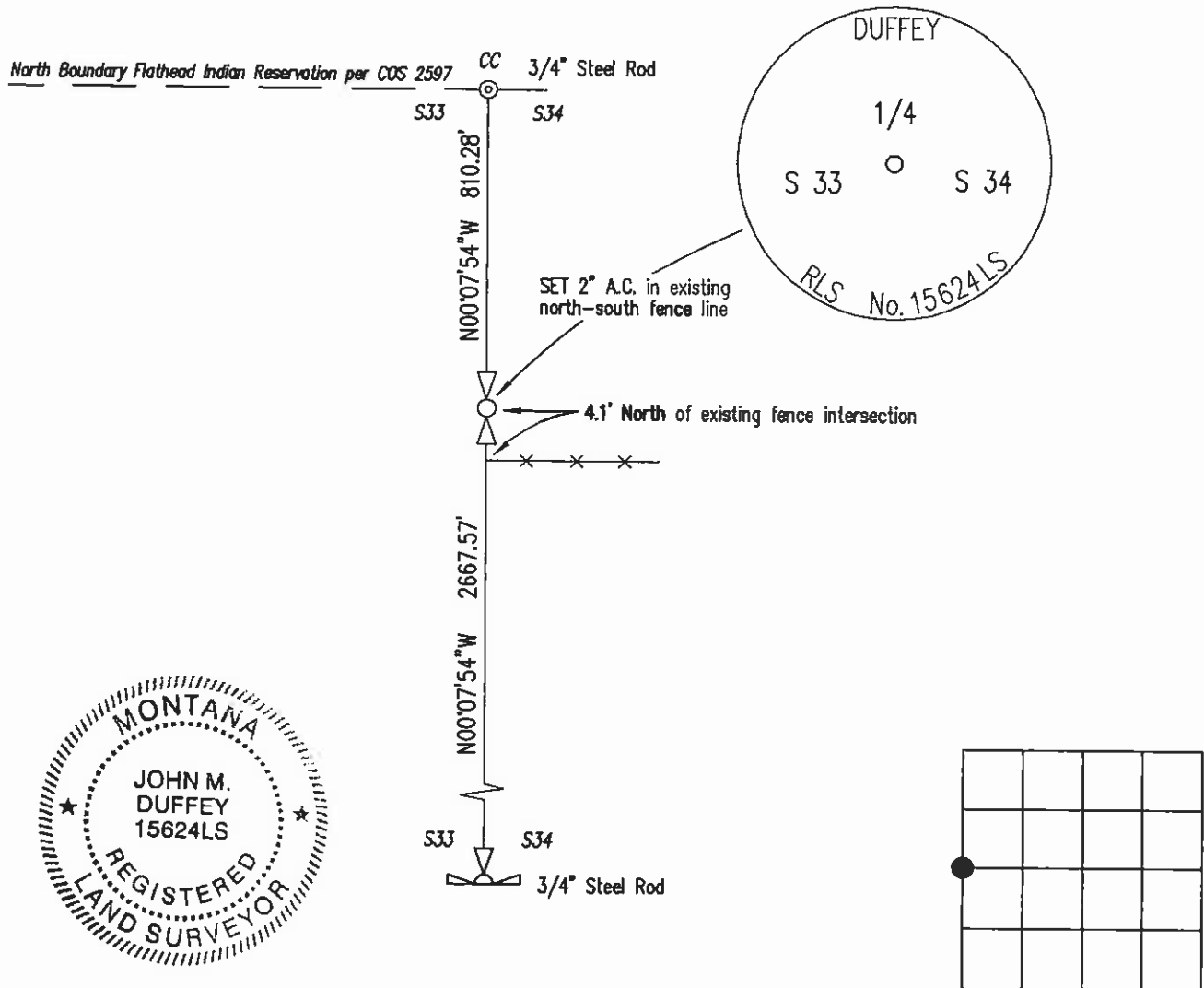
ORIGINAL RECORD: Set 14"x10"x5" trap rock, 10" in the ground.

EVIDENCE FOUND: No evidence of original stone or accessories found.

DISCUSSION: Position of 1/4 calculated and shown on COS 2597 but not set.

PERPETUATION: Using found monuments, I reset the 1/4 corner using record proportion. Set a 5/8"x24" rebar with 2 inch Aluminum Cap as shown below.

DRAWING NOT TO SCALE



SKETCH: show enough information to clearly identify the corner (use back if needed).

● Location in Sec. 34

504110 CORNER Pages: 0  
 STATE OF MONTANA LAKE COUNTY  
 RECORDED: 01/06/2010 4:12 KOI: CORNER  
 RUTH E. HODGES CLERK AND RECORDER  
 FEE: \$0.00 BY: John M. Duffey  
 TO: LAKE COUNTY PERMANENT FILES, 106 4TH AVE E, POLSON MT  
 in Book No. \_\_\_\_\_  
 and/or Doc. No. \_\_\_\_\_  
C 2788  
 County Official

Certifications

I, John M. Duffey certify that the work represented herein was faithfully performed.

\_\_\_\_\_  
 Signature of Ground Party Chief

---

John M. Duffey  
 Signature of Surveyor & Seal

Date: 1/6/2010 Lic. No. 15624LS  
 Employer: Duffey Land Surveying