

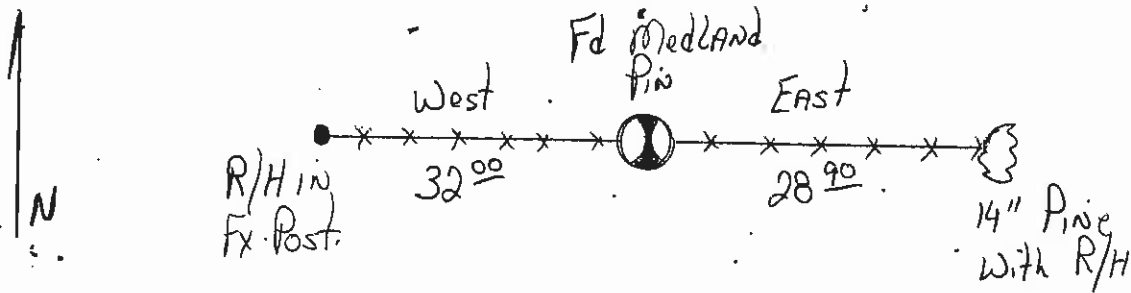
CERTIFIED LAND CORNER RECORDATION

DESCRIPTION OF CORNER EVIDENCE FOUND, AND ORIGINAL RECORD (IF KNOWN)

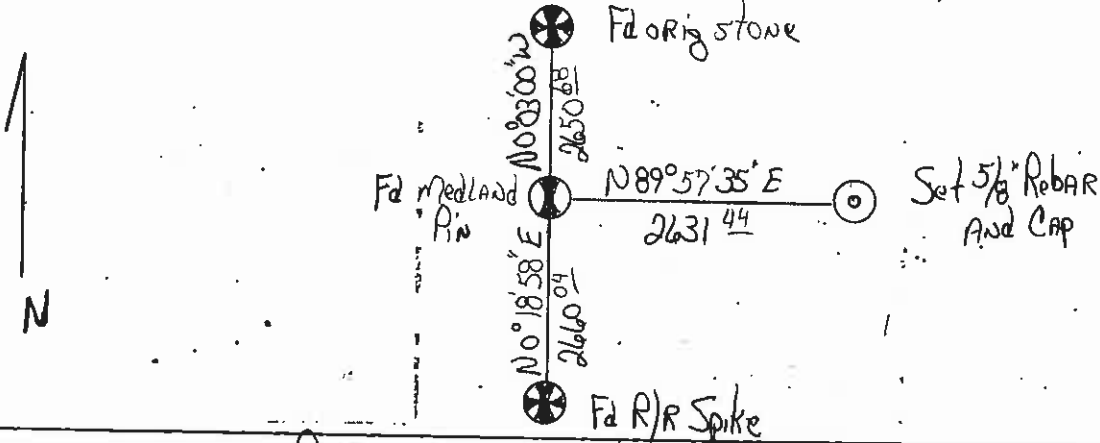
Fd Medland Pin for 1/4 Cor

DESCRIPTION OF MONUMENT AND ACCESSORIES ESTABLISHED TO PERPETUATE THE ORIGINAL LOCATION OF THIS CORNER:

Date of work: 1/79



SKETCH, WITH COURSE AND DISTANCE TO ADJACENT CORNERS IF DETERMINED IN THIS SURVEY. (MAY SKETCH OR PASTE REPRODUCTION ON REVERSE SIDE.)



Surveyor's Seal

I, R.A. Speirs, certify that the information shown herein is true and correct.

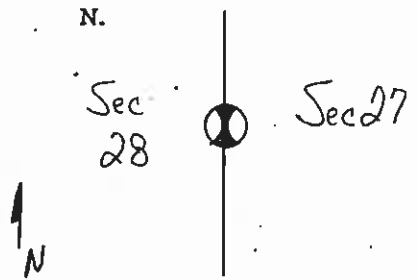
Signature of Ground Party Chief: R.A. Speirs

I, C.W. Doyle, certify that I have carefully performed or reviewed the work done on the diagrammed corner as reported on this recordation form and approve the same.

Signature of Surveyor: C.W. Doyle

Registration Number: 256-5

DIAGRAM OF CORNER:



Legend: (Monument symbol) = Corner recorded on the sheet

Clerk and Recorder, County of Lake State of Montana

Record was filed for record on the 6<sup>th</sup> day of February, 1979, at 11:05 o'clock A.M.

Page No. 246426, in book No. C-850

By: Rethanne Hartsoch Deputy County Official

ETHEL A. BARDING CLERK & RECORDER

Cross Index No. I-13 T. 25N R. 21W Mer.