

61-

394177

INSTRUCTIONS

1. Original and/or subsequent record used to evaluate the corner position.
2. Description of evidence found, note discrepancies in the record, state method of establishing lost or obliterated corners.
3. Description of monument and accessories set to perpetuate the corner position.
4. Sketch of corner, show all pertinent data which can best be shown in a sketch example, corner marking, topography lies, position of accessories, etc.
5. Certification must be signed and sealed by Land Surveyor registered in the State of Montana.
6. Fill in Cross Index & Section Diagram at bottom of sheet.

CERTIFIED CORNER RECORDATION

Corner N 1/4 Cor. Section II T. 25N. R. 22W. P.M.M. LAKE County

RECORD: from G.L.O. Field Book 3208, page 40, surveyed by Charles L. Smith in May through June 1897

Set a fir post, 3' long, 3" square, 24" in the ground marked "1/4" on south and north face, from which:

- a 12" larch bears N25°W 7 lks. (4.62')
- a 7" fir bears S32°45'W 33 lks. (21.78')

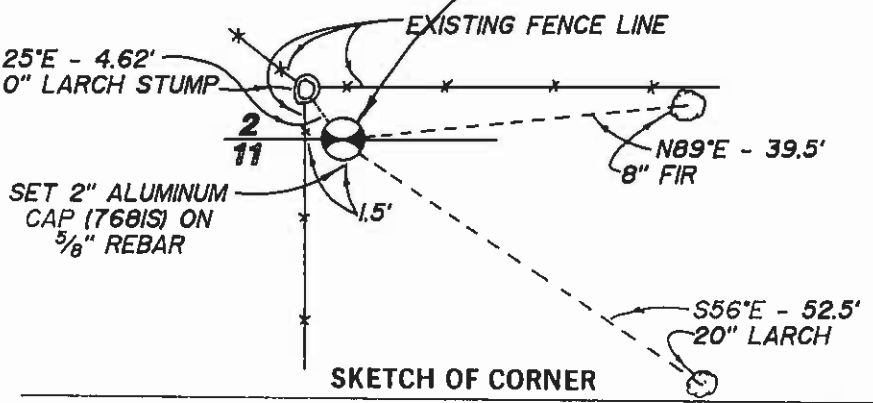
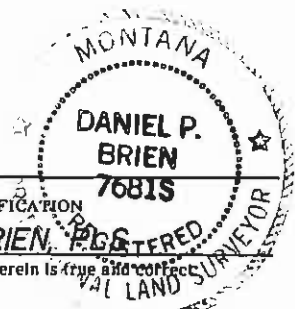
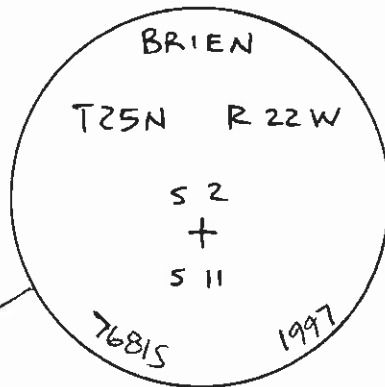
FOUND: no evidence of original fir post

-a 20" larch stump 4.5' high with old axe marks and scribing visible at corner of existing fence lines

SET: 5/8" rebar and 2" aluminum cap (7681S) at record tie to found larch stump, from which:

- a 8" fir scribed "RM" and painted blazes orange, bears N89°E 39.5', attached MARLS B.T. tag
- a 20" larch scribed "RM" and painted blazes orange, bears S56°E 52.5', attached MARLS B.T. tag

Used a SILVA hand compass (declination 18° E)



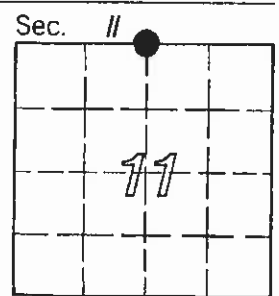
CERTIFICATION
 I, DANIEL P. BRIEN, PLS
 certify the information shown herein is true and correct.

Signature Ground Party Chief
 I, DANIEL P. BRIEN, PLS
 certify that this Corner Record correctly represents work performed by me or under my direction in compliance with the "Corner Recordation Act" (70-22-01, M.C.A.)

Signature of Surveyor & Seal
 Date: 12/16/97 Reg. No. 7681S
 Employer: HERSMAN LAND SURVEY

Office of Clerk and Recorder, County of LAKE. This "corner record" was filed for record on OCT 29 1998 9:31 A.M. was noted on the cross-index plat and is assigned page No. 394177, in book No. RUTH E. HODGES

by Ticki Rehe, Deputy
 County Official
 Cross Index No. E-19 T. 25N. R. 22W. P.M.M.



• - corner this sheet