

INSTRUCTIONS

1. Original and/or subsequent record used to evaluate the corner position.
2. Description of evidence found, note discrepancies in the record, state method of establishing lost or obliterated corners.
3. Description of monument and accessories set to perpetuate the corner position.
4. Sketch of corner, show all pertinent data which can best be shown in a sketch example, corner marking, topography ties, position of accessories, etc.
5. Certification must be signed and sealed by Land Surveyor registered in the State of Montana.
6. Fill in Cross Index & Section Diagram at bottom of sheet.

CERTIFIED CORNER RECORDATION

Corner 1/4 10/11 T. 25N R. 32W P.M.M. SANDERS County

I. ORIGINAL SURVEY, 1904: SET STONE AND TWO BEARING TREES.

THE 1/4 SEC. COR. OF SECS. 10 AND 11, MONUMENTED WITH A REBAR, 24 INS. LONG, 3/4 IN. DIAM., FIRMLY SET 20 INS. IN THE GROUND, ESTABLISHED BY J.W. NINNEMAN, MONTANA REGISTERED LAND SURVEYOR, NO. 53465, AND ACCEPTED AS A CAREFUL AND FAITHFUL PERPETUATION OF THE ORIGINAL COR.

AT THE CORNER POINT

SET AN ALUMINUM POST, 30 INS. LONG, 2 1/2 INS. DIAM., 20 INS. IN THE GROUND WITH ALUMINUM CAP, MKD. AS SHOWN BELOW, FROM WHICH:

A PONDEROSA PINE, 8 INS. DIAM., BEARS S. 46° E., 62 LKS. DIST., MKD. 1/4 S11 BT.

A PONDEROSA PINE, 8 INS. DIAM., BEARS N. 60° W., 16 LKS. DIST., MKD. 1/4 S10 BT.

BURY THE REBAR INSIDE THE ALUMINUM POST.

II. FOUND 3/4 IN. ALUMINUM MON. FLUSH WITH GROUND, FROM WHICH:

A PINE, 14 INS. DIAM., BEARS N. 58° W., 9.90 FT., SCRIBE GROWN OVER.

A PINE, 13 INS. DIAM., BEARS S. 39° E., 40.50 FT., SCRIBE GROWN OVER.

III. MON. IS IN GOOD CONDITION.

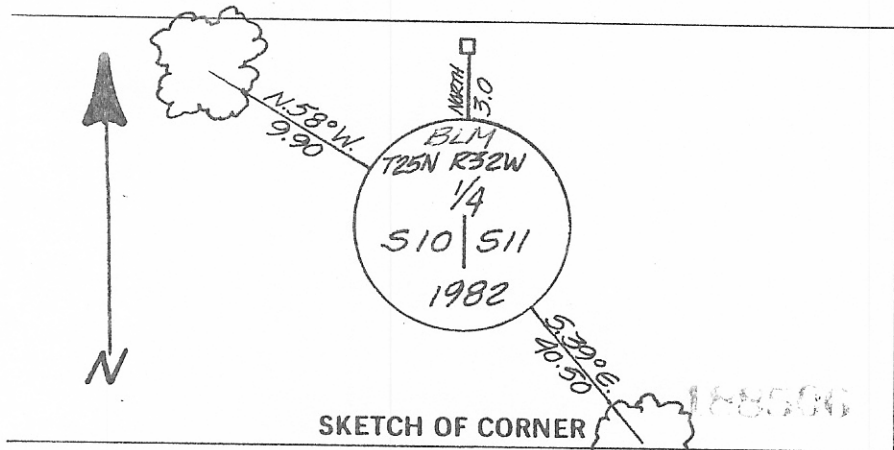
POSTED BT'S WITH 54-3 AND 54-9 TAGS.

PAINTED SCRIBES, BLAZES AND BANDS ON BT'S.

SET POST WITH LSM STICKER 3.0 FT. NORTH OF MON.

I-A. MONUMENT AND ACCESSORIES DESCRIBED IN ITEM I, WERE ESTABLISHED BY THE BUREAU OF LAND MANAGEMENT IN 1977.

168



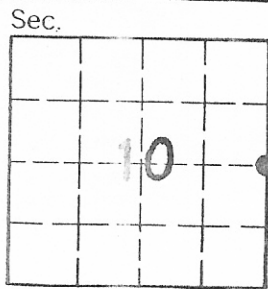
SKETCH OF CORNER

I. DAVID HIGGINS REGISTERED PROFESSIONAL SURVEYOR
 certify the information shown here is true and correct.
David Higgins
 Signature of Party Chief

I. CARL R. McMULLEN
 certify that this Corner Record correctly represents work performed by me or under my direction in compliance with the "Corner Recordation Act" (70-22-101 et seq., M.C.A.)
Carl R. McMullen
 Signature of Surveyor & Seal

Date: 6-6-88 Reg. No. 46595
 Employer: TRI-STATE LAND SURVEYING

Office of Clerk and Recorder, County of Sanders. This "corner record" was filed for record on June 22 1988 at 11:30 A.M. was noted on the cross-index plat and is assigned page No. 168, in book No. 3 Nope
David Vaughn County Official



• - corner this sheet

Cross Index No. G-17 T. 25N R. 32W P.M.M.