

INSTRUCTIONS

1. Original and/or subsequent record used to evaluate the corner position.
2. Description of evidence found, note discrepancies in the record, state method of establishing lost or obliterated corners.
3. Description of monument and accessories set to perpetuate the corner position.
4. Sketch of corner, show all pertinent data which can best be shown in a sketch example, corner marking, topography ties, position of accessories, etc.
5. Certification must be signed and sealed by Land Surveyor registered in the State of Montana.
6. Fill in Cross Index & Section Diagram at bottom of sheet.

CERTIFIED CORNER RECORDATION

Corner 1/4 14/13 T. 25N R. 32W P.M.M. SANDERS County
 I. ORIGINAL SURVEY, 1904: SET STONE AND TWO BEARING TREES.

THE 1/4 SEC. COR. OF SECS. 13 AND 14, DETERMINED AT THE INTERSECTION OF THE PROJECTION OF A FENCE EXTENDING S., WITH THE CENTERLINE OF AN OLD COUNTY ROAD BEARING E. AND W., AND ACCEPTED AS THE BEST AVAILABLE EVIDENCE OF THE POSITION OF THE ORIGINAL COR. AT THE COR. POINT

SET AN ALUMINUM POST, 30 INS. LONG, 2 1/2 INS. DIAM., 24 INS. IN THE GROUND, WITH ALUMINUM CAP, MKD. AS SHOWN BELOW, FROM WHICH:

A PONDEROSA PINE, 7 INS. DIAM., BEARS S. 78° E., 38 LKS. DIST., MKD. 1/4 S13 BT.

A FIR, 17 INS. DIAM., BEARS S. 57° W., 37 LKS. DIST., MKD. 1/4 S14 BT.

RAISE A COLLAR OF STONE, 3 FT. DIAM., AROUND THE ALUMINUM POST.

II. FOUND 3/4 IN. ALUMINUM MON., FROM WHICH:

A PINE, 8 INS. DIAM., BEARS S. 76° E., 24.70 FT.; VISIBLE SCRIBING

A FIR, 18 INS. DIAM., BEARS S. 58° W., 24.50 FT.; VISIBLE SCRIBING

III. MON. IS IN GOOD CONDITION.

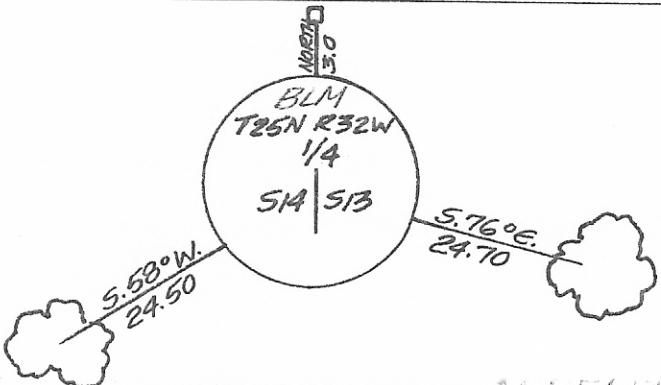
POSTED BT'S WITH 54-3 AND 54-9 TAGS.

PAINTED SCRIBES, BLAZES, AND RED BANDS ON BT'S.

SET POST WITH LSM STICKER 3.0 FT. NORTH OF MON.

I-A. MONUMENT AND ACCESSORIES DESCRIBED IN ITEM I, WERE ESTABLISHED BY THE BUREAU OF LAND MANAGEMENT IN 1977.

169



SKETCH OF CORNER



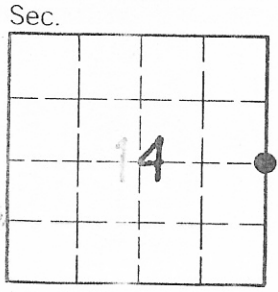
CERTIFICATION
 I, DAVID HIGGINSON
 certify the information shown herein is true and correct.
 Signature Ground Party Chief

I, CARL R. McMULLEN
 certify that this Corner Record correctly represents work performed by me or under my direction in compliance with the "Corner Recordation Act" (10-22-101, et seq., M.C.A.)
 Signature of Surveyor & Seal

Date: 6-6-88 Reg. No. 4659S

Employer: TRI-STATE LAND SURVEYING

Office of Clerk and Recorder, County of Deer. This "corner record" was filed for record on June 22 1988 at 11:31 A.M. was noted on the cross-index plat and is assigned page No. 169, in book No. 3
None



• - corner this sheet