

INSTRUCTIONS

1. Original and/or subsequent record used to evaluate the corner position.
2. Description of evidence found, note discrepancies in the record, state method of establishing lost or obliterated corners.
3. Description of monument and accessories set to perpetuate the corner position.
4. Sketch of corner, show all pertinent data which can best be shown in a sketch example, corner marking, topography ties, position of accessories, etc.
5. Certification must be signed and sealed by Land Surveyor registered in the State of Montana.
6. Fill in Cross Index & Section Diagram at bottom of sheet.

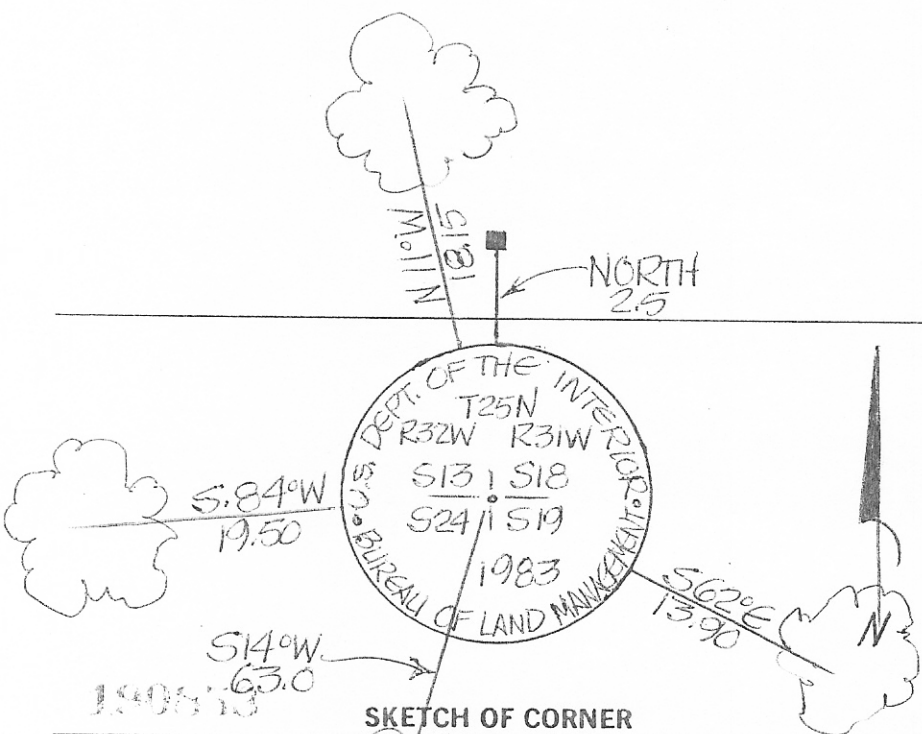
CERTIFIED CORNER RECORDATION

Corner S.E. SEC. COR. - SEC. 13 T. 25N R. 32W P.M.M. SANDERS County

I. ORIGINAL G.L.O. SURVEY BY CHARLES H. ALBEE & WILLIAM K. TRIPPET, 1904.  
 RESURVEY BY ERNEST PARKER & ROBERT L. KYLE, 1934.  
 B.L.M. DEPENDENT RESURVEY, 1983:  
 SET AN ALUMINUM POST 30 INS. LONG, 2 1/2 INS. DIAM., 20 INS. IN THE GROUND, WITH ALUMINUM CAP, MKD. AS SHOWN BELOW, FROM WHICH:  
 A PINE, 18 INS. DIAM., BEARS N. 70° E., 21 LKS. DIST., MKD. T25N R31W S18 BT.  
 A PINE, 12 INS. DIAM., BEARS S. 12° W., 95 LKS. DIST., MKD. T25N R32W S24 BT.  
 A FIR, 12 INS. DIAM., BEARS S. 82° W., 30 LKS. DIST., MKD. T25N R32W S24 BT.  
 A FIR, 18 INS. DIAM., BEARS N. 11° W., 28 LKS. DIST., MKD. T25N R32W S13 BT.  
 RAISE A COLLAR OF STONE, 2 FT. DIAM., AROUND THE ALUMINUM POST.

II. FOUND A 3/4 IN. ALUM. MON. IN GOOD CONDITION, IN ROCK CAVERN, FROM WHICH:  
 A 22 IN. PINE BEARS S. 62° E., 13.90 FT., W/VISIBLE SCRIBE  
 A 16 IN. PINE BEARS S. 14° W., 63.00 FT., W/VISIBLE SCRIBE  
 A 13 IN. FIR BEARS S. 84° W., 19.50 FT., W/VISIBLE SCRIBE  
 A 19 IN. FIR BEARS N. 11° W., 18.15 FT., W/VISIBLE SCRIBE

III. PAINTED BLAZES, BANDS & SCRIBES ON BT'S.  
 PLOCD "LAND SURVEY MONUMENT" SIGNS & "BEARING TREE" TAGS ON BT'S.  
 SET STEEL POST WITH "LAND SURVEY MONUMENT" STICKER 2.50 FT. NORTH OF MON.



MONTANA  
 CERTIFICATION  
 I, ROGER MULLER  
 certify the information shown herein is true and correct.  
Roger Muller  
 Signature Ground Party  
 I, CARL W. STEVENSON  
 certify that this Corner Record correctly represents work performed by me or under my direction in compliance with the "Corner Recordation Act" (70-22-101, et seq., M.C.A.)  
Carl W. Stevenson  
 Signature of Surveyor & Seal  
 Date: 12-3-88 Reg. No. 1546575  
 Employer: TRI-STATE LAND SURVEYING

Office of Clerk and Recorder, County of Sanders. This "corner record" was filed for record on Dec 9 1988 at 2:06 o'clock P.M. was noted on the cross-index plat and is assigned page No. 242, in book No. 3

Lynne Thraut  
 County Official

Sec.

	13	

VOL. 31 242

Cross Index No. N-25 T. 25N R. 32W P.M.M.

• - corner this sheet