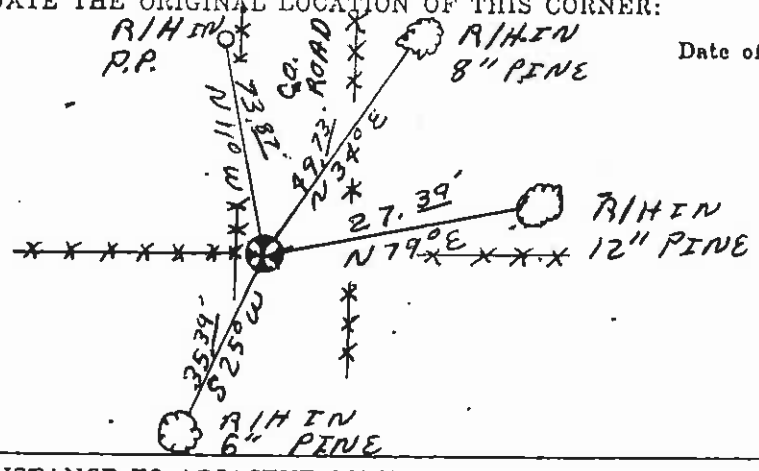


CERTIFIED LAND CORNER RECORDATION

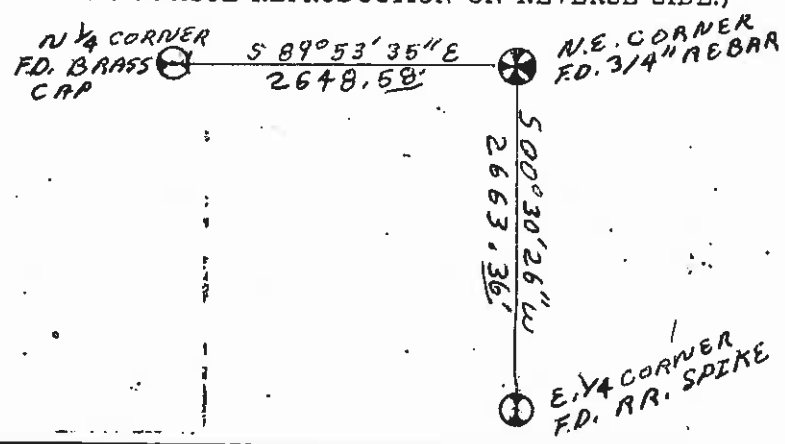
DESCRIPTION OF CORNER EVIDENCE FOUND, AND ORIGINAL RECORD (IF KNOWN)  
Fd. 3/4" REBAR FOR NORTHEAST SECTION CORNER

DESCRIPTION OF MONUMENT AND ACCESSORIES ESTABLISHED TO PERPETUATE THE ORIGINAL LOCATION OF THIS CORNER:

Date of work: 2/27/79



SKETCH, WITH COURSE AND DISTANCE TO ADJACENT CORNERS IF DETERMINED IN THIS SURVEY. (MAY SKETCH OR PASTE REPRODUCTION ON REVERSE SIDE.)

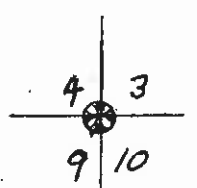


Surveyor's Seal

I, Row Speirs  
certify that the information shown herein is true and correct.  
R. Speirs  
Signature of Ground Party Chief

DIAGRAM OF CORNER:

N.



I, C.W. Doyle  
certify that I have carefully performed or reviewed the work done on the diagrammed corner as reported on this recordation form and approve the same.  
C. W. Doyle  
Signature of Surveyor

⊗ = Corner recorded on the sheet

2516-5  
Registration Number

Clerk and Recorder, County of Lake, State of Montana

Record was filed for record on the 4th day of APRIL 1979 at 3:14 o'clock P. M.  
Ethel M. Harding, Lake County Clerk & Recorder  
By: Blaine R. Wilard, Deputy County Official

No. 247467, in book No. C-862

Cross Index No. E-13 T. 26 N. R. 19 W. Mer.