

21-

379406

# CERTIFIED CORNER RECORDATION

Corner 1/4-1/12 T. 26 N. R. 19 W. P.M.M. Lake County

GLO Record, Book 2718 Page 10

"Set a limestone 16x8x6 ins. 11 ins. in the ground for 1/4 sec. cor. marked 1/4 on N. face from which

A tamarack 14 ins. diam. bears N.2°15'E. 52 lks. distant marked 1-4 S. B. T.

A fir 14 ins. diam. bears S.28°15'E. 29 lks. distant marked 1-4 S. B. T."

1969 Shaw Corner Record

"I find stone as described. I find remnants of Tamarack stump...I clear brush away and paint stone orange. I scribe Bearing Trees as per sketch."

Bearing Trees indicated on sketch are as follows:

A 5" Larch bears S. 43° E., 34.2' dist.

A 6" Fir bears S. 6° W., 27.1' dist.

A 5" Fir bears N. 23° W., 13.8' dist.

1990 Brien Certificate of Survey No. 4435

"Set 5/8" Rebar & Cap (7681 S)"

Evidence Found this Survey

Found 18" x 12" x 6" stone with "1/4" chiseled on north face.

A 1 1/4" Brien yellow plastic cap on a 5/8" X 24" rebar bears North, 0.22' dist.

1996 Remonumentation by S. R. Smith

At the position marked by the stone, set an aluminum pipe 2 1/2" diameter, 30" long with 3 1/4" diameter aluminum cap, marked as shown below. Buried the stone on the north side of the monument, upside down with "1/4" facing south and placed Brien rebar inside monument. Surrounded monument with stone collar.

The remains of Shaw's bearing trees marked with my reference are as follows:

A 1 1/4" diameter yellow plastic cap marked "SMITH 4740S", set in a 9" diameter douglas fir, bears N. 23° W., 14.60' dist.

A 1 1/4" diameter yellow plastic cap marked "SMITH 4740S", set in a 9" diameter larch, bears S. 43° E., 34.23' dist.

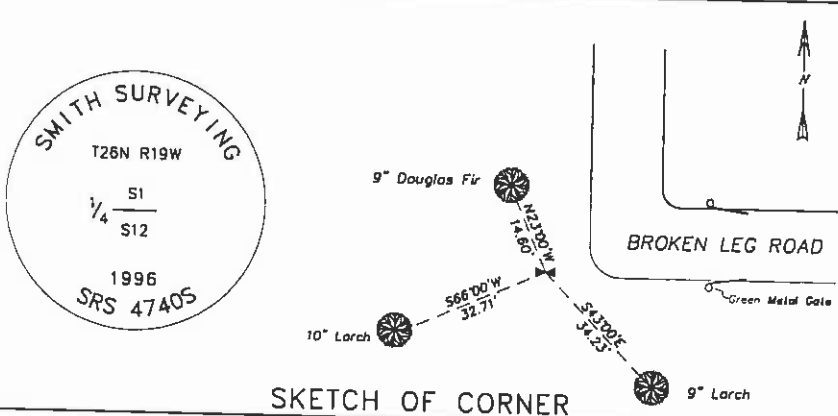
New bearing tree established this survey:

A 1 1/4" diameter yellow plastic cap marked "SMITH 4740S", set in a 10" diameter larch, scribed "1/4 S12 BT", bears S. 66° W., 32.71' dist.

Bearings listed in remonumentation section were measured with a hand compass, declination 17 1/2° East.

All new bearing trees marked with a snow blaze, notch at base of scribing and Bearing Tree sign. Bearings and distances are to center of tree.

Refer to the Certificate of Survey filed in conjunction with this corner recordation for ties to adjacent section controlling corners in the area.



CERTIFICATION

I, Thomas E. Stark, certify the information shown here is true and correct.

Thomas E. Stark  
Signature Ordnance Party Chief

I, S. R. Smith, certify that this Corner Record correctly represents work performed by me or under my direction in compliance with the "Corner Recordation Act" (70-22-103, et seq., M.S.A.)

S. R. Smith  
Signature of Surveyor & Seal

Date: 12/31/96 Reg. No. 4740S  
Employer: Smith Surveying

Office of Clerk and Recorder, County of Lake. This "corner

record" was filed for record on JAN 17 1997 at 11:06 AM

was noted on the cross-index plat and is

379406

RIITH E. HODGES

County Official

C-2100

Judy M. Jones

Cross Index No. E-23 T. 26 N. R. 19 W. PMM

Adopted July 1, 1981, Montana Board of Professional Engineers & Land Surveyors

Sec. 12

|  |  |  |  |
|--|--|--|--|
|  |  |  |  |
|  |  |  |  |
|  |  |  |  |
|  |  |  |  |

corner this sheet