

INSTRUCTIONS

1. Original and/or subsequent record used to evaluate the corner position.
2. Description of evidence found, note discrepancies in the record, state method of establishing lost or obliterated corners.
3. Description of monument and accessories set to perpetuate the corner position.
4. Sketch of corner, show all pertinent data which can best be shown in a sketch example, corner marking, topography ties, position of accessories, etc.
5. Certification must be signed and sealed by Land Surveyor registered in the State of Montana.
6. Fill in Cross Index & Section Diagram at bottom of sheet.

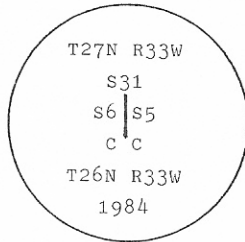
CERTIFIED CORNER RECORDATION

Corner CC OF Secs. 5 and 6 T. 26 N. R. 33 W. P.M.M. Sanders County

I. 1905 original G.L.O. record by E. Page and N. Orr: Set a stone and two bearing trees.

1984 B.L.M. dependent resurvey record: Point for the closing cor. of secs. 5 and 6.

Set an aluminum post, 30 ins. long, 2 1/2 ins. diam., 22 ins. in the ground, with aluminum cap mkd.



From which

- A fir, 6 ins. diam., bears S36° E, 37 lks. (24.42 ft.) dist., mkd. T26N R33W S5 CC BT.
- A fir, 6 ins. diam., bears S61° W, 39 lks. (25.74 ft.) dist., mkd. T26N R33W S6 CC BT.

The original closing cor., monumented with a slate stone, 5x5x6 ins. above the ground, mkd. with 5 notches of the E. and 1 notch on the W. edges and CC on the S. face. Add the mks. AM on the stone.

From which a bearing tree of unknown origin:

- A fir, 6 ins. diam., bears S2° W, 26 lks. (17.16 ft.) dist., mkd. RM.

II. Found a 2 1/2 ins. diam. alum. pipe, 8 ins. above the ground, with BLM alum. cap mkd. as shown.

From which:

- A dead fir, 6 ins. diam., bears S36° E, 24.46 ft. dist., mkd. T26N R33W S5 CC BT.
- A fir, 7 ins. diam., bears S68° W, 25.8 ft. dist., healed face.
- A fir, 9 ins. diam., bears S6° W, 9.7 ft. dist., mkd. RM.

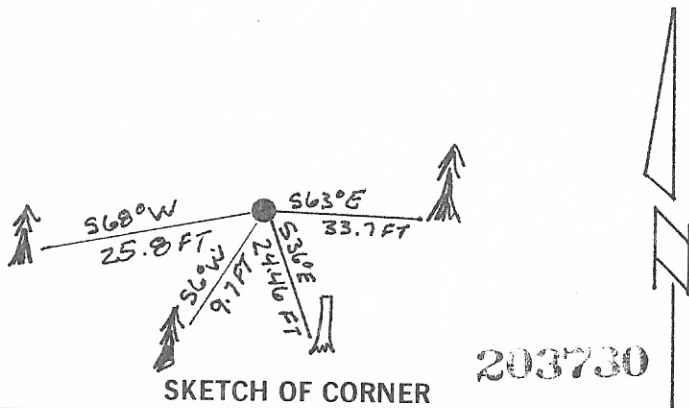
Original stone, 5x5x6 ins. above ground, CC on south face, AM on west face, 5 notches on east and 1 notch on west faces. Stone bears N4° E, 7.1 ft. dist. from alum. pipe.

III. Established one new bearing tree:

- A cedar, 9 ins. diam., bears S63° E, 33.7 ft. dist., mkd. T26N R33W S5 CC BT.

Painted red bands around the bearing trees and attached Land Survey Monument and Bearing Tree signs. Set a 6 ft. galvanized steel guard post with Land Survey Marker and Property Boundary decals, South, 3 ft. Magnetic Declination: 20° East.

3 763



SKETCH OF CORNER

CERTIFICATION

I, Thomas M. Hommel
 certify the information shown herein is true and correct.
Thomas M Hommel
 Signature Ground Party Chief

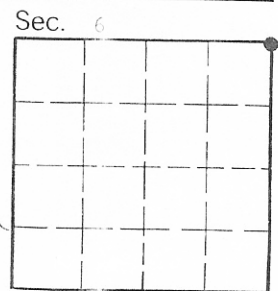
I, Alvah F. Hughes
 certify that this Corner Record correctly represents work performed
 by me or under my direction in compliance with the "Corner
 Recordation Act" (70-22-001, et seq., M.C.A.)
Alvah F. Hughes
 Signature of Surveyor & Seal

Date: 2/23/92 Reg. No. 7322 LS

Employer: U.S. FOREST SERVICE

Office of Clerk and Recorder, County of Sanders. This "corner record" was filed for record on May 20, 1992 at 12:37 pm was noted on the cross-index plat and is assigned page No. 763, in book No. 3 *no fee*

Dixie Vaughn AK Rec By Brenda Fisher dep
 County Official



A-5 Cross Index No. T. 26 N R. 33 W P.M.M.

• - corner this sheet