

**INSTRUCTIONS**

1. Original and/or subsequent record used to evaluate the corner position.
2. Description of evidence found, note discrepancies in the record, state method of establishing lost or obliterated corners.
3. Description of monument and accessories set to perpetuate the corner position.
4. Sketch of corner, show all pertinent data which can best be shown in a sketch example, corner marking, topography ties, position of accessories, etc.
5. Certification must be signed and sealed by Land Surveyor registered in the State of Montana.
6. Fill in Cross Index & Section Diagram at bottom of sheet.

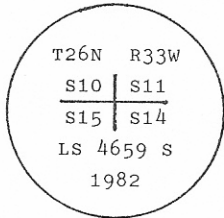
**CERTIFIED CORNER RECORDATION**

Corner S.E. of Sec. 10 T. 26 N. R. 33 W. P.M.M. Sanders County

I. 1905 G.L.O. original record by E. R. PAGE et al: Set a larch post and 4 bearing trees.

1982 corner perpetuation by C. R. McMILLEN: Set an aluminum post with cap and is accepted as a careful and faithful perpetuation of the position of the original corner.

1982 B.L.M. resurvey record by R. W. WILSON: The cor. of secs. 10, 11, 14, & 15, monumented with an aluminum post, 2 1/2 ins. diam., projecting 4 ins. above the ground, with aluminum cap marked:



from which the original bearing trees:

- A stump hole, bears N71° E, 14 lks. dist., with a rotted log lying alongside.
- A larch stump, 30 ins. diam., bears S72° E, 40 lks. dist., no visible marks.
- A pine snag, 10 ins. diam., bears S 13 1/2° W, 20 lks. dist., mkd. T26N R33W S15 BT.
- A pine snag, 12 ins. diam., bears N 10 1/2° W, 49 lks. dist., mkd. T26N R33W S10 BT.

Established four new bearing trees.

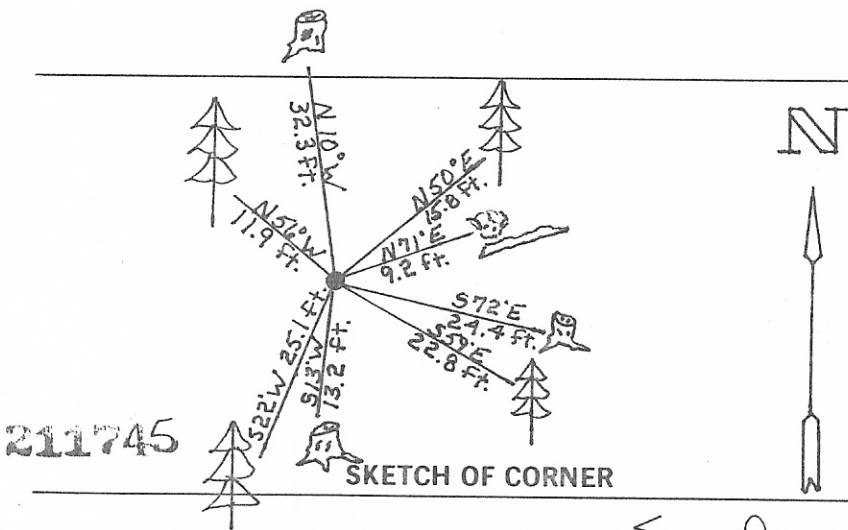
II. Found a 2 1/2 in. diam. aluminum pipe, 6 ins. above the ground, firmly set, with a 3 1/2 in. aluminum cap mkd. as shown above, from which:

- A stump hole, bears N71° E, 9.2 ft. (13.9 lks.) dist., rotted log alongside, no visible marks.
- A larch stump, 30 ins. diam., bears S72° E, 24.4 ft. (36.9 lks.) dist., no visible marks.
- A pine stump, 10 ins. diam., bears S13° W, 13.2 ft. (20.0 lks.) dist., visible scribe marks.
- A pine stump, 12 ins. diam., bears N10° W, 32.3 ft. (48.9 lks.) dist., "R33W BT" visible.
- A cedar, 11 ins. diam., bears N50° E, 15.8 ft. (23.9 lks.) dist., mkd. T26N R33W S11 BT.
- A pine, 10 ins. diam., bears S59° E, 22.8 ft. (34.5 lks.) dist., "T26N R....14" visible.
- A hemlock, 8 ins. diam., bears S22° W, 25.1 ft. (38.0 lks.) dist., "6N 33W" visible.
- A hemlock, 11 ins. diam., bears N56° W, 11.9 ft. (18.0 lks.) dist., mkd. T26N R33W S10 BT.

III. Painted a red band around bearing trees and attached Land Survey Monument and Bearing Tree signs.

Set a 6 ft. galvanized steel guard post with Land Survey Marker and Property Boundary decals, SOUTH, 2 feet.

Magnetic Declination: 20° East.



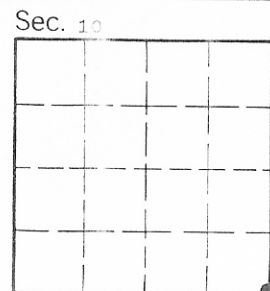
**CERTIFICATION**

I. Thomas M. Hommel  
 certify the information shown herein is true and correct.  
Thomas M. Hommel  
 Signature Ground Party Chief

I. Alvah F. Hughes  
 certify that this Corner Record correctly represents work performed by me or under my direction in compliance with the "Corner Recordation Act" (70-22-101, et seq., M.C.A.)  
Alvah F. Hughes  
 Signature of Surveyor

Date: 1/5/94 Reg. No. 7322LS  
 Employer: U.S. FOREST SERVICE

Office of Clerk and Recorder, County of Sanders. This "corner record" was filed for record on January 27, 1994 at 2:11 pm was noted on the cross-index plat and is assigned page No. 4 21, in book No. \_\_\_\_\_  
Tillie Wellston by Roni A. Frank  
 County Official Dep.



Cross Index No. J-17 T. 26N R. 33W P.M.M. • - corner this sheet