

CERTIFIED CORNER RECORDATION

1/4 Sec. Cor.

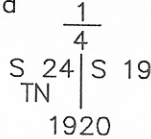
Corner of Secs. S24 | S19 T. 26N. R. 33 W. P.M.M. SANDERS County

I. Record:

1904 Original G.L.O. record by Chas. H. Albee & William K. Trippet: "40.00 chs. Set a granite stone, 14 x 8 x 8 ins., 9 ins. in the ground, for 1/4 sec. cor., marked 1/4 on W. face; from which

- A cottonwood, 6 ins. dia., bears S.6°45'E., 180 lks. dist., mkd. 1/4 S 19 B T.
- A cottonwood, 6 ins. dia., bears S.15°45'W., 104 lks. dist., mkd. 1/4 S 24 B T."

1920 Retracement & Subdivision of Sec. 24 and Original G.L.O. Survey of the Townsite of Noxon, record by Guy H. Richardson: "The 1/4 cor. of secs. 19 and 24 on the E. bdy. of T. 26 N., R. 33W., is a sandstone, 8 x 8 x 6 ins. above ground, marked as described by the surveyor general, but bearing trees destroyed. Alongside of stone set an iron post, 3 ft. long, 2 ins. diam., 42 ins. in the ground, for 1/4 cor. of secs. 19 and 24 and NE. cor. of Townsite Noxon, with brass cap marked

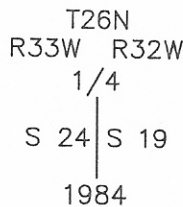


from which

- A cottonwood, 12 ins. diam., bears N. 6 1/2° E., 196 lks. dist., marked 1/4 S 19 B T.
 - A cottonwood, 12 ins. diam., bears S. 18° E., 104 lks. dist., marked 1/4 S 19 B T.
- No tree available in Sec. 24. Iron post set below ground owing to close proximity to railroad tracks."

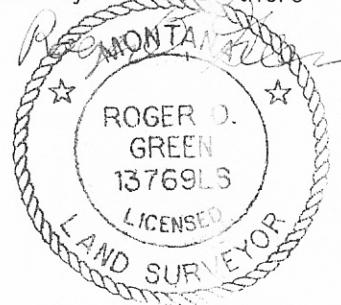
1984 B.L.M. Dependent Resurvey Sec. 24 & Noxon Townsite by R. Wayne Wilson & Harry M. Dietz: "9.98 chains. Point for the 1/4 sec. cor. of secs. 19 and 24, identical with the NE. cor. of the Noxon Townsite, at proportionate measurement, by irregular bdy. method, there is no remaining evidence of the original cor.

Set an aluminum post, 30 ins. long, 2 1/2 ins. diam., 12 ins. below the surface of the ground, with aluminum cap mkd.

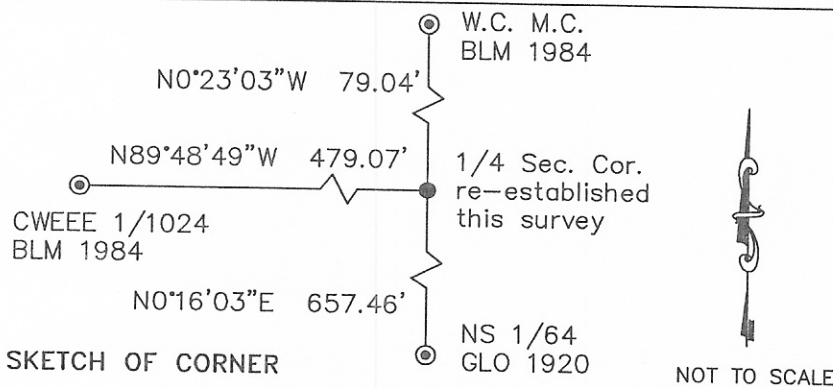


Cor. is situated on the south edge of a landing strip."

U.S. Forest Service, Supervisors Office, 1101 Hwy. 2 West, Libby, MT 59923 (406) 293-6211



Continued on Page 2



CERTIFICATION

I, Steven A. Boyer 9750LS
certify the information shown herein is true and correct.

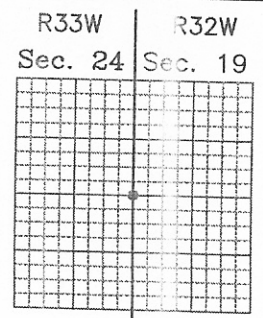
Steven A. Boyer
Signature Ground Party Chief

I, Roger O. Green
certify that this Corner Record correctly represents work performed by me or under my direction in compliance with the "Corner Recordation Act" (70-22-101, et seq., M.C.A.)

Roger O. Green
Signature of Surveyor & Seal

Date: 07/14/2003 Reg. No. 13769LS
Employer: U. S. Forest Service

253962 BOOK: 5 CORNER REC PAGE: 15 Pages: 2
STATE OF MONTANA SANDERS COUNTY
RECORDED: 01/09/2004 12:48 KOI: COR RECORD
PAT INGRAHAM CLERK AND RECORDER
FEE: \$0.00 BY: _____
TO: UNITED STATES FOREST SERVICE
County Official



Cross Index No. P-25 T26N., R33W., P.M., MT
Adopted July 1, 1981, Montana Board of Professional Engineers & Land Surveyors

CERTIFIED CORNER RECORDATION

1/4 Sec. Cor.

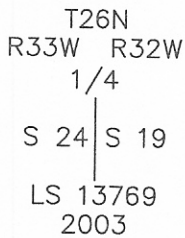
Corner of Secs. S24 | S19 T. 26N. R. 33 W. P.M.M. SANDERS County

Continued from Page 1

II. Found: No evidence of the B.L.M. & G.L.O. monuments & bearing trees was found. Blackfoot Communications provided assistance in our search for the record monuments, they have a buried cable under the corner location (and probably destroyed it/them during their installation).

III. Established: Point for the 1/4 sec. cor. of secs. 19 and 24, identical with the NE. cor. of the Noxon Townsite, at proportionate measurement, by irregular boundary method; there is no remaining evidence of the original or re-established corners. The controlling corners are the NS 1/64 sec. cor. as established by the GLO in 1920 and the witness corner to the meander corner as established by the BLM in 1984. See Certificate of Survey filed be me for this area.

Set an aluminum post, 30 ins. long, 2 1/2 ins. diam., 24 ins. below the surface of the ground, with aluminum cap marked:

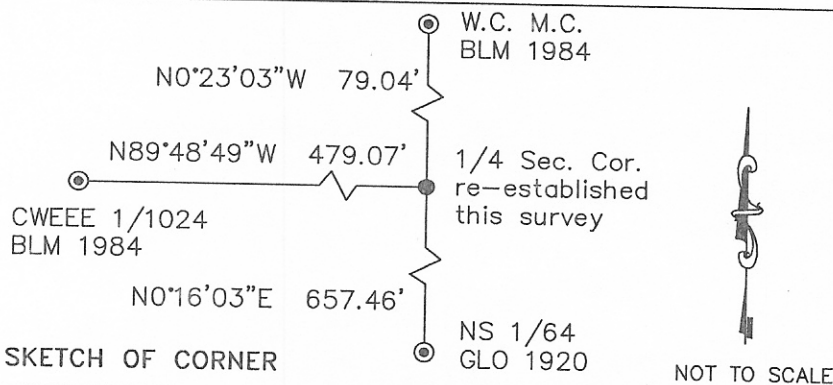
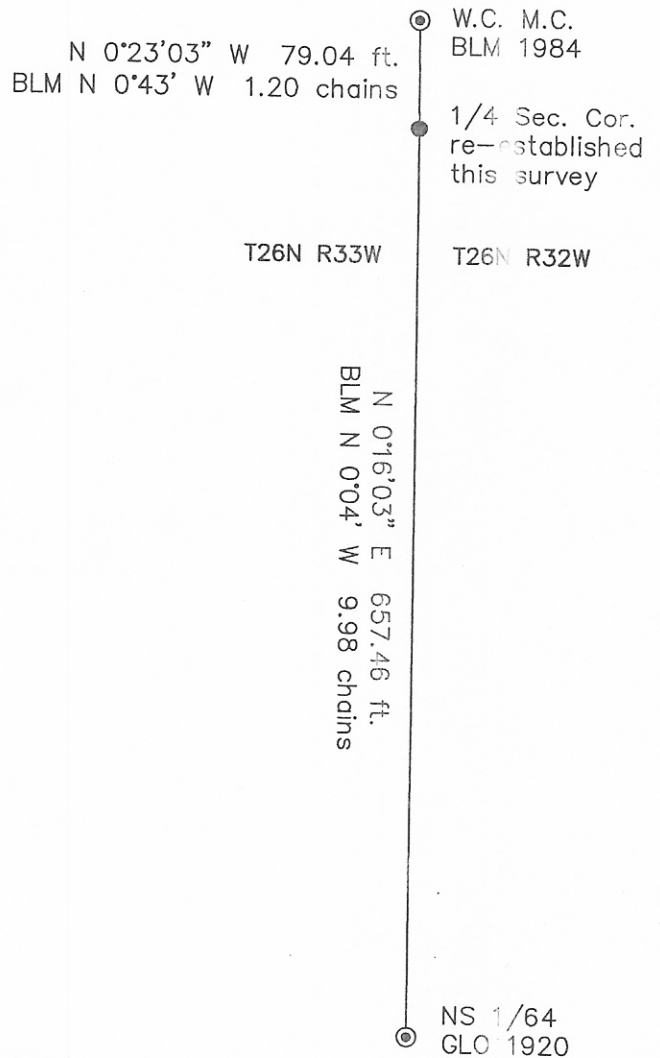


No suitable bearing trees available. Corner is situated on the south edge of a abandoned railroad grade/landing strip/road.

Date of Fieldwork: 7/14/2003

Survey crew: Steve A. Boyer, Tom M. Hommel & Catlin J. Kinden

U.S. Forest Service, Supervisors Office, 1101 Hwy. 2 West, Libby, MT 59923 (406) 263-6211



CERTIFICATION

I, Steven A. Boyer BOYER
certify the information shown herein is true and correct.
Steven A. Boyer
Signature Ground Party Chief

I, Roger O. Green GREEN
certify that this Corner Record correctly represents work performed by me or under my direction in compliance with the "Corner Recordation Act" (70-22-101, M.C.A.)
Roger O. Green
Signature of Surveyor & Seal

Date: 07/14/2003 Reg. No. 13769LS
Employer: U. S. Forest Service

253962 BOOK: 5 CORNER REC PAGE: 15 Pages: 2
STATE OF MONTANA SANDERS COUNTY
RECORDED: 01/09/2004 12:48 KOI: COR RECORD
PAT INGRAHAM CLERK AND RECORDER
FEE: \$0.00 BY: R. Waldner, Deputy
TO: ROGER GREEN UNITED STATES FOREST SERVICE,

County Official

Cross Index No. P-25 T26N., R33W., P.M., MT

Adopted July 1, 1981, Montana Board of Professional Engineers & Land Surveyors

