

INSTRUCTIONS

1. Original and or subsequent record used to evaluate the corner position.
2. Description of evidence found, note discrepancies in the record, state method of establishing lost or obliterated corners.
3. Description of monument and accessories set to perpetuate the corner position.
4. Sketch of corner, show all pertinent data which can best be shown in a sketch example, corner marking, topography ties, position of accessories, etc.
5. Certification must be signed and sealed by Land Surveyor registered in the State of Montana.
6. Fill in Cross Index & Section Diagram at bottom of sheet.

CERTIFIED CORNER RECORDATION

Corner SW CORNER SEC 18 T. 27N R. 47E P.M.M. ROOSEVELT County  
NW CORNER SEC 19

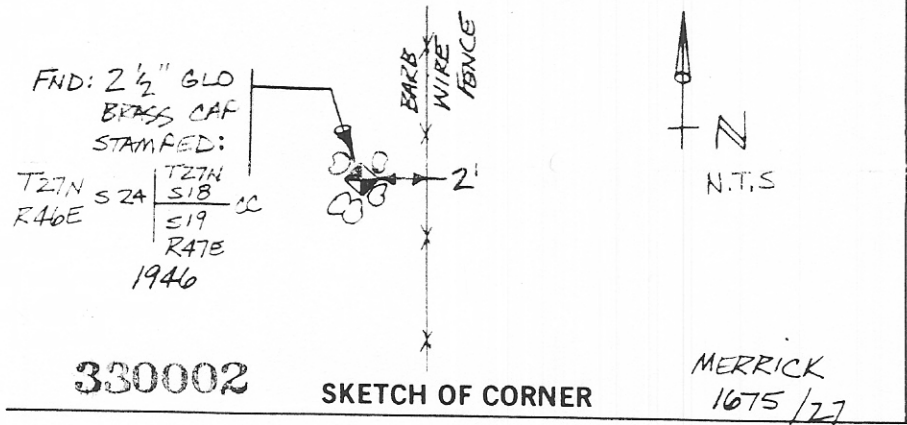
GLO NOTES: DEPENDENT RESURVEY OF A PORTION OF THE EAST BOUNDARY, T. 27N., R. 46E. COMMENCED 5-16-46, COMPLETED 6-14-46 Pg. 42-

9.74	Road, bears N.E. and S. 60° W.					
9.98	An Indian allotment corner, monumented with an iron post, 1 in. diam., 10 ins. above ground, firmly set, with brass cap mkd. 1491.					
15.00	Begin ascent of 50 ft. over S.E. slope, bears N. 60° E. and S. 30° W.					
20.03	The closing cor. of secs. 18 and 19, T. 27 N., R. 47 E., which is monumented with a limestone, 12 x 8 x 4 ins., firmly set, mkd. C C on E. face, with 3 grooves on N. and S. faces, beside which is an iron post, 3 ft. long, 1 in. diam., firmly set 26 ins. in the ground, with brass cap mkd.					
<table border="1"> <tr><td>T 27 N</td></tr> <tr><td>R 47 E</td></tr> <tr><td>S 18</td></tr> <tr><td>S 19</td></tr> </table>		T 27 N	R 47 E	S 18	S 19	
T 27 N						
R 47 E						
S 18						
S 19						
At the corner point						
Set an iron post, 3 ft. long, 2 ins. diam., 36 ins. in the ground, with brass cap mkd.						
<table border="1"> <tr><td>T 27 N</td></tr> <tr><td>R 46 E</td></tr> <tr><td>S 18</td></tr> <tr><td>S 19</td></tr> <tr><td>R 47 E</td></tr> </table>		T 27 N	R 46 E	S 18	S 19	R 47 E
T 27 N						
R 46 E						
S 18						
S 19						
R 47 E						
raise a mound of stone, 3 ft. base, 2 ft. high, E. of cor., bury the original corner stone and set the old iron post alongside the corner monument.						
26.50	Small spur slopes SE.; thence along broken E. slope.					
29.32	Power transmission line, bears E. and W.					
33.20	Draw, course S. 20° E.					

PAGE 42

EVIDENCE FOUND: 2 1/2" GLO BRASS CAP IN MOUND OF STONES STAMPED: AS DESCRIBED ABOVE

T27N  
S24  
R46E  
S18  
S19  
R47E  
1946



CERTIFICATION

I, PAUL E. GRABOWSKI  
 certify the information shown herein is true and correct.  
Paul E. Grabowski  
 Signature Ground Party Chief

I, Doyle G. Abrahamson  
 certify that this Corner Record correctly represents work performed by me or under my direction in compliance with the "Corner Recordation Act" (70-22-101 et seq., M.C.A.)  
Doyle G. Abrahamson  
 Registered Land Surveyor Seal

Date: 2/12/90 Reg. No. 7157S  
 Employer: MERRICK & CO.

Office of Clerk and Recorder, County of Roosevelt. This "corner record" was filed for record on December 17, 1990 at 8:50 o'clock A.M. was noted on the cross-index plat and is assigned page No. \_\_\_\_\_, in book No. \_\_\_\_\_ Fee D.H. \_\_\_\_\_  
Selen L. Eggbrecht  
 County Official

Merrick & Company  
 P.O. Box 22026, Denver, CO 80202 Cross Index No. N-1 T. 27N R. 47E P.M.M.



• corner this sheet

File # 480