

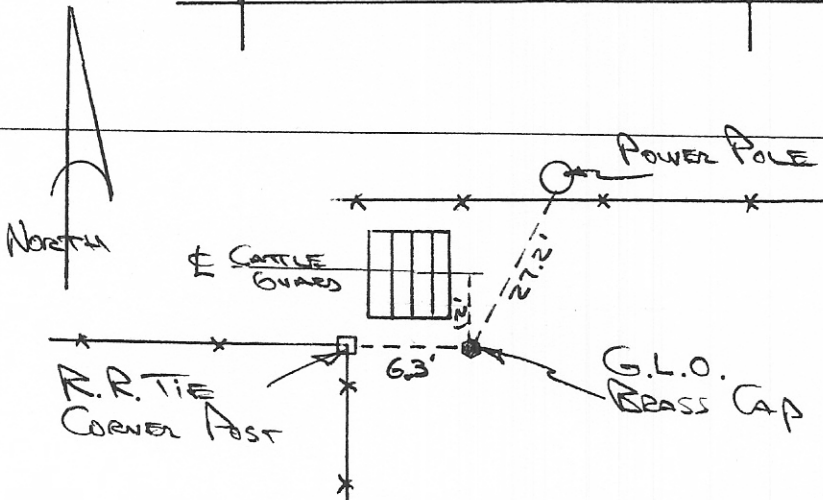
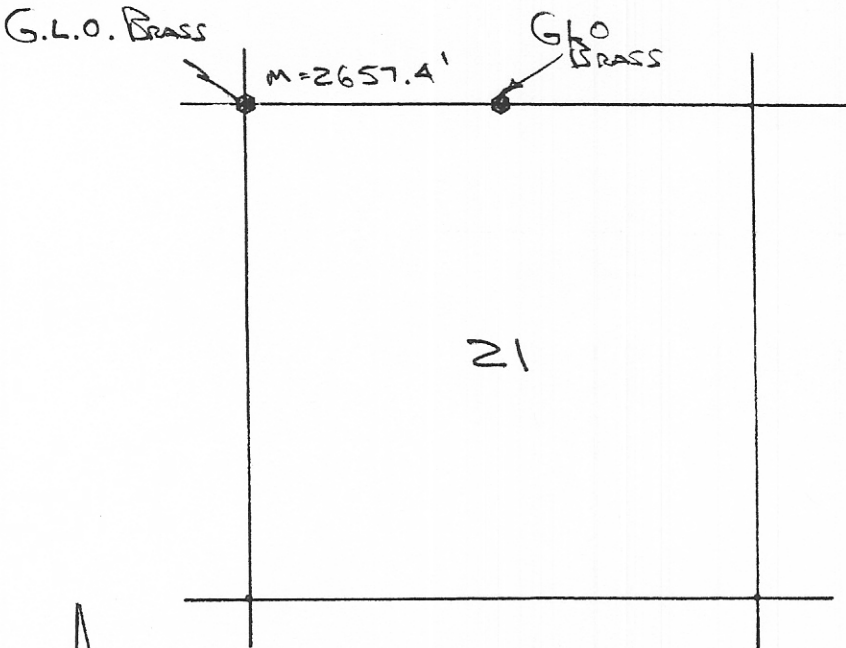
INSTRUCTIONS

1. Original and or subsequent record used to evaluate the corner position.
2. Description of evidence found, note discrepancies in the record, state method of establishing lost or obliterated corners.
3. Description of monument and accessories set to perpetuate the corner position.
4. Sketch of corner, show all pertinent data which can best be shown in a sketch example, corner marking, topography ties, position of accessories, etc.
5. Certification must be signed and sealed by Land Surveyor registered in the State of Montana.
6. Fill in Cross Index & Section Diagram at bottom of sheet.

CERTIFIED CORNER RECORDATION

Corner NORTHWEST CORNER SEC. 21 T. 27N R. 47E P.M.M. ROOSEVELT County

1. I used copies of the original GLO plat for bearing and distance ties to the corners.
2. I found the GLO brass cap as shown below for the corner location.
3. No additional monuments were set, I tied the corner down as shown below.



MONTANA PROFESSIONAL LAND SURVEYOR

I, GREGORY L. JOHNSON certify the information shown herein is true and correct.  
 Signature Ground Party Chief  
 7324LS

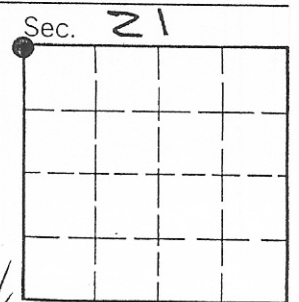
I, [Signature] certify that the Corner Recordation represents work performed by me or under my supervision in compliance with the "Corner Recordation Act" (Section 70-22-101, M.C.A.)

Signature of Surveyor & Seal  
 Date: 12/88 Reg. No. 7324 LS  
 Employer: Westrum's Land Surveying

INDEXED

Office of Clerk and Recorder, County of Roosevelt. This "corner record" was filed for record on January 16, 1989 at 10:25 o'clock A.M. was noted on the cross-index plat and is assigned page No. \_\_\_\_\_, in book No. \_\_\_\_\_ Fee: D.H.

Helen A. Eggbrecht - Eleanor K. Linger  
 County Official Deputy



#388