

1. Original and/or subsequent record used to e
2. Description of evidence found, note discrep
3. Description of monument and accessories s
4. Sketch of corner, show all pertinent data.
5. Certification must be signed and sealed by
6. Fill in index information and show the corn

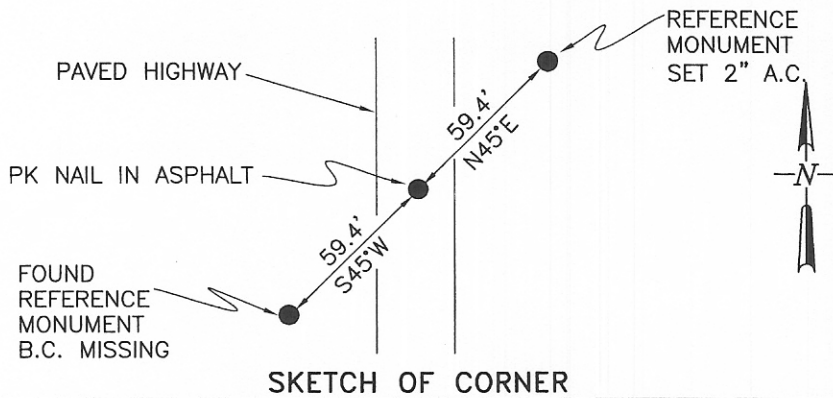
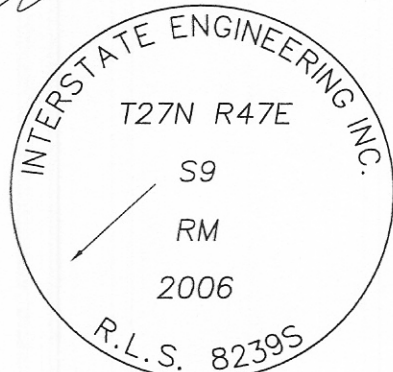
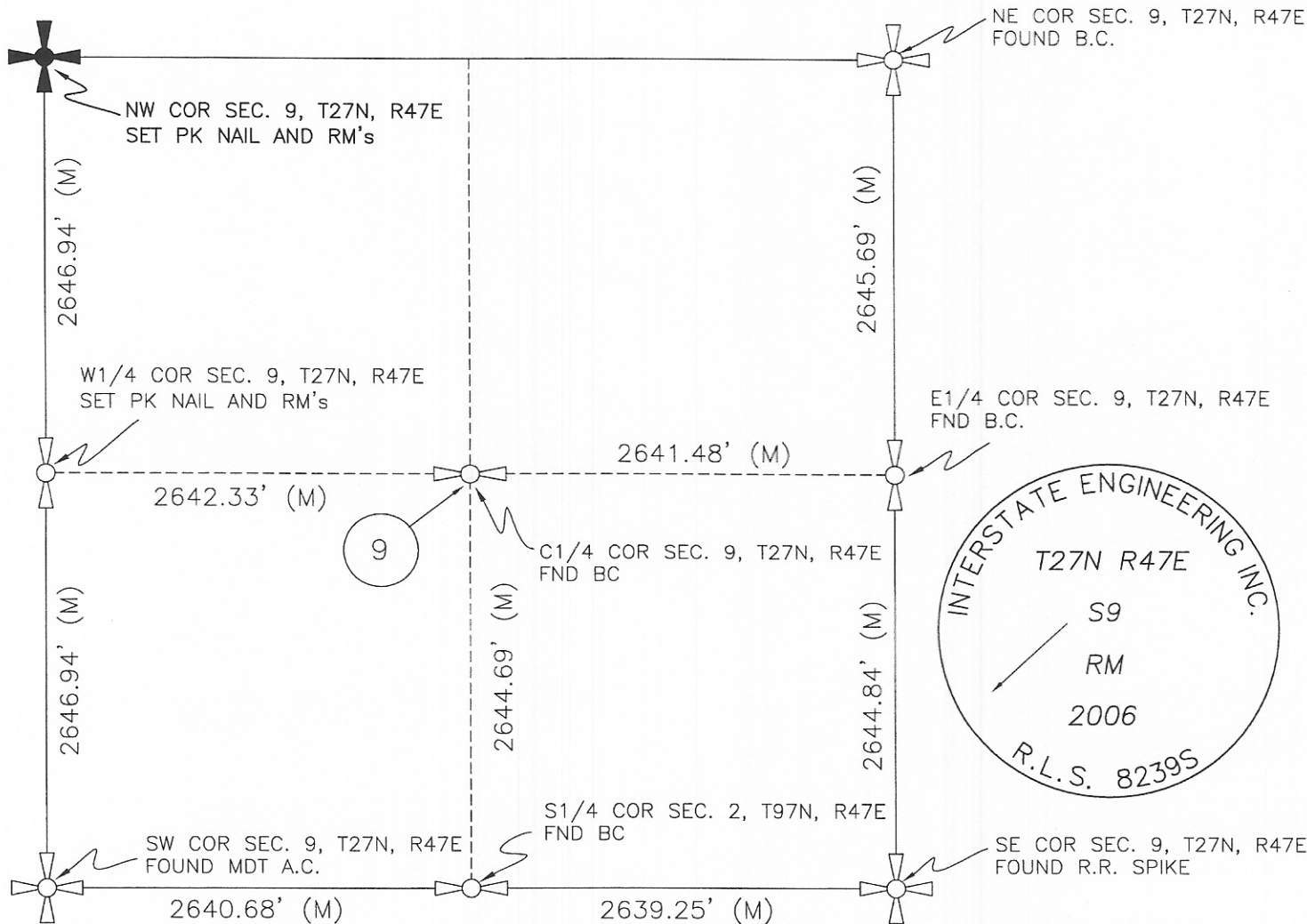
STATE OF MONTANA ROOSEVELT COUNTY  
 RECORDED: 01/25/2007 9:20 KOI: COR RECORD  
 Cheryl A Hansen CLERK AND RECORDER  
 FEE: \$0.00  
 TO: INTERSTATE ENGINEERING PO BOX 648, SIDNEY MT 59270

BY: *David L. Zimmerman*  
 1035

### CERTIFIED CORNER RECORDATION

Corner NW SEC. 9 T. 27N R. 47E P.M.M. ROOSEVELT County

1. Had copy of the 1946 Dependent Resurvey Plat and notes. Had a copy of the quad map.
2. I found the southwest reference monument as described in the 1946 survey. I replaced the northeast reference monument and set a PK nail in the asphalt for the Northwest corner. This position fit very well with the monuments I found west and east of this location.
3. Sketch as shown.



**CERTIFICATION**  
 I, \_\_\_\_\_  
 certify the information shown herein is true and correct.  
 Signature Ground Party Chief  
**DAVID L. ZIMMERMAN**  
 I, \_\_\_\_\_  
 certify that this Corner Record correctly represents work performed by me or under my direction in compliance with the "Corner Recordation Act" (70-22-101, et seq., M.C.A.)  
 Signature of Surveyor & Seal  
**DAVID L. ZIMMERMAN**  
 Date: **10-11-06** Reg. No. **8239S9 LS**  
 Employer: **INTERSTATE ENGINEERING INC.**  
 I.E.S. 06-9-2231

Office of Clerk and Recorder, County of \_\_\_\_\_ . This "corner record" was filed for record on \_\_\_\_\_ was noted on the cross-index plat and is assigned page No. \_\_\_\_\_, in book No. \_\_\_\_\_

County Official \_\_\_\_\_

Cross Index No. E-9 T. 27N R. 47E PMM

Sec. 9

|   |  |  |  |
|---|--|--|--|
| ● |  |  |  |
|   |  |  |  |
|   |  |  |  |
|   |  |  |  |

● corner this sheet