

INSTRUCTIONS

1. Original and/or subsequent record used to evaluate the corner position.
2. Description of evidence found, note discrepancies in the record, state method of establishing lost or obliterated corners.
3. Description of monument and accessories set to perpetuate the corner position.
4. Sketch of corner, show all pertinent data which can best be shown in a sketch example, corner marking, topography ties, position of accessories, etc.
5. Certification must be signed and sealed by Land Surveyor registered in the State of Montana.
6. Fill in Cross Index & Section Diagram at bottom of sheet.

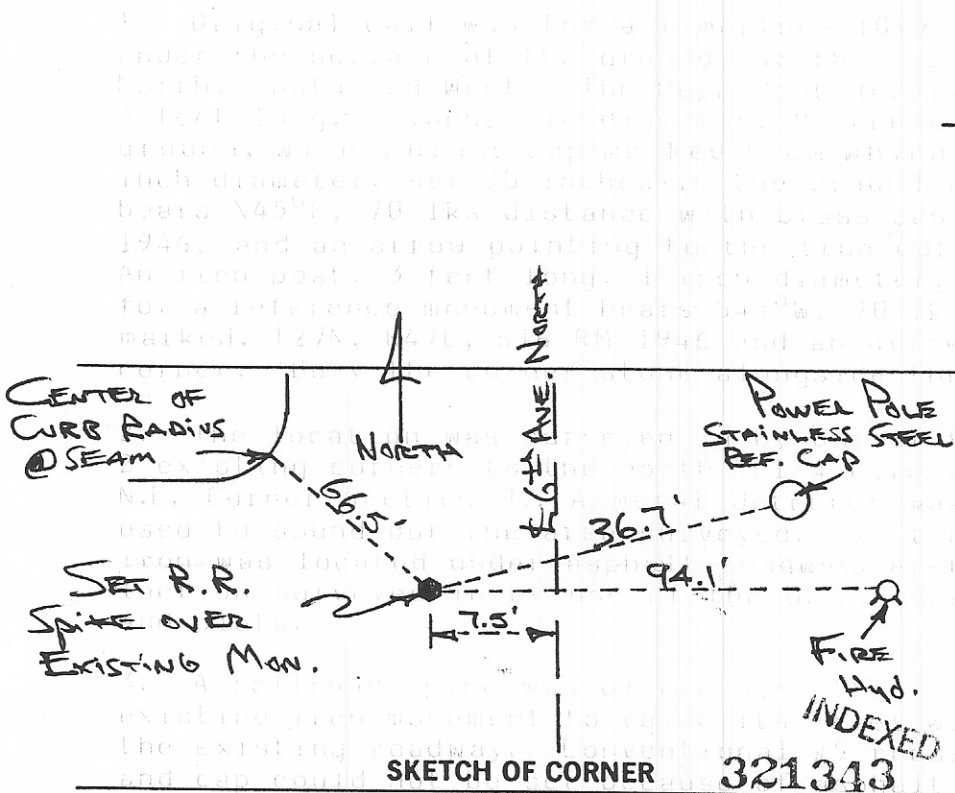
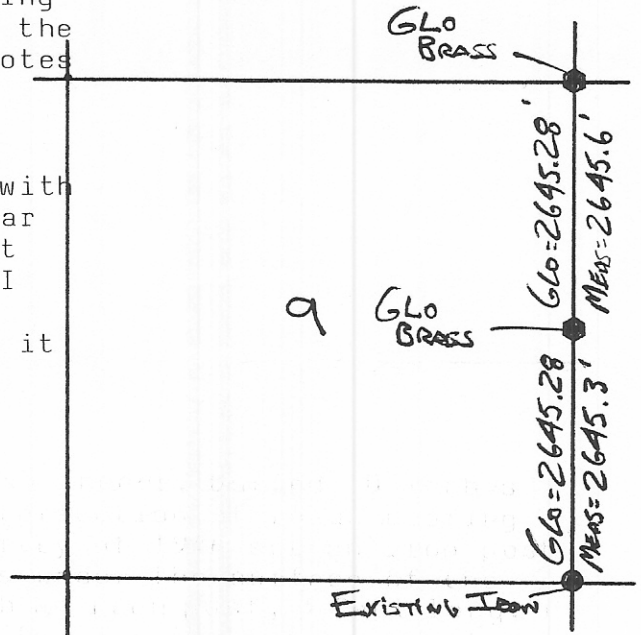
CERTIFIED CORNER RECORDATION

Corner Southeast Corner Section 9 T. 27N R. 47E P.M.M. Roosevelt County

1. Original call was for a limestone 10x9x5 inches, buried 10 inches under the surface of the ground, at the intersection of roads bearing North, South and West. The Dependent Resurvey of 1946 set an iron post 3 feet long, 2 inches in diameter, 8 inches under the surface of the ground, with a brass cap marked from which an iron post, 3 feet long, 1 inch diameter, set 30 inches in the ground for a reference monument, bears N45°E, 70 lks distance with brass cap marked, T27N, R47E, S10 RM 1946, and an arrow pointing to the true corner. An iron post, 3 feet long, 1 inch diameter, set 30 inches in the ground, for a reference monument bears S45°W, 70 lks distance, with brass cap marked, T27N, R47E, S16 RM 1946 and an arrow pointing to the true corner. Bury the corner stone alongside the iron post.

2. The location was surveyed in by use of the 2 existing corners to the north (E1/4 Corner & N.E. Corner Section 9). A metal detector was used to sound out the area surveyed. Existing iron was located under asphalt roadway. At the loction surveyed in by use of the G.L.O. notes and plats.

3. A railroad spike was placed over the existing iron monument to raise its level with the existing roadway. Conventional #5 rebar and cap could not be set because of asphalt and the existence of the monument below. I accepted this as the location to the S.E. corner to Section 9, T27N, R47E. And tied it down according to sketch below.



INTERSTATE ENGINEERING, INC.
Box 648
Sidney, Montana 59270

MONTANA
CERTIFICATION
GREGORY L. JOHNSON
7324LS
Signature Ground Party Chief
REGISTERED SURVEYOR
I, Gregory L. Johnson
certify that this record accurately represents work performed by me or under my direct supervision in compliance with the "Corner Recordation Act" (70-22-101 et seq., M.C.A.)
Signature of Surveyor & Seal
Date: 12-87 Reg. No. 7324 L.S.
Employer:

356
Office of Clerk and Recorder, County of Roosevelt. This "corner record" was filed for record on February 4, 1988 at 8:43 o'clock A.M. was noted on the cross-index plat and is assigned page No. _____, in book No. _____
Fee D.H. _____
Alex S. Eggemeier
County Official

Sec. Nine (9)

• - corner this sheet