

INSTRUCTIONS

1. Original and/or subsequent record used to evaluate the corner position.
2. Description of evidence found, note discrepancies in the record, state method of establishing lost or obliterated corners.
3. Description of monument and accessories set to perpetuate the corner position.
4. Sketch of corner, show all pertinent data which can best be shown in a sketch example, corner marking, topography ties, position of accessories, etc.
5. Certification must be signed and sealed by Land Surveyor registered in the State of Montana.
6. Fill in Cross Index & Section Diagram at bottom of sheet.

CERTIFIED CORNER RECORDATION

Corner East 1/4 Corner Section 9 T. 27N R. 47E P.M.M. Roosevelt County

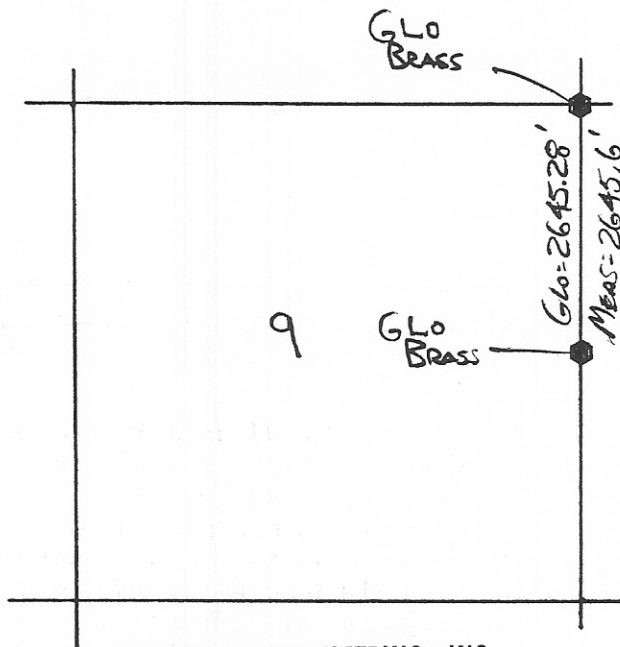
1. Point for the 1/4 Section Corner of Sections 9 and 10 at proportionate distance; falls in north and south road. Set an iron post 1 1/2 feet long, 1 inch diameter, 13 inches under the surface of the ground with brass cap marked, from which an iron post, 3 feet long, 1 inch diameter, set 30 inches in the ground for a reference monument, bears N45°E, 100 lks distance with brass cap marked 1/4 S10 RM 1946 and an arrow pointing to the true corner. An iron post, 3 feet long, 1 inch diameter, set 30 inches in the ground for a reference monument, bears S45°W, 100 lks distance with brass cap marked 1/4 S9 RM 1946 and an arrow pointing to the true corner.

A corner of fences extending N., S., and W., bears West 53 lks distance.

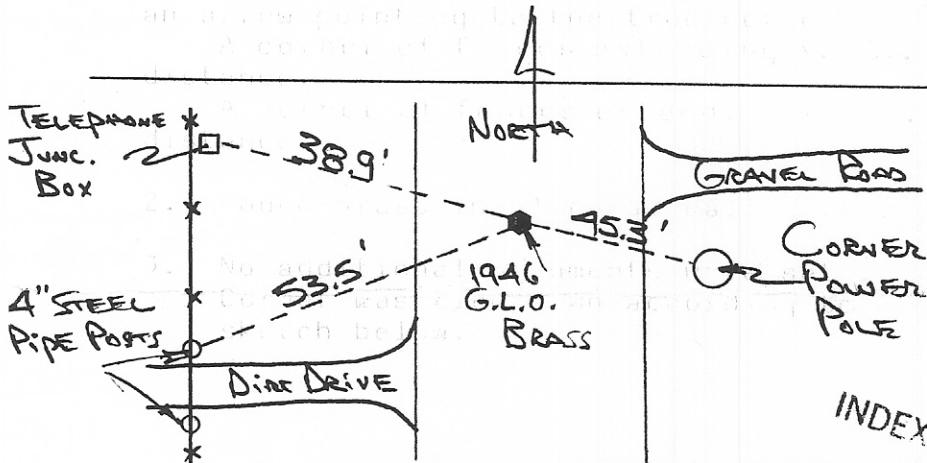
A corner of fences extending N., S., and E., bears East 80 lks distance.

2. Found brass in place as called for.

3. No additional monuments were set. Corner was tied down according to sketch below.



INTERSTATE ENGINEERING, INC.
Box 648
Sidney, Montana 59270



SKETCH OF CORNER 321354

MONTANA PROFESSIONAL ENGINEERS & LAND SURVEYORS

I, _____ certify the information shown herein is true and correct.

GREGORY L. JOHNSON
Signature Ground Party Chief
7324LS

I, Gregory L. Johnson, _____ certify that this Corner Recordation represents work performed by me or under my direction in compliance with the "Corner Recordation Act" (MCA 2-10-101, M.C.A.)

Signature of Surveyor & Seal

Date: 12-87 Reg. No. 7324 L.S.

Employer: _____

INDEXED

Office of Clerk and Recorder, County of Roosevelt. This "corner

record" was filed for record on February 4, 1988 at 8:43 o'clock A.M.

was noted on the cross-index plat and is assigned page No. _____, in

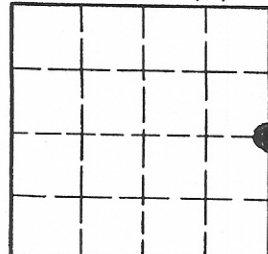
book No. _____

Fee D.H. _____

Cross Index No. G-13 T. 27N R. 47E P.M.M.

Adopted July 1, 1981, Montana Board of Professional Engineers & Land Surveyors

Sec. Nine (9)



• - corner this sheet

267