

INSTRUCTIONS


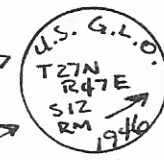
1. Original and/or subsequent record used to evaluate the corner position.
2. Description of evidence found, note discrepancies in the record, state method of establishing lost or obliterated corners.
3. Description of monument and accessories set to perpetuate the corner position.
4. Sketch of corner, show all pertinent data which can best be shown in a sketch example, corner marking, topography ties, position of accessories, etc.
5. Certification must be signed and sealed by Land Surveyor registered in the State of Montana.
6. Fill in Cross Index & Section Diagram at bottom of sheet.

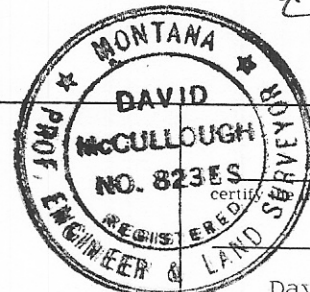
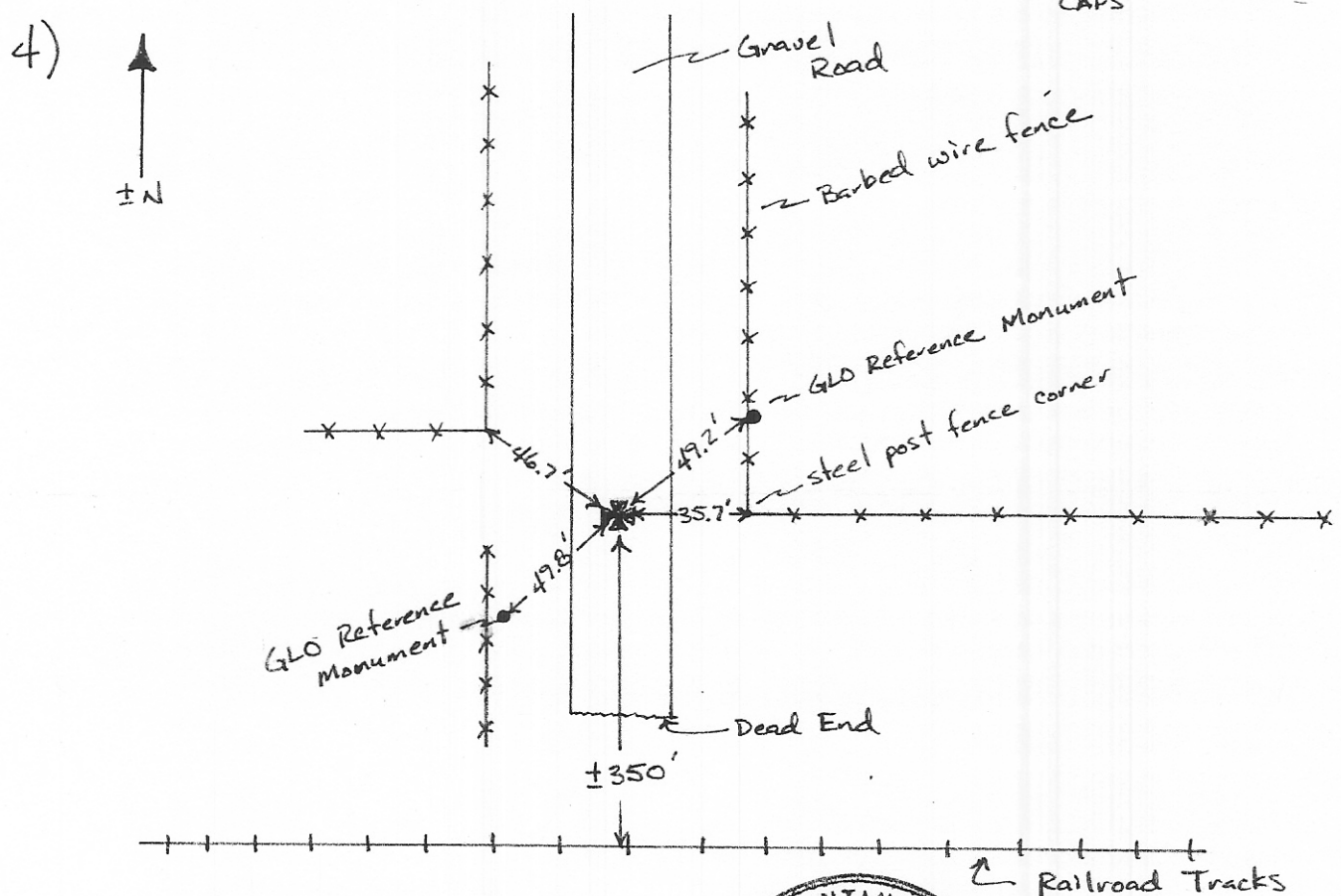
CERTIFIED CORNER RECORDATION

Corner 11 | 12 / 14 | 13 T. 27 N R. 47 E P.M.M. Roosevelt County

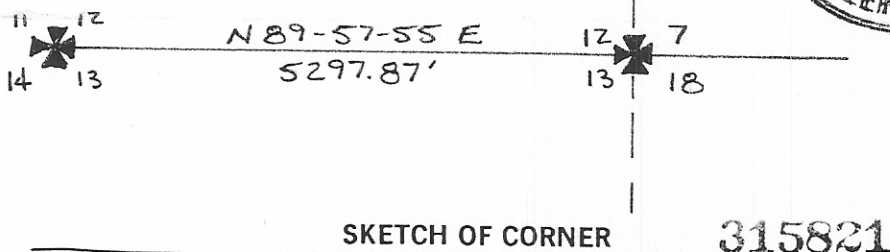
1) 1946 Dependent Resurvey of subdivisional lines of T27N, R47E by Bureau of Land Management

2) Found bent 3/4" Rebar @ ± E of gravel road, Referenced by original GLO brass cap 49.2' to NE (Record = 75 Links) & original GLO brass cap to SW, a distance of 49.8'. (Record = 75 Links)

3) Reference Monument description: NE ⇒  SW ⇒  on bent 1" dia. pipe



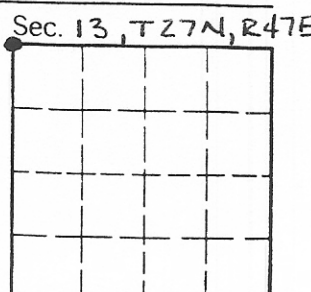
CERTIFICATION
 certify that the information shown herein is true and correct.
 Signature Ground Party Chief
 David W. McCullough
 certify that this Corner Record correctly represents work performed by me or under my direction in compliance with the "Corner Recordation Act" (70-22-101, et seq., M.C.A.)
 Signature of Surveyor & Seal
 Date: 7/86 Reg. No. 823 ES
 Employer: HKM Associates



282

Office of Clerk and Recorder, County of Roosevelt. This "corner record" was filed for record on July 25, 1986, 8:30 AM was noted on the cross-index plat and is assigned page No. _____, in book No. _____

Julius S. Eggbrecht
 County Official
 21



Fee: D.H.
 HKM Associates
 P O Box 31318
 Airport Industrial Park
 Billings, MT 59107

Cross Index No. J-25 T. 27 N R. 47 E P.M.M.
 Adopted July 1, 1981. Montana Board of Professional Engineers & Land Surveyors

• corner this sheet