

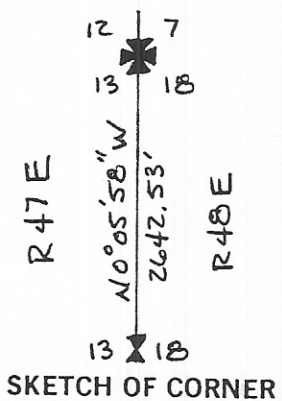
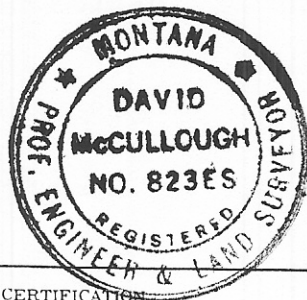
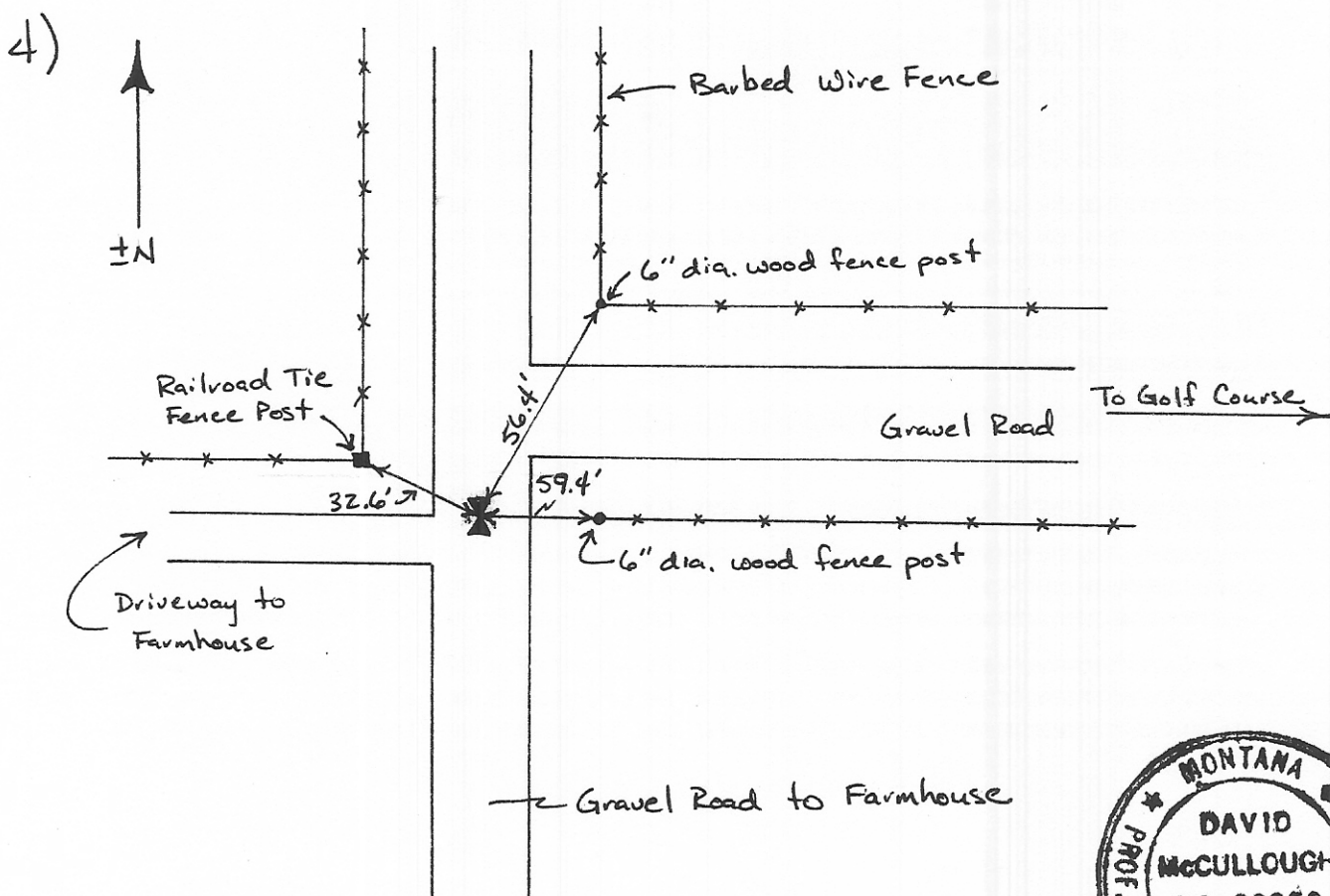
INSTRUCTIONS

1. Original and/or subsequent record used to evaluate the corner position.
2. Description of evidence found, note discrepancies in the record, state method of establishing lost or obliterated corners.
3. Description of monument and accessories set to perpetuate the corner position.
4. Sketch of corner, show all pertinent data which can best be shown in a sketch example, corner marking, topography ties, position of accessories, etc.
5. Certification must be signed and sealed by Land Surveyor registered in the State of Montana.
6. Fill in Cross Index & Section Diagram at bottom of sheet.

CERTIFIED CORNER RECORDATION

Corner 1/4 13/18 T. 27N R. 47E P.M.M. Roosevelt County

- 1) 1946 Dependent Resurvey of East Boundary of T27N, R47E by Bureau of Land Management
- 2) Found 1/2" iron pin @ C of N-S gravel road & in line with barbed wire fence to East as stated in the original record. No original monuments were found. (3)



315822

CERTIFICATION

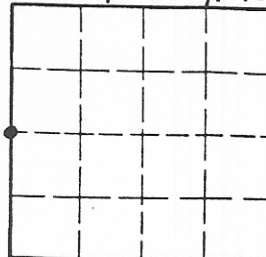
I, _____
certify the information shown herein is true and correct.

Signature Ground Party Chief
David W. McCullough
I, _____
certify that this Corner Record correctly represents work performed by me or under my direction in compliance with the "Corner Recordation Act" (70-22-101, et seq., M.C.A.)
David W. McCullough
Signature of Surveyor & Seal
Date: 7/86 Reg. No. 823 ES
Employer: HKM Associates

Office of Clerk and Recorder, County of Roosevelt. This "corner record" was filed for record on July 25, 1986, 8:30 AM was noted on the cross-index plat and is assigned page No. _____, in book No. _____

Selen S. Eggbrecht
County Official

Sec. 18, T27N, R48E



• - corner this sheet

INDEXED

#283

Fee: D.H.
HKM Associates
P.O. Box 31318
Airport Industrial Park
Billings, MT 59107

Cross Index No. L-1 T. 27N R. 48E P.M.M.
Adopted July 1, 1981, Montana Board of Professional Engineers & Land Surveyors
L-25 27N 47E