

INSTRUCTIONS

1. Original and/or subsequent record used to evaluate the corner position.
2. Description of evidence found, note discrepancies in the record, state method of establishing lost or obliterated corners.
3. Description of monument and accessories set to perpetuate the corner position.
4. Sketch of corner, show all pertinent data which can best be shown in a sketch example, corner marking, topography ties, position of accessories, etc.
5. Certification must be signed and sealed by Land Surveyor registered in the State of Montana.
6. Fill in Cross Index & Section Diagram at bottom of sheet.

CERTIFIED CORNER RECORDATION

Corner SOUTH 1/4 SEC. 30

T. 28N., R. 3W., P.M.M.

PONDERA County

RECORD GLO 1874

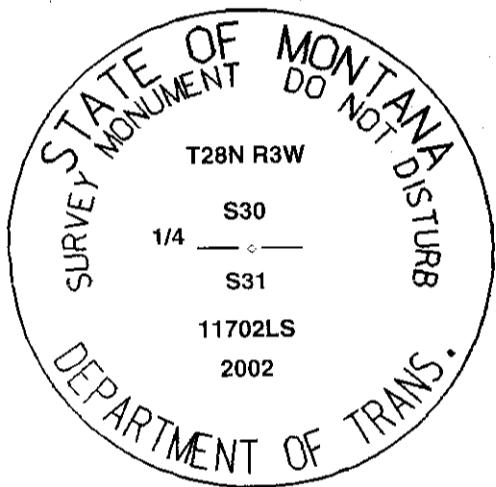
Set a boulder 10 x 10 x 5 ins., 7 in. in the ground for 1/4 Sec. Cor. marked 1/4 on the North side and raised a mound of stone alongside.

FOUND MDT 2002

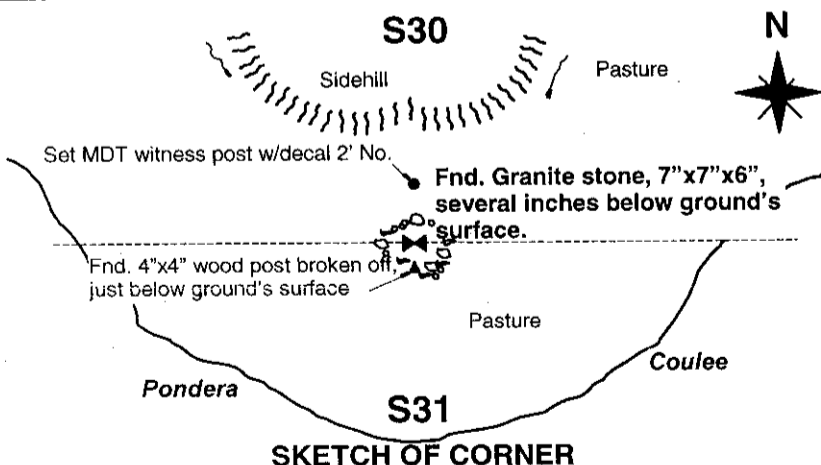
Found a granite stone/boulder 7"x7"x6", several inches below the ground's surface with no visible marks. Also, found accessories including numerous stones and a 4"x4" fence post 1' South, broken off, just below the ground's surface.

SET MDT 2002

Replaced original stone with a 2 1/2" x 30" aluminum pipe with a 3 1/4" aluminum cap stamped as shown below, 6" above ground. Placed a ring of stone around cap and set a witness post with MDT decal 2' North of said monument. Buried original stone adjacent to and North of monument.



See Certificate of Survey Number 304918



CERTIFICATION

I, Kenneth E. Dunlap
certify the information shown herein to be true and correct.
Kenneth E. Dunlap
Signature of Ground Party

I, Theodore M. Brown
certify that this Corner Record correctly represents work performed by me or under my supervision in compliance with the "Corner Recordation Act" (18-02-105 et seq.)
Theodore M. Brown
Signature of Surveyor & Seal

Date: 7/15/02 Reg. No. 11702LS
Employer: Montana Department of Transportation

304919
Office of Clerk and Recorder, County of PONDERA. This "corner record" was filed for record on July 15, 2002 at 1:43 PM, was noted on the cross-index plat, and is assigned Page No. _____, in Book No. _____.

Janice Hopper
County Official

Sec. 30

• — Corner this sheet

Cross Index No. V-03 T. 28N., R. 3W., PMM