

1950

CERTIFIED LAND CORNER RECORDATION

DESCRIPTION OF CORNER EVIDENCE FOUND, AND ORIGINAL RECORD (IF KNOWN)

AT corner common to Sections 14, 15, 22 & 23, found 3/4" x 30" I.P. marking Section corner shown on City of Conrad Plat(orig. stone not found).

AT quarter corner common to Sections 14 & 15, found 3/4" x 30" I.P. marking quarter corner shown on City of Conrad Plat(orig. stone not found).

DESCRIPTION OF MONUMENT AND ACCESSORIES ESTABLISHED TO PERPETUATE THE ORIGINAL LOCATION OF THIS CORNER:

Date of work: Sept 1974

FROM corner common to Sections 14, 15, 22, & 23 placed Brass Caps Marking references:

47.0 feet, bearing N0°41'E in Sec. 14 and 30.0 feet, bearing S0°41'W in Sec. 22.

Bearings from USGS Station NIGG.

SKETCH, WITH COURSE AND DISTANCE TO ADJACENT CORNERS IF DETERMINED IN THIS SURVEY. (MAY SKETCH OR PASTE REPRODUCTION ON REVERSE SIDE.)

Corner will be covered by Plant Mix overlay in connection with Highway Project

A AD-14 (2).

Surveyor's Seal

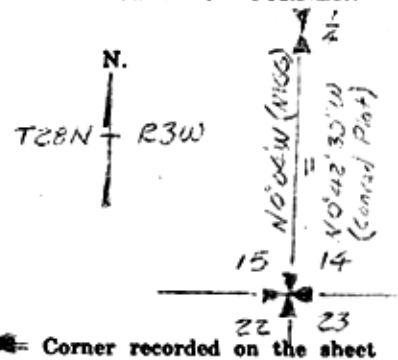
I, Stanley W Newton, Land Surveyor, 3495S
certify that the information shown herein is true and correct.

Signature of Ground Party Chief

I, Stanley W Newton
certify that I have carefully performed or reviewed the work done on the diagrammed corner as reported on this recordation form and approve the same.

Signature of Surveyor

DIAGRAM OF CORNER:



224984

3495 S
Registration Number

Office of Clerk and Recorder, County of _____

This "corner record" was filed for record on the 18th day of September 1974, was noted on the cross-index plat and is
at 1:10 P.M.

assigned page No. 19, in book No. 1

Gladys Mottensen
County Official