

INSTRUCTIONS

1. Original and/or subsequent record used to evaluate the corner position.
2. Description of evidence found, note discrepancies in the record, state method of establishing lost or obliterated corners.
3. Description of monument and accessories set to perpetuate the corner position.
4. Sketch of corner, show all pertinent data which can best be shown in a sketch example, corner marking, topography ties, position of accessories, etc.
5. Certification must be signed and sealed by Land Surveyor registered in the State of Montana.
6. Fill in Cross Index & Section Diagram at bottom of sheet.

CERTIFIED CORNER RECORDATION

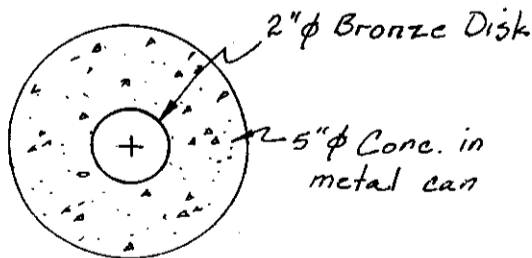
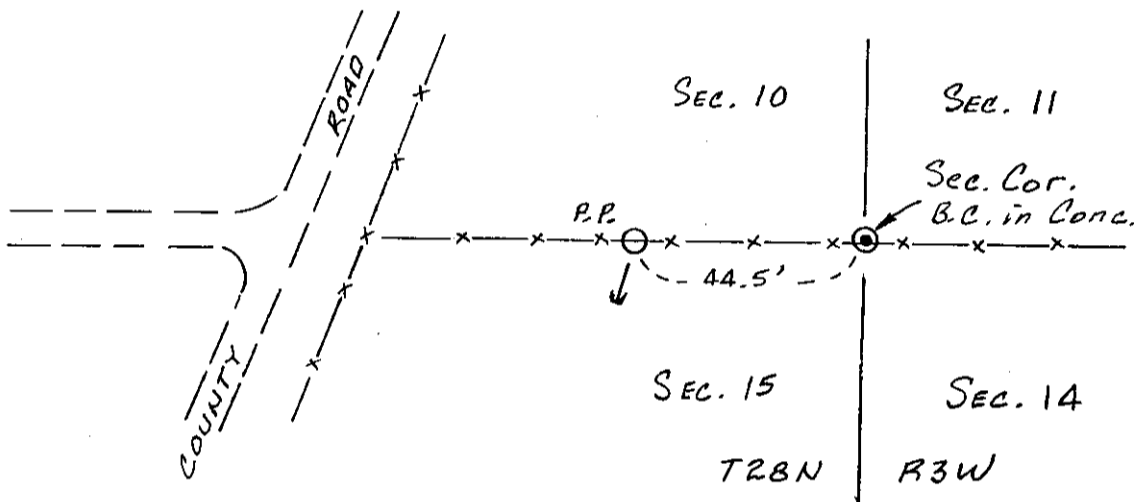
Corner NW Section 14 T. 28N., R. 3W., P.M.M. PONDERA County

RECORD: 1874 GLO Notes, surveyed by McFarland: "Set a granite stone 12x9x5 in. 8 in. in the ground for Cor. to Secs. 10, 11, 14 and 15 Marked with 2 notches on the E. and 4 notches on the S. edges."

FOUND: A 2 in. diam. brass cap, cast in concrete; no markings, unknown origin; located in an east-west fence. Distance east To the NE corner of Sec. 14 (a bronze cap 2 ft. west of the centerline of Old Highway 91) measures 5269.5 ft. which compares to GLO record of 5273.4 ft. This is accepted for the section corner.

MAINTENANCE: A cross was chiseled in the brass cap for a tie point. The monument is solid and requires no further work.

Date of work: April, 2003.



SKETCH OF CORNER

CERTIFICATION

I, _____, certify the information shown herein is true and correct.

Signature of Ground Party Chief

I, Ronald A. Lindseth, certify that this Corner Record correctly represents work performed by me or under my direction in compliance with the "Corner Recordation Act" (70-22-101, et seq., MCA)

Ronald A. Lindseth
Signature of Surveyor & Seal

Date: November 11, 2003 Reg. No. 8644S

Employer: Lindseth Survey Co.

Office of Clerk and Recorder, County of PONDERA. This "corner record" was filed for record on _____, was noted on the cross-index plat, and is assigned Page No. _____, in Book No. _____.

County Official

Sec. 14, T28N, R3W

• — Corner this sheet

Cross Index No. J-17 T. 28N., R. 3W., PMM

Adopted July 1, 1981, Montana Board of Professional Engineers & Land Surveyors

3078/2