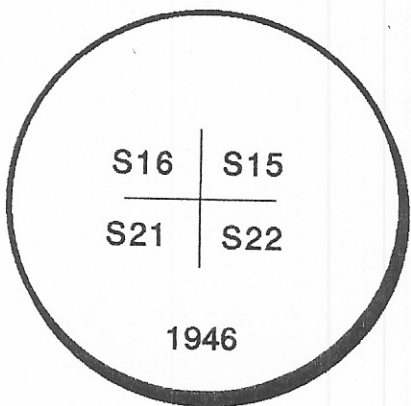


CERTIFIED CORNER RECORDATION

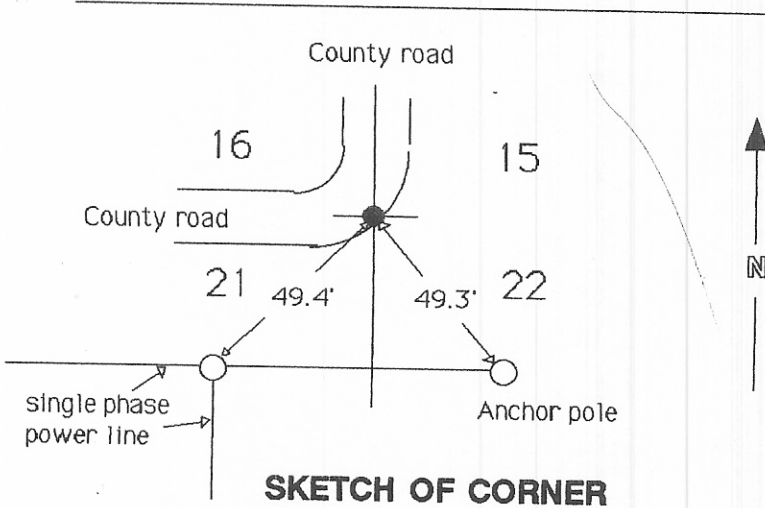
Corner	SW Section 15	T. 28N	R. 39E	PMM	Valley	County
--------	---------------	--------	--------	-----	--------	--------

Found: Brass cap 2.4 feet below the surface in line with a county road running North and in line with a county road running West.

Set: 40 penny nails with plastic caps in a single phase power line pole 49.4 feet southwest of corner and an anchor pole 49.3 feet southeast of corner. Also set a 1/2" X 24" rebar with plastic cap over the top of the brass cap for easier access.



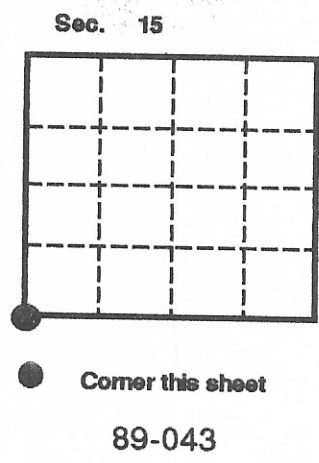
U.S. B.L.M. Brass Cap



SKETCH OF CORNER

CERTIFICATION
 I, Richard E. Guenzi
 certify the information shown herein is true and correct.
Richard E. Guenzi
 Signature of Ground Party Chief
 I, Richard E. Guenzi
 certify that this Corner Record correctly represents work performed by me or under my direction in compliance with the "Corner Recordation Act" (70-22-101, et seq., M.C.A.)
Richard E. Guenzi
 Date: 3-1-90 Reg. No. 886S
 Employer: Guenzi Surveys

Document Number: 80143
 Office of Clerk and Recorder, County of Valley. This "corner record" was filed for record on MARCH 2nd, 1990 at 10:30 A.M was noted on the cross-index plat and is assigned page No. 883, in book No. 1
 Fee: None
 By: *Mary Lou Cree*
 Clerk and Recorder
Mary Cree
 Deputy



T. 28N R. 39E PMM

N-13