

1. ORIGINAL AND SUBSEQUENT RECORD USED TO EVALUATE THE CORNER POSITION.
2. DESCRIPTION OF EVIDENCE FOUND, NOTE DISCREPANCIES IN THE RECORD DATE METHOD OF ESTABLISHING LOST OR OBLIVIONED CORNERS.
3. DESCRIPTION OF MONUMENT AND ACCESSORIES SET TO PERPETUATE THE CORNER POSITION.
4. SKETCH OF CORNER, SHOW ALL PERTINENT DATA WHICH CAN BEST BE SHOWN IN A SKETCH EXAMPLE, CORNER MARKINGS, TOPOGRAPHY TIES, POSITION OF ACCESSORIES, ETC.
5. CERTIFICATION MUST BE SIGNED AND SEALED BY LAND SURVEYOR REGISTERED IN THE STATE OF MONTANA.
6. FILL IN CROSS INDEX AND SECTION DIAGRAM AT BOTTOM OF SHEET.

CERTIFIED CORNER RECORDATION

CORNER Northeast SEC. 11, T. 28 N., R. 39 E., P.M.M., Valley COUNTY, MT

ORIGINAL RECORD : Surveyed by James M. Page & Rodney W. Page in Oct., 1891

Set a granite stone 15x9x6 ins., 10 ins. in the ground, for cor. of secs. 2, 3, 10 & 11, marked with 5 notches on S. and 2 notches on E. edges; dug pits 18x18x12 ins. in each sec. 5 1/2 ft. dist. and raise a mound of earth 2 ft. high, 4 1/2 base alongside.

SUBSEQUENT RECORD: Dependent Resurvey by Wm. H. Teller & Lyle F. Jones in 1946.

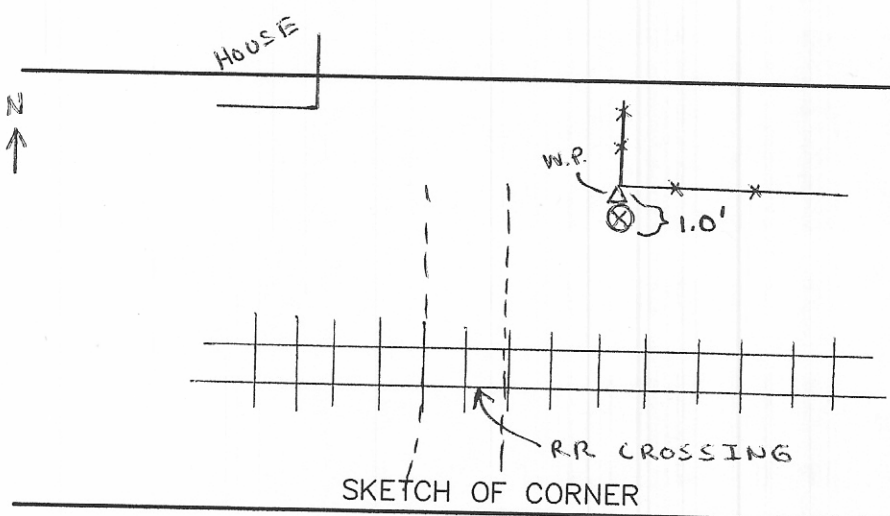
The corner of secs. 2, 3, 10 & 11, marked by the intersection of the center of abandoned lanes bearing N. & E. At the corner point, Set an iron post, 3 ft. long, 2 ins. diam., 30 ins. in the ground, with brass cap mkd.

T28N R39E
S 3	S 2
S 10 | S 11
1946

The original corner stone was found lying in the corner of fences. It is buried at the base of the iron pipe.

EVIDENCE FOUND: Found brass cap flush with ground 1 foot south of a N-E fence corner.

SET: Monument in good condition. Set a 5 1/2 ft. galv. steel post as a witness post along the north side of found monument.



CERTIFICATION

I, Quinn Wright
certify the information shown is true and correct.

Quinn Wright
Signature of Ground Party Chief

I, Jimmie L. Brewer
certify that this Corner Record correctly represents work performed by me or under my direction in compliance with the "Corner Recordation Act" (7-20-22-10; et seq., M.C.A.)

Jimmie L. Brewer
Signature of Surveyor & Seal

Date 2-27-96 Reg. No. 7155

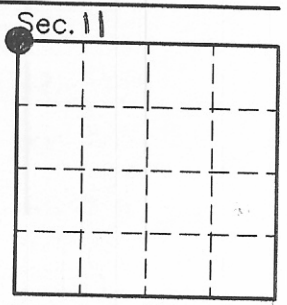
Employer: MSE-HKM, Inc.

Office of Clerk and Recorder, County of VALLEY. This "corner record" was filed for record on APRIL 18, 1997 at 4:45 P.M. was noted on the cross-index plat and is assigned page No. 495-496, in book No. 2 of CORNER RECORDS

FEE: DH

Mary Lou Eide
County Official

BY Rebecca Nequis DEPUTY
Cross Index No. E-1106 T. 28N R. 39E PMM



● corner this sheet