

1. ORIGINAL AND/OR SUBSEQUENT RECORD USED TO EVALUATE THE CORNER POSITION.
2. DESCRIPTION OF EVIDENCE FOUND, NOTE DISCREPANCIES IN THE RECORD, THE METHOD OF ESTABLISHING LOST OR OBLITERATED CORNERS.
3. DESCRIPTION OF MONUMENT AND ACCESSORIES SET TO PERPETUATE THE CORNER POSITION.
4. SKETCH OF CORNER, SHOW ALL PERTINENT DATA WHICH CAN BEST BE SHOWN IN A SKETCH. EXAMPLE, CORNER MARKINGS, TOPOGRAPHY TIES, POSITION OF ACCESSORIES, ETC.
5. CERTIFICATION MUST BE SIGNED AND SEALED BY LAND SURVEYOR REGISTERED IN THE STATE OF MONTANA.
6. FILL IN CROSS INDEX AND SECTION DIAGRAM AT BOTTOM OF SHEET.

CERTIFIED CORNER RECORDATION

CORNER Southeast SEC. 11, T. 28 N., R. 39 E., P.M.M., Valley COUNTY, MT

ORIGINAL RECORD : Surveyed by James M. Page & Rodney W. Page in Oct., 1891

Set a granite stone 12x8x6 ins., 8 ins. in the ground, for cor. of secs. 11, 12, 13 & 14, marked with 4 notches on S. and 1 notch on E. edges; dug pits 18x18x12 ins. in each sec. 5 1/2 ft. dist. and raise a mound of earth 2 ft. high, 4 1/2 base alongside. Hall's dwelling house bears N. 50.75° E.

SUBSEQUENT RECORD: Dependent Resurvey by Wm. H. Teller & Lyle F. Jones in 1946.

The corner of secs. 11, 12, 13 & 14, marked by the original monument, a granite stone, 12x8x6 ins., marked with four grooves at N. edge of yard, in Town of Glasgow. At the corner point, Set an iron post, 3 ft. long, 3 ins. diam., 45 ins. in the ground, with brass cap mkd.

T28N R39E
S 11	S 12
 S 14 | S 13
 1946

Bury the old stone at base of iron post; the corner falls in highly improved area where accessories are impractical.

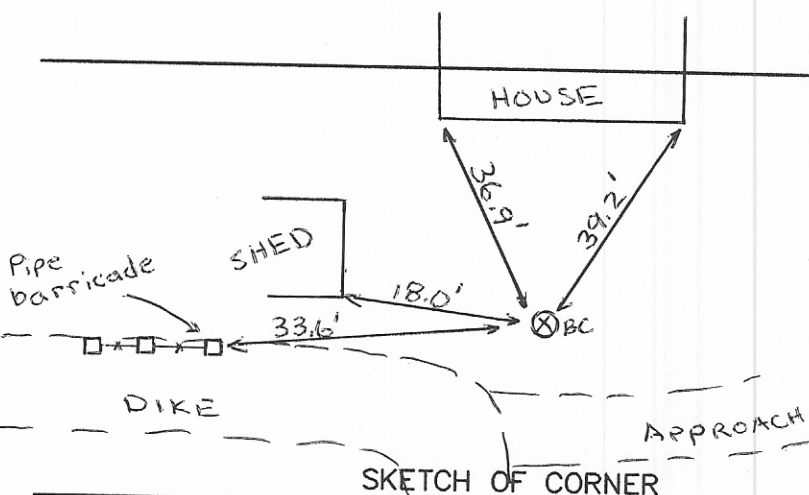
CERTIFIED LAND CORNER RECORDATION

Doc # 27626, Book 1, Page 123

Filed by D.C. Beckman, Jan. 1980, found brass cap.

EVIDENCE FOUND: Found GLO brass cap 0.6 ft. below ground at toe of dike.

SET: Monument in good condition. Set a 5 1/2 ft. galv. steel post as a witness post along the north side of found monument.



CERTIFICATION

I, Quinn Wright
 certify the information shown is true and correct.

Quinn Wright
 Signature, Ground Party, Chief

I, Jimmie L. Brewer
 certify that this corner record correctly represents work performed by me or under my direction in compliance with the "Corner Recordation Act" (20-22-104, et seq., M.C.A.)

Jimmie L. Brewer
 Signature of Surveyor & Seal

Date 09-26-96 No. 71505

Employer: MSE-HKM, Inc.

Office of Clerk and Recorder, County of VALLEY. This "corner record" was filed for record on APRIL 18, 1997 at 4:45 P.M. was noted on the cross-index plat and is assigned page No. 501-502, in book No. 2 of CORNER RECORDS

Sec. 11

FEE: DH

Mary Lou Kild
 County Official
 BY *Lynne Nyquist* DEPUTY

Cross Index No. J-21 T. 28N R. 39E PMM

● corner this sheet