

1. ORIGINAL AND/OR SUBSEQUENT RECORD USED TO EVALUATE THE CORNER POSITION.
2. DESCRIPTION OF EVIDENCE FOUND, NOTE DISCREPANCIES IN THE RECORD STATE METHOD OF ESTABLISHING LOST OR OBLITERATED CORNERS.
3. DESCRIPTION OF MONUMENT AND ACCESSORIES SET TO PERPETUATE THE CORNER POSITION.
4. SKETCH OF CORNER, SHOW ALL PERTINENT DATA WHICH CAN BEST BE SHOWN IN A SKETCH EXAMPLE, CORNER MARKINGS, TOPOGRAPHY TIES, POSITION OF ACCESSORIES, ETC.
5. CERTIFICATION MUST BE SIGNED AND SEALED BY LAND SURVEYOR REGISTERED IN THE STATE OF MONTANA.
6. FILL IN CROSS INDEX AND SECTION DIAGRAM AT BOTTOM OF SHEET.

CERTIFIED CORNER RECORDATION

CORNER North Quarter SEC. 12, T. 28 N., R. 39 E., P.M.M., Valley COUNTY, MT

ORIGINAL RECORD : Surveyed by James M. Page & Rodney W. Page in Oct., 1891
Do not have notes.

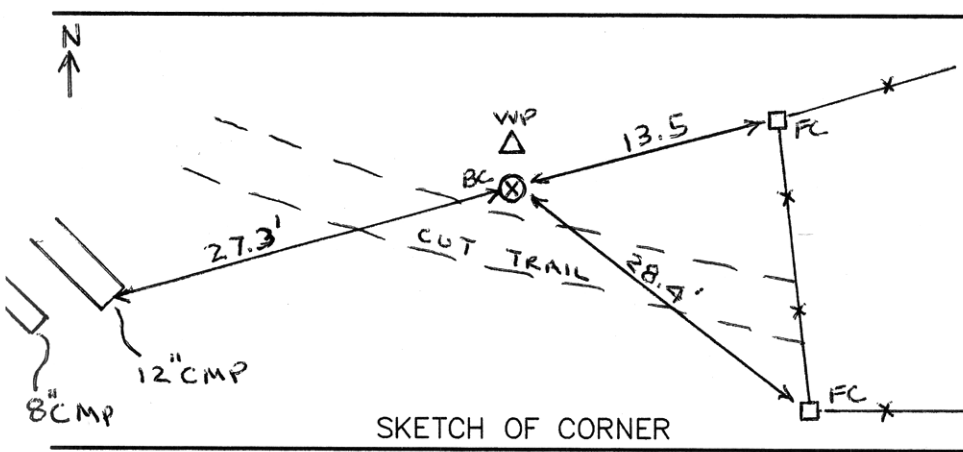
SUBSEQUENT RECORD: Dependent Resurvey by Wm. H. Teller & Lyle F. Jones in 1946.
Point for the 1/4 sec. cor. of secs. 1 and 12, at proportionate dist., falls in ravine. The original corner stone was found in the bottom of the ravine. Set an iron post, 3 ft. long, 1 in. diam., 34 ins. in the ground, with brass cap mkd.

S 1
1/4 -----
S 12
1946

Bury the old stone at the base of the iron post. From the corner, a fence corner, the SW. corner of the Glasgow Army Air Base, bears S.76°45' E., 21 lks. dist, fences bear irregularly E. and N. Raise a mound of stone, 3 ft. base, 1 1/2 ft. high, N. of corner.

EVIDENCE FOUND: Found GLO brass cap 1" above ground with a M.D.T. 5 1/2 ft galv. steel witness post 0.5 ft. north of cap.

SET: Monument in good condition. Nothing new set.



CERTIFICATION

I, Quinn Wright
certify the information shown is true and correct.
Quinn Wright
Signature, Ground Party Chief

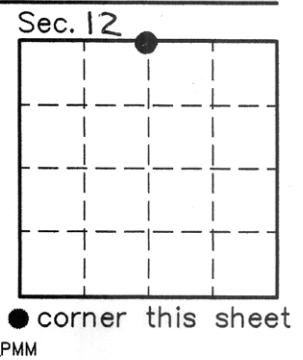
I, Jimmie L. Brewer
certify that this Corner Record correctly represents work performed by me or under my direction in compliance with the "Corner Recordation Act" (70-22-101 et seq., M.C.A.)
Jimmie L. Brewer
Signature of Surveyor & Seal

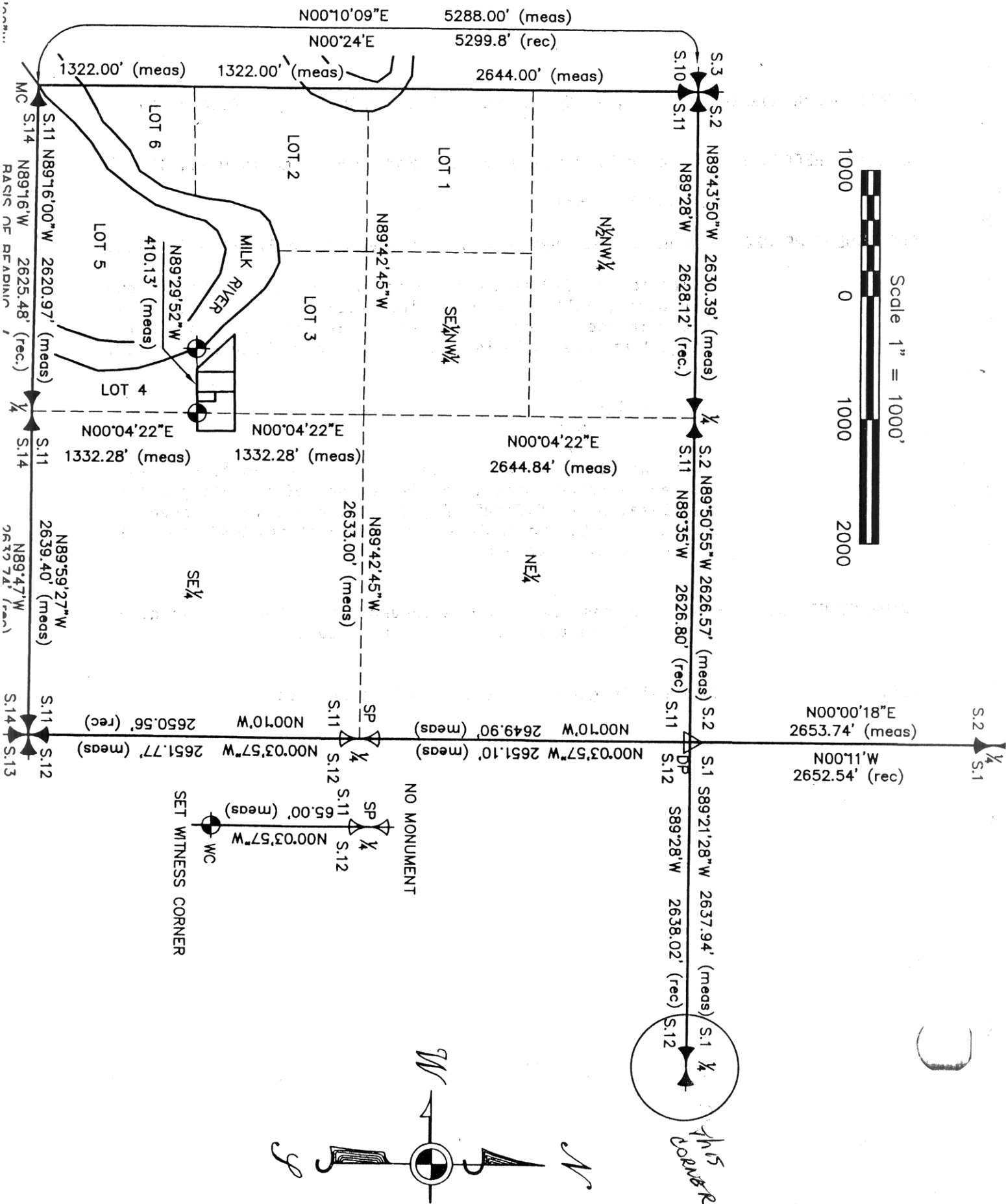
Date 8-09-97 Reg. No. 15545

Employer: MSE-HKM, Inc.

Office of Clerk and Recorder, County of VALLEY. This "corner record" was filed for record on APRIL 18, 1997 at 4:45 P.M. was noted on the cross-index plat and is assigned page No. 491-492, in book No. 2 of Corner Records

Mary Lou Eide
County Official
BY *Syrene Myquist* DEPUTY
Cross Index No. E-23 T. 28 N. R. 39 E. P.M.M.





INDEXED		
Graded	MO.	by
Graded	MO.	by
TRACTED	by	MO
PLATTED	MO.	by