

1. Original and/or subsequent record used to evaluate the corner position.
2. Description of evidence found, note discrepancies in the record, state method of establishing lost or found corners.
3. Description of monument and accessories set to perpetuate the corner position.
4. Sketch of corner, show all pertinent data which can best be shown in a sketch example, corner marking, topography ties, position of accessories, etc.
5. Certification must be signed and sealed by Land Surveyor registered in the State of Montana.
6. Fill in Cross Index & Section Diagram at bottom of sheet.

CERTIFIED CORNER RECORDATION

Corner 1/4 secs. 13 and 18 T 28 N R 39 & 40 E P.M.M. VALLEY County

1946 GLO NOTES:

"26.7 Trail road, along riverbank, enter cultivated field.

39.78 The 1/4 sec. cor. of secs. 13 and 18, marked by the original monument, a granite stone, 16x10x8 ins., firmly set, marked 1/4 on W. face. The corner is buried in cultivated field.

At the corner point,

Set an iron post, 3 ft. long, 1 in. diam., 39 ins. in the ground, with brass cap mkd.

1/4
S 13 | S 18
1946

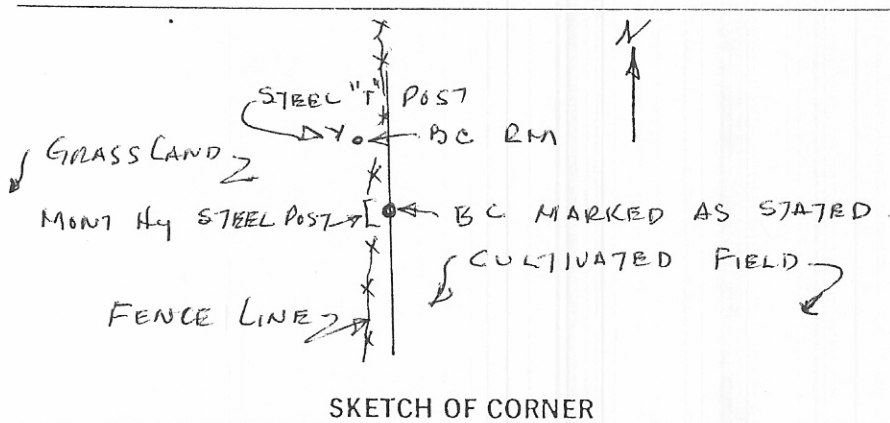
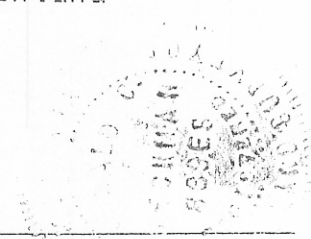
Bury the old corner stone in hole at base of iron post; set a pine post, 4 ins. square, 56 ins long, in hole alongside the corner.

CORNER RECORD BOOK 1 PAGE 586; December 1982:

The iron post marked as stated 12' above the ground, with witness or RM 1" steel post with brass cap and an arrow pointing toward the corner nearby. There were also 2 steel fence posts for guard posts near the corner. See diagram below.

Evidence found, 1987 :

I found the original 2 1/2" brass cap on a 1" iron post set with the cap 12" above the ground and marked as described in the 1946 notes above. There is a 1" steel post with 2 1/2" brass cap for a reference monument 19' northwest of the corner. It has been bent over so that it now lies level with the ground. I set a steel witness post with yellow Montana Highway Department survey marker alongside the corner.



CERTIFICATION

I, DONALD C. BECKMAN
certify the information shown herein is true and correct.
Donald C Beckman
Signature Ground Party Chief

I, DONALD C. BECKMAN
certify that this Corner Record correctly represents work performed by me or under my direction in compliance with the "Corner Recordation Act" (70-22-101, et seq., M.C.A.)
Donald C Beckman
Signature of Surveyor & Seal

Date: MAY 88 Reg. No. 889 ES
Employer: BECKMAN ENGINEERING

SKETCH OF CORNER

STATE OF MONTANA
Office of Clerk and Recorder, County of VALLEY. This "corner record" was filed for record on MAY 23rd, 1988 at 8:00 A.M.

was noted on the cross-index plat and is assigned page No. 764, in book No. 1 of Corner Records

Mary Lou Cole
County Official
Deputy

Sec. 18

FEE: DH

Cross Index No. L, 1 T. 28N R. 40E P.M.M.

• - corner this sheet