

INSTRUCTIONS

1. Original and/or subsequent record used to evaluate the corner position.
2. Description of evidence found, note discrepancies in the record, state method of establishing lost or obliterated corners.
3. Description of monument and accessories set to perpetuate the corner position.
4. Sketch of corner, show all pertinent data which can best be shown in a sketch example, corner marking, topography ties, position of accessories, etc.
5. Certification must be signed and sealed by Land Surveyor registered in the State of Montana.
6. Fill in Cross Index & Section Diagram at bottom of sheet.

CERTIFIED CORNER RECORDATION

Corner NORTHWEST SECTION CORNER SECTION 23 28N R. 40E P.M.M. VALLEY County

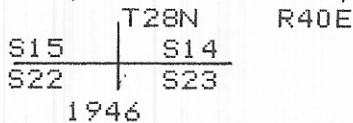
NORTHWEST SECTION CORNER OF SECTION 23

GLO RECORD:

80.46 THE CORNER OF SECS. 14, 15, 22, AND 23, MARKED BY THE ORIGINAL MONUMENT, A LIMESTONE, 20X18X16 INS. FIRMLY SET AND PROPERLY MARKED AS DESCRIBED IN THE OFFICIAL RECORD.

AT THE CORNER POINT

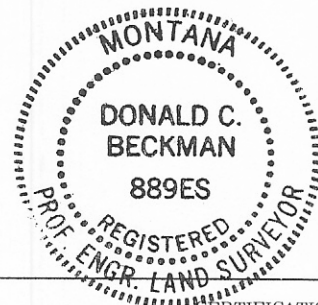
SET AN IRON POST, 3 FT. LONG, 2 INS. DIAM., 30 INS IN THE GROUND, WITH BRASS CAP MKD.



BURY THE OLD STONE IN HOLE AT BASE OF POST; RAISE A MOUND OF STONE, 2 FT BASE, 1 FT HIGH, N. OF CORNER.

EVIDENCE FOUND

THE BRASS CAP ON THE POST MARKED AS STATED ABOVE. THE STONES HAD BEEN SCATTERED. THIS CORNER LIES EAST OF THE GRADED COUNTY ROAD, AND ON A WEST SLOPE WEST OF THE POWER LINE POLE, OUT IN A PASTURE.



CERTIFICATION

I, D. C. BECKMAN
certify the information shown herein is true and correct.

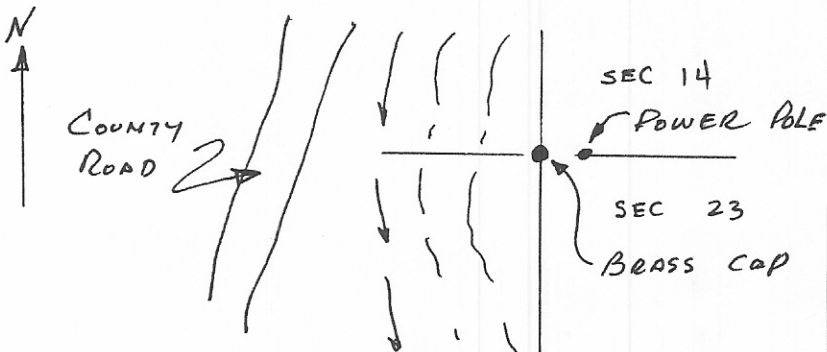
D. C. Beckman
Signature Ground Party Chief

I, D. C. BECKMAN
certify that this Corner Record correctly represents work performed by me or under my direction in compliance with the "Corner Recordation Act" (70-22-101, et seq., M.C.A.)

D. C. Beckman
Signature of Surveyor & Seal

Date: 3/25/85 Reg. No. 889 ES

Employer: owner

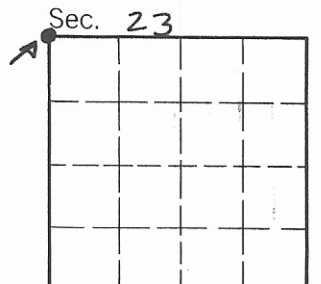


SKETCH OF CORNER

Office of Clerk and Recorder, County of VALLEY STATE OF MONTANA. This "corner record" was filed for record on MARCH 29, 1985 at 11:50 A.M.

was noted on the cross-index plat and is assigned page No. 665, in book No. 1 of Corner Recordations Mary Lou Eide County Official
FEE: DH BY Berita Bratkye Deputy

Cross Index No. N, 17 T. 28N R. 40E PMM



• - corner this sheet