

### CERTIFIED CORNER RECORDATION

Corner: West 1/4 Section 25 T. 28N R. 40E P.M.M. Valley County

**Original Record:** Unknown.

**Subsequent Record:** (GLO - 1946) The 1/4 sec. cor. of secs. 25 & 26, marked by the intersection of the centerline of graded road N & S. and well established property lines E. and W. of road, denoted by old fence lines. At the corner point,

Set a concrete block, 5 ins. square, 20 ins. long, 12 ins. below the surface of graded road, from which,

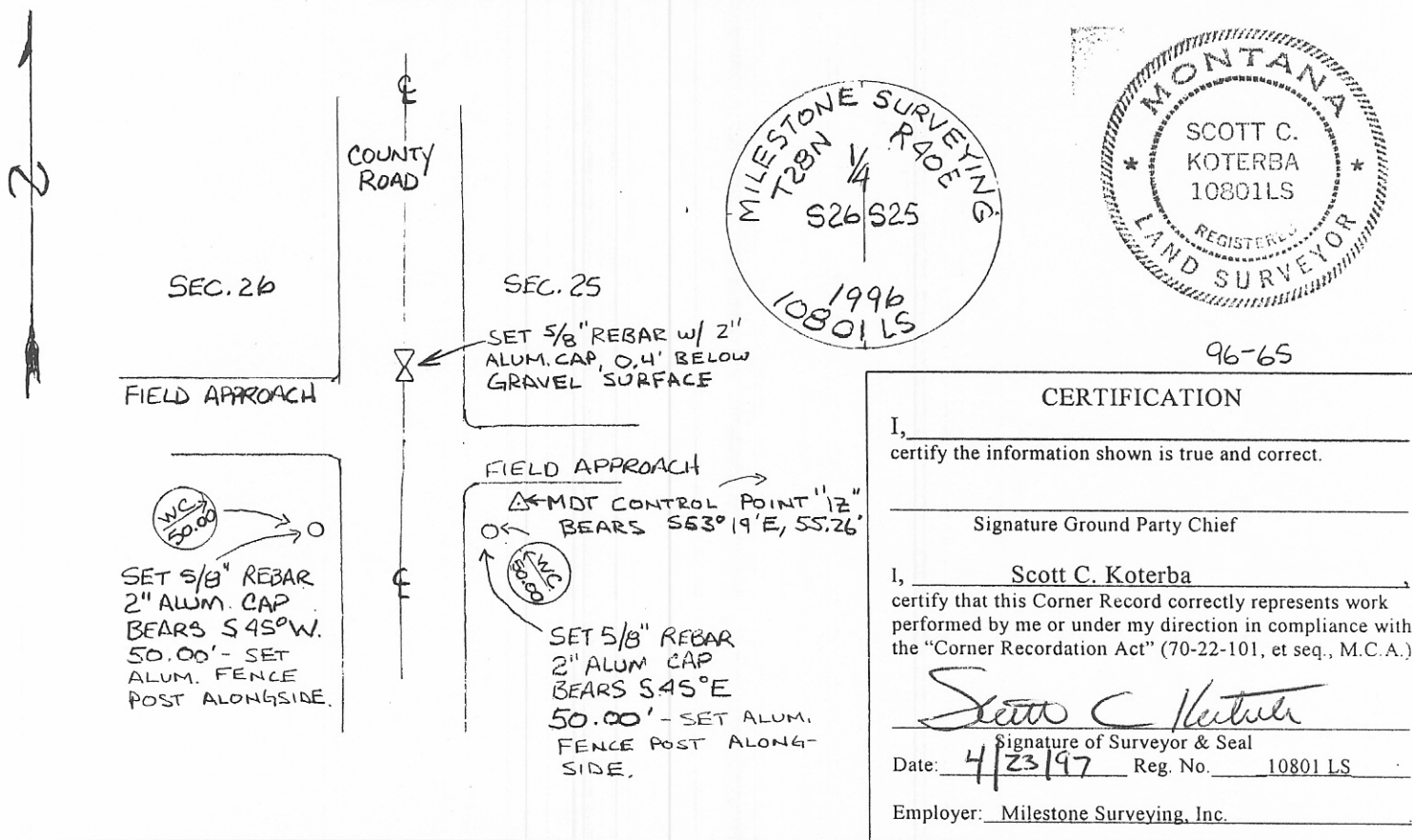
An iron post, 3 ft. long, 1 in. diam. set 34 ins. in the ground, for a reference monument bears East, 57 lks. dist., with brass cap mkd. S.26 RM 1946, and an arrow pointing toward the corner.

An iron post, 3 ft. long, 1 in. diam. set 34 ins. in the ground, for a reference monument bears West, 87 lks. dist., with brass cap mkd. S.25 RM 1946, and an arrow pointing toward the corner.

**Evidence found:** No evidence of the original monument, its accessories, or the reference monuments were found. No evidence of the "old fence line East and West" exists. Recent improvements to the North-South County Road and farming practices have destroyed all evidence of the corner.

**Perpetuation:** At the proportionate position between the closest found meander corner to the South and the Northwest corner of Section 25, set a 5/8" rebar with a 2" aluminum cap 0.4 feet below the surface of the road. Set accessories as shown below.

#### SEE ASSOCIATED CERTIFICATE OF SURVEY FOR PROPORTIONAL DISTANCES AND ADDITIONAL PERPETUATION



Office of Clerk and Recorder, County of VALLEY. This "corner record" was filed for record on APRIL 25, 1997 at 11:30 A.M. was noted on the cross-index plat and is assigned page No. 505, in book No. 2 of CORNER RECORDS.

FEE: DH

*May Lou Eide*  
County Official

Cross Index No. T-21 T. 28N R. 40E PMM

Adopted July 1, 1981, Montana Board of Professional Engineers and Land Surveyors

Sec. 25
