

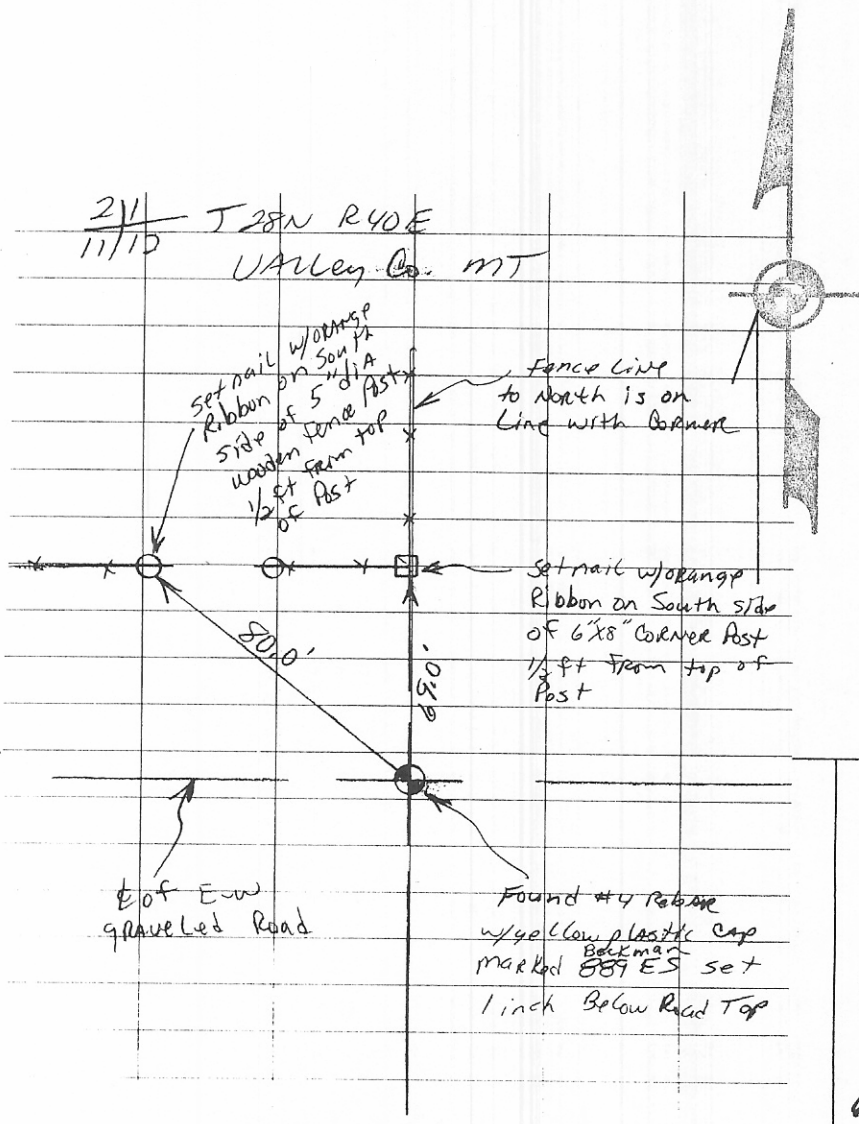
INSTRUCTIONS

1. Original and/or subsequent record used to evaluate the corner position.
2. Description of evidence found, note discrepancies in the record, state method of establishing lost or obliterated corners.
3. Description of monument and accessories set to perpetuate the corner position.
4. Sketch of corner, show all pertinent data which can best be shown in a sketch example, corner marking, topography ties, position of accessories, etc.
5. Certification must be signed and sealed by Land Surveyor registered in the State of Montana.
6. Fill in Cross Index & Section Diagram at bottom of sheet.

CERTIFIED CORNER RECORDATION

Corner NW Corner Section 12 T. 28N R. 40E P.M.M. Valley County

1. GLO 1891 - Set a granite stone 13 x 12 x 10 ins. 9 ins. in the ground for cor. to Secs. 1, 2, 11, and 12, marked with 5 notches on S. and 1 notch on E. edges, dug pits 18 x 18 x 12 ins. in each sec. 5 1/2 ft. dist. and rased a mound of earth 2 ft. high 4 1/2 ft. base alongside
2. Found - Found #4 rebar with yellow plastic cap marked Beckman 889 ES, set 1 inch below road top.
3. Set a nail with orange ribbon on South side of 6" x 8" corner post 1/2 ft. from top of post, 69.0 ft. from corner, also set a nail with orange ribbon on South side of 5" diam. wooden fence post 1/2 ft. from top of post, 80.0 ft. from corner.



CERTIFICATION
 I, Rick L Hornaday
 certify the information shown herein is true and correct.
Rick L Hornaday
 Signature Ground Party Chief
 I, Leo J. Horgan
 certify that this Corner Record correctly represents work performed by me or under my direction in compliance with the "Corner Recordation Act" (70-22-101, et seq., M.C.A.)
Leo J. Horgan
 Signature of Surveyor & Seal
 Date: 6-15-92 Reg. No. 9345S
 Employer: Ameritech Engineering

SKETCH OF CORNER

STATE OF MONTANA

Office of Clerk and Recorder, County of VALLEY. This "corner record" was filed for record on JULY 2nd, 1992 at 9:30 A.M.

was noted on the cross-index plat and is assigned page No. 39-40, in book No. 2 of CORNER RECORDS

FEE: DH

By Mary Lou Eise County Official Deputy
 Cross Index No. E-21 T. 28N R. 40E P.M.M.

