

# CERTIFIED CORNER RECORDATION

**Corner: Center Sec. 29, T.28N., R56E., P.M.M., Roosevelt County**

Original Record: No original record found for this corner.

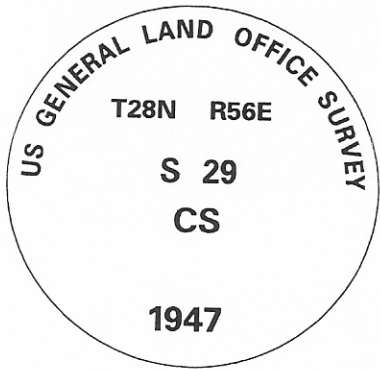
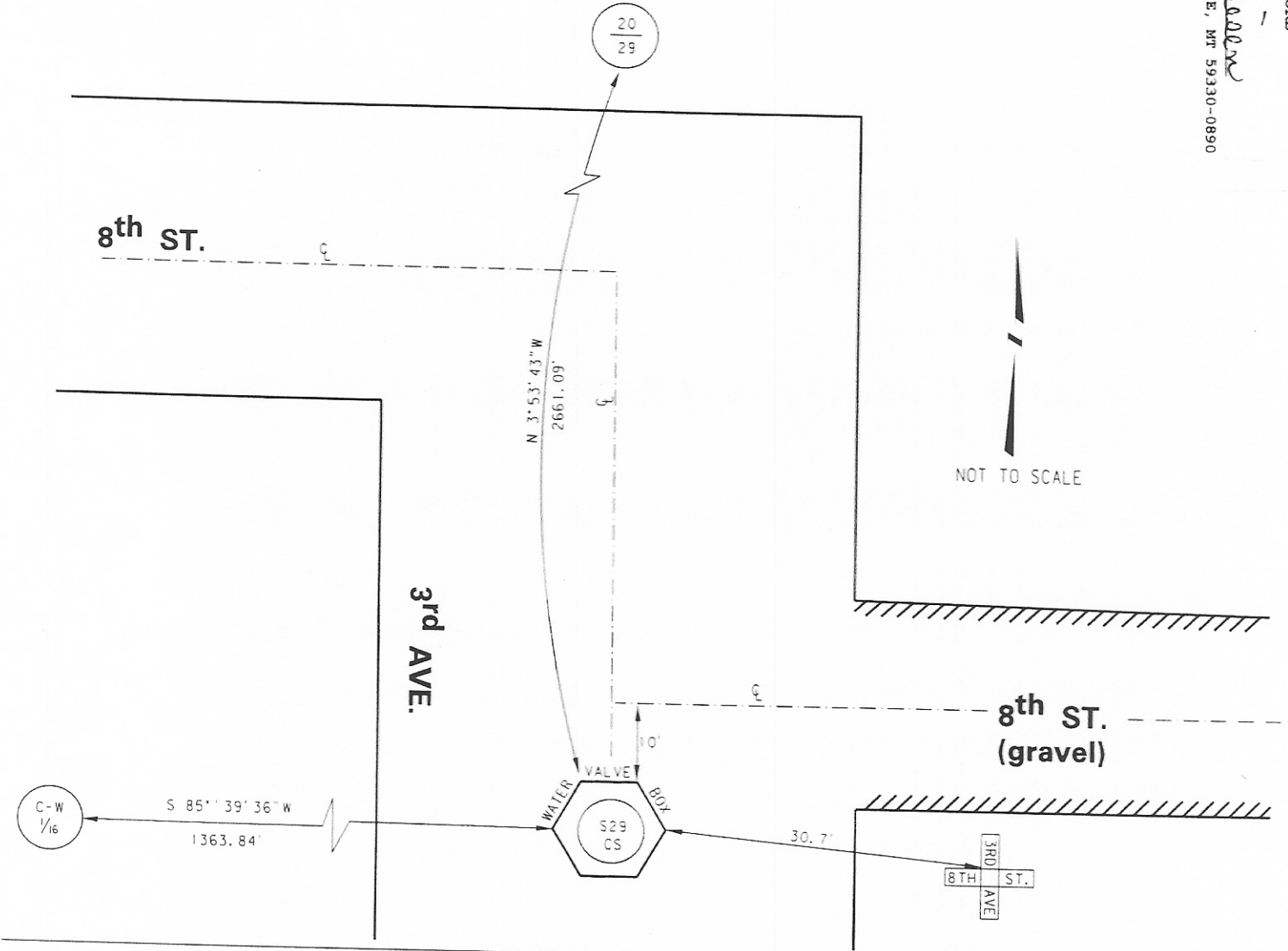
Found: In May 1993, Jimmie L Brewer, P.L.S. for HKM Associates found BLM brass cap 2" below top of pavement in water valve box that the city of Culbertson had put around the brass cap when they overlayed the street. Cap stamped as shown below. Filed a corner recordation at Roosevelt County courthouse.

Found: In August 2003, MDT Survey Crew 41-86 found brass cap just as described above.

Found: In July 2007, MDT Survey Crew 41-86 found corner as described above.

374821 COR RECORD Pages: 1  
 STATE OF MONTANA ROOSEVELT COUNTY  
 RECORDED: 08/17/2007 10:05 KOI: COR RECORD  
 Cheryl A Hansen CLERK AND RECORDER  
 FEE: \$0.00  
 BY: *Mark A. Iwaniak*  
 TO: MT DEPT OF TRANSPORTATION BOX 890, GLENDALE, MT 59330-0890

1073



**SKETCH OF CORNER**

### CERTIFICATION

I, Brent Silho certify the information shown herein is true and correct.

*Brent Silho*

Signature of Ground Party Chief

I, Mark A. Iwaniak, certify that this Corner Record correctly represents work performed by me or under my direction in compliance with the "Corner Recordation Act" (70-22-101, et seq., MCA)

*Mark A. Iwaniak*

Signature of Surveyor & Seal

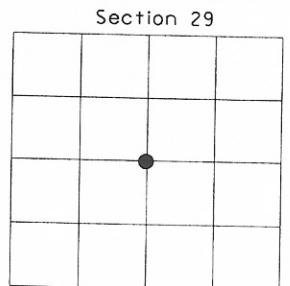
Date: 8/15/07

Registration No. #13236LS

Employer: Montana Department of Transportation

Office of Clerk and Recorder, County of \_\_\_\_\_ This "corner record" was filed for record on \_\_\_\_\_, was noted on cross-index plat, and is assigned Page No. \_\_\_\_\_, in Book No. \_\_\_\_\_

\_\_\_\_\_  
County Official



● = Corner this sheet

**Cross Index No. T-7, T. 28N., R.56E., P.M.M.**