

INSTRUCTIONS

1. Original and/or subsequent record used to evaluate the corner position.
2. Description of evidence found, note discrepancies in the record, state method of establishing lost or obliterated corners.
3. Description of monument and accessories set to perpetuate the corner position.
4. Sketch of corner, show all pertinent data which can best be shown in a sketch example, corner marking, topography (ties, position of accessories, etc.
5. Certification must be signed and sealed by Land Surveyor registered in the State of Montana.
6. Fill in Cross Index & Section Diagram at bottom of sheet.

CERTIFIED CORNER RECORDATION

CORNER South Quarter SEC. 28, T. 28 N., R. 56 E., P.M.M, Roosevelt COUNTY

ORIGINAL RECORD: Surveyed by James M. & Rodney W. Page in August 1891

SUBSEQUENT RECORD: Dependent Resurvey by William H. Teller, August 1947.

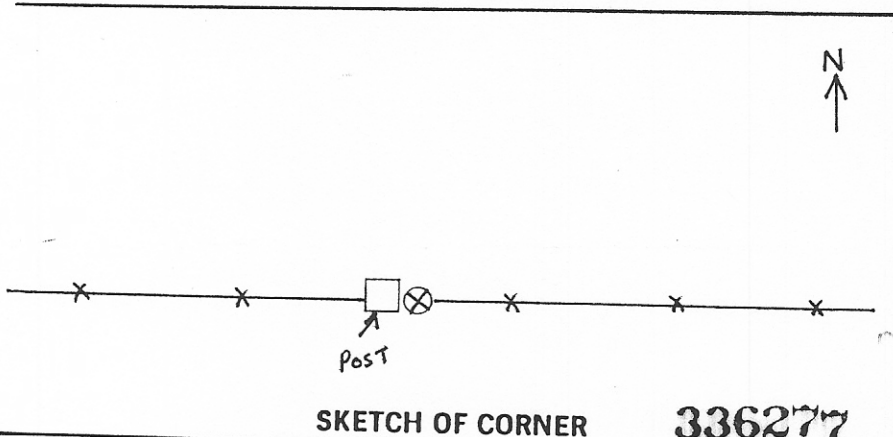
The 1/4 sec. cor. of secs. 28 and 33, marked by the original monument, a limestone, 12x8x6 ins., firmly set and properly marked as described in the official record. At the corner point,
 Set an iron post, 3 ft. long, 1 in. diam., set 34 ins. in the ground, with brass cap mkd.

S28
 1/4-----
 S33
 1947

Bury the old stone in hole alongside the iron post; raise a small mound of stone, around the corner.

FOUND: 1947 brass cap 3" above ground along the east side of a fence post in a E-W fence line.

SET: Nothing new set, monument in good condition.



CERTIFICATION

I, Quinn Wright
 certify the information given herein is true and correct.

Quinn Wright
 Signature Ground Party Chief

I, Jimmie L. Brewer
 certify that this record correctly represents work performed by me or under my direction in compliance with the "Corner Recordation Act" (70-101, et seq., M.C.A.)

Jimmie L. Brewer
 Signature of Registered Professional Land Surveyor

Date: 5-21-93 Reg. No. 7158

Employer: HKM ASSOCIATES

7-10-93 # 207

Office of Clerk and Recorder, County of Roosevelt. This "corner record" was filed for record on May 26, 1993 at 4:55 o'clock P.M.

was noted on the cross-index plat and is assigned page No. _____, in

book No. _____
 Fee D.H. _____
 HKM Associates
 215 South Lake Avenue-Box 1518
 Miles City, MT 59301

Debra R. Eggenschek
 County Official

Cross Index No. V-11 T. 28N R. 56E P.M.M

