

1086

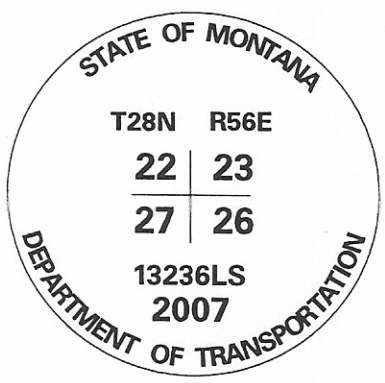
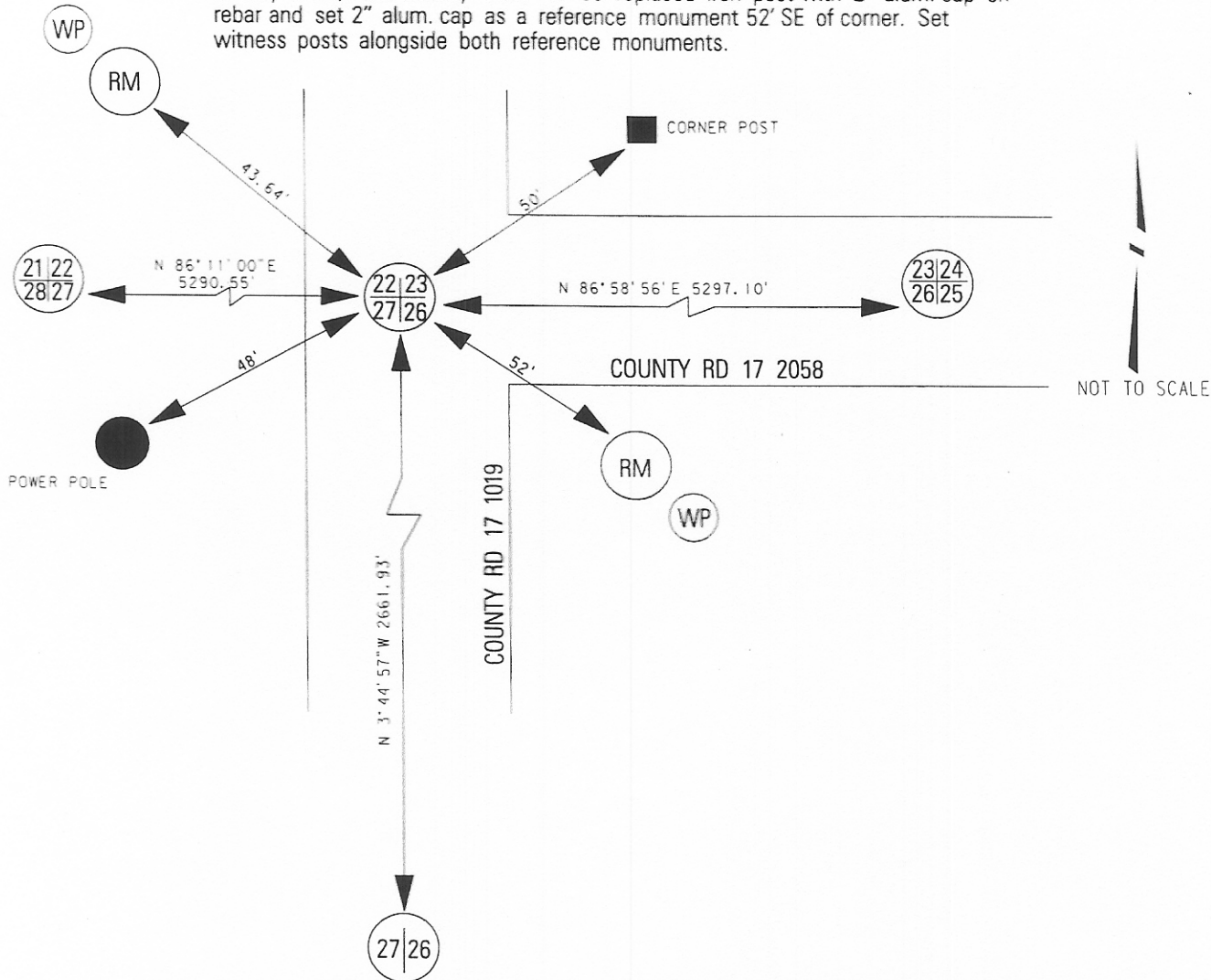
CERTIFIED CORNER RECORDATION

Corner: NW Cor. Sec. 26, T.28N., R.56E., P.M.M., Roosevelt County

Original Record: In 1947, William H. Teller set in road an iron post, 3' long, 1" diam., 48" in the ground, from which, an iron post, 3' long, 2" diam., set 34" in the ground, for a reference monument, bears S45°E, 70lks. dist., with a brass cap marked S 26 RM 1947, and an arrow pointing to the corner. An iron post, 3' long, 2" diam., set 34" in the ground, for a reference monument, bears N45°W, 70lks. dist., with a brass cap marked S 22 RM 1947, and an arrow pointing to the corner.

Found: In July 2007, MDT Survey Crew 41-86 found iron post in the intersection of county roads 17-2058 & 17-1019. Found reference monument NW of corner but not SE of corner.

Set: In July 2007, MDT Survey Crew 41-86 replaced iron post with 2" alum. cap on rebar and set 2" alum. cap as a reference monument 52' SE of corner. Set witness posts alongside both reference monuments.



SKETCH OF CORNER

CERTIFICATION

I, Brent Silha certify the information shown herein is true and correct.

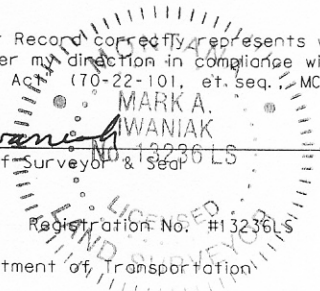
Brent Silha

Signature of Ground Party Chief

I, Mark A. Iwaniak, certify that this Corner Record correctly represents work performed by me or under my direction in compliance with the "Corner Recordation Act" (70-22-101, et. seq., MCA)

Mark A. Iwaniak

Signature of Surveyor & Seal



Date: 8/15/07

Registration No. #13236LS

Employer: Montana Department of Transportation

Office of Clerk and Recorder, County of _____, This "corner record" was filed for record on _____, was noted on cross-index plat, and is assigned Page No. _____, in Book No. _____

County Official

Section 26

●			

● = Corner this sheet