

CERTIFIED CORNER RECORDATION

Corner: N1/4 Cor. Sec. 25, T.28N., R56E., P.M.M., Roosevelt County

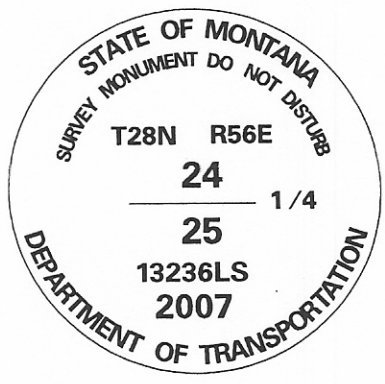
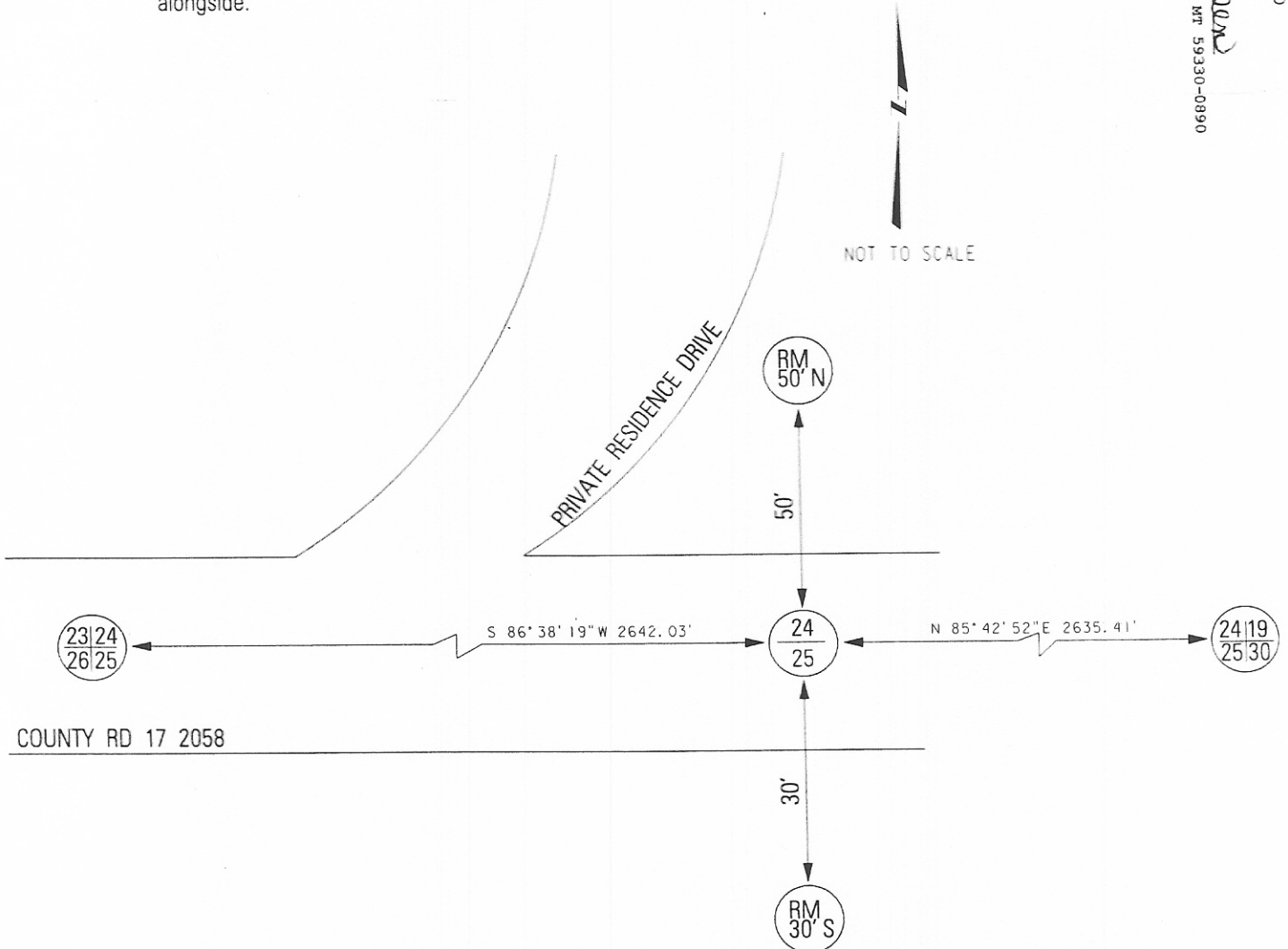
Original Record: In 1947, William Teller set an iron post, 3' long, 1" diam., 36" in the ground with brass cap marked appropriately. Bury the old stone in hole alongside iron post and build a collar of stone, 3' diam., flush with surface around corner.

Found: In July 2007, MDT Survey Crew 41-86 searched for, but did not find original monument.

Set: In July 2007, MDT Survey Crew 41-86 set an MDT 3-1/4" alum. monument at position calculated using single proportionate measurement using found corners to the east and west. Corner is 0.5' below gravel surface of county road 17 2058. I also set 2-2" alum. caps as references 30' south and 50' north with witness post alongside.

374826 COR RECORD Pages: 1
 STATE OF MONTANA ROOSEVELT COUNTY
 RECORDED: 08/17/2007 10:05 KOI: COR RECORD
 Cheryl A Hansen CLERK AND RECORDER
 FEE: \$0.00
 BY: *Mark A. Iwaniak*
 TO: MT DEPT OF TRANSPORTATION BOX 890, GLENDALE, MT 59330-0890

1078



SKETCH OF CORNER

CERTIFICATION

I, Brent Silho
 certify the information shown herein is true and correct.

Brent Silho
 Signature of Ground Party Chief

I, Mark A. Iwaniak,
 certify that this Corner Record correctly represents work performed by me or under my direction in compliance with the "Corner Recordation Act" (70-221, MCA) at seq. MCA)

Mark A. Iwaniak
 Signature of Surveyor & Seal

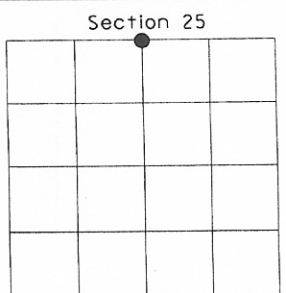
Date: 8/15/07

Registration No. #13236LS

Employer: Montana Department of Transportation

Office of Clerk and Recorder, County of _____, This "corner record" was filed for record on _____, was noted on cross-index plat, and is assigned Page No. _____, in Book No. _____

 County Official



● = Corner this sheet