

INSTRUCTIONS

1. Original and/or subsequent record used to evaluate the corner position.
2. Description of evidence found, note discrepancies in the record, state method of establishing lost or obliterated corners.
3. Description of monument and accessories set to perpetuate the corner position.
4. Sketch of corner, show all pertinent data which can best be shown in a sketch example, corner marking, topography ties, position of accessories, etc.
5. Certification must be signed and sealed by Land Surveyor registered in the State of Montana.
6. Fill in Cross Index & Section Diagram at bottom of sheet.

CERTIFIED CORNER RECORDATION

Corner Sections 13, 18, 19 & 24 T. 29 N. R. 38 & 39 E. P.M.M. Valley County

ORIGINAL RECORD: (1891 G.L.O.) Set a lime stone 18x12x6 ins., 12 ins. in the ground for cor. to secs. 13, 18, 19 and 24 marked with 3 notches on N. & S. edges and raised a mound of stone 2 ft. high, 3 ft. base alongside.

SUBSEQUENT RECORD: (1946 G.L.O.) The cor. of secs. 13, 18, 19 and 24, marked by the original monument, a granite stone, 18x14x10 ins., firmly set in a mound of stone, marks illegible. This corner is at the extension of graded road in lane, and property line to N. of lane, as denoted by fence. At the corner point set an iron post, 3 ft. long, 2 ins. diam., 26 ins. in the ground, with brass cap mkd. as shown. Raise a mound of stone. 3 ft. base, 1 1/2 ft. high., around the post, and bury the old corner stone alongside the post.

EVIDENCE FOUND: Found a 3-1/2" brass cap, 1 in. above ground with 3x3 ft. mound of large stones on west.

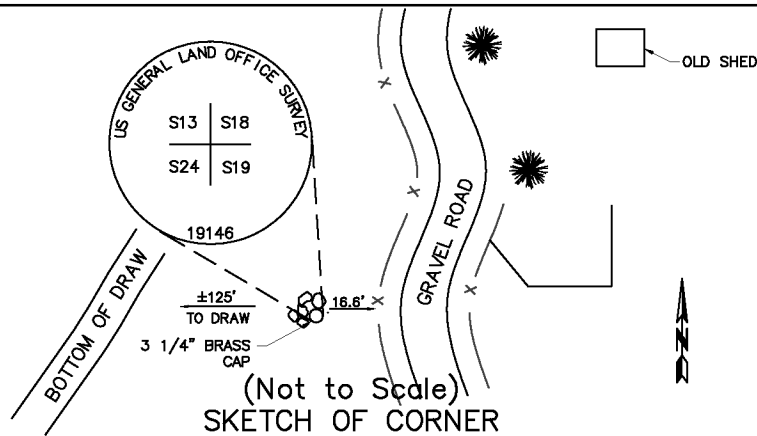
PERPETUATION: Established a latitude and longitude for search purposes.

Date of Survey: June, 2008.



VIEW LOOKING NORTH

NAD 83 coordinates for this corner:
 Latitude = 48°15'46.53608"N Longitude = 106°42'55.77239"W
 NOTE: These coordinates are to be used as a search tool only.



CERTIFICATION

I, Steve Cummings
 certify the information shown herein is true and correct.

 Signature Ground Party Chief

I, Kurt A. Luebke
 certify that this Corner Record correctly represents work performed by me or under my direction in compliance with the "Corner Recordation Act" (70-22-101, et seq., M.C.A.)

 Signature of Surveyor & Seal

Date: 7-6-2008 Reg. No. 13237 S

Employer: DJ&A P. C.

Office of Clerk and Recorder, County of Valley. This "corner record" was filed for record on _____ was noted on the cross index plat and is assigned page No. _____, in book No. _____

County Official

Cross Index No. N-1 T. 29 N. R. 39 E. PMM
 Cross Index No. N-25 T. 29 N. R. 38 E. PMM

Sec. 13

● - corner this sheet