

3. Description of monument and accessories set to perpetuate the corner position.
 4. Sketch of corner, show all pertinent data which can best be shown in a sketch example, corner map, map ties, position of accessories, etc.
 5. Certification must be signed and sealed by Land Surveyor registered in the State of Montana.
 6. Fill in Cross Index & Section Diagram at bottom of sheet.

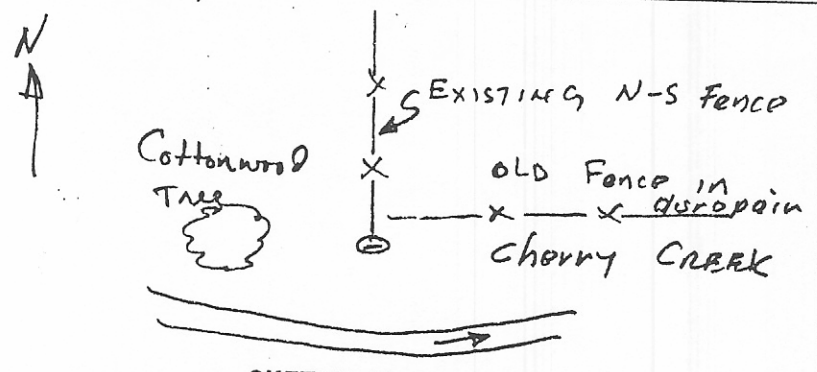
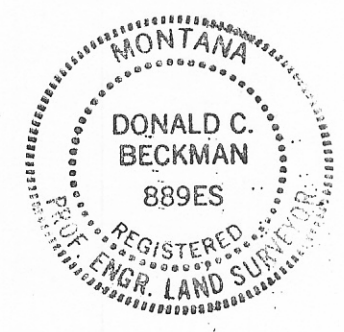
CERTIFIED CORNER RECORDATION

Corner S 1/4 COR, SEC. 27 T. 29 N R. 39 E P.M.M. VALLEY County
 GLO RECORD

34.00	Secondary trail road, N. and S.
34.80	Drain in Cherry Creek, on meander E. to S.; along drain.
36.00	Same drain, course N.S. and E.; over brushy bottom.
40.16	The 1/4 sec. cor. of secs. 27 and 34, marked by the remains of the original monument, a rotted wooden post, from which the original bearing tree: A cottonwood 35 ins. diam., bears N. 61 1/2° W., 108 lks. dist., as described in the official record. At the cor point. Set an iron post, 3 ft. long, 1 in. diam., 30 ins. in the ground, with brass cap pkd. <div style="text-align: center;"> $\frac{S\ 27}{S\ 34}$ 1946 </div> Bury a brown glass bottle at the base of the iron post; the markings on the old bearing tree are not disturbed. S. 89° 54' W., beginning new measurement. Over brushy bottom land.
1.30	Drain in Cherry Creek, course S. to S. 70° E.
2.00	Over grassy golf course.

EVIDENCE FOUND:

The brass cap monument in place per GLO notes.



CERTIFICATION
 I, D.C. BECKMAN
 certify the information shown herein is true and correct.
D.C. Beckman
 Signature Ground Party Chief
 I, D.C. BECKMAN
 certify that this Corner Record correctly represents work performed by me or under my direction in compliance with the "Corner Recordation Act" (70-22-101, et seq., M.C.A.)
D.C. Beckman
 Signature of Surveyor & Seal
 Date: 5-8-86 Reg. No. 889 ES
 Employer: BECKMAN ENGINEERING

Office of Clerk and Recorder, County of _____ . This "corner record" was filed for record on _____ was noted on the cross-index plat and is assigned page No. _____, in book No. _____

County Official _____
 Cross Index No. V 15 T. 29 N R. 39 E P.M.M.

Sec. 27

• - corner this sheet