

INSTRUCTIONS

1. On / and/or subsequent record used to evaluate the corner position.
2. Description of evidence found, note discrepancies in the record, state method of establishing lost or obliterated corners.
3. Description of monument and accessories set to perpetuate the corner position.
4. Sketch or corner, show all pertinent data which can best be shown in a sketch example, corner marking, topography ties, position of accessories, etc.
5. Certification must be signed and sealed by Registered Land Surveyor in State of Montana.
6. Fill in Cross Index & Section Diagram at bottom of sheet.

CERTIFIED CORNER RECORDATION

Corner Southeast Sec. Cor. Sec. ²⁶ T. 29N R. 39E P.M.M. Valley County

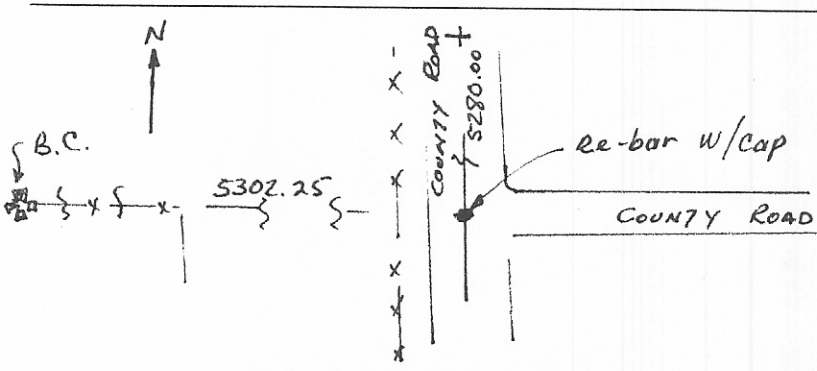
GLO RECORD:

80.00 ch. Set a sandstone 15x8x5 ins. 10 ins. in the ground for cor. to sec. 25, 26, 35, and 36, marked with 1 notch on S and E edges. Dug pits 18x18x12 ins. in each sec. 5 1/2 ft. dist. and raised a mound of earth 2 ft high, 4 1/2 ft. base alongside.

EVIDENCE FOUND:

The construction of the road, and other farming activities have long ago removed evidence of the pits, mounds, and probably even the stone. We could find no stone as the corner fell in the centerline of a N-S road, and at the juncture of an E-W road. We established the corner on the basis of record bearings and distances, relationship of fences of long time standing, the adjacent airport survey to the South, and the use lines. County records do not give a tie for the corner.

At the cor. point set a 1/2" x 24" steel re-bar 3" below the surface of the county road, with plastic cap 889 ES DCB.



CERTIFICATION

I, D. C. Beckman
certify the information shown herein is true and correct.

D. C. Beckman
Signature Ground Party Chief

I, D. C. Beckman
certify that this Corner Record correctly represents work performed by me or under my direction in compliance with the "Corner Recordation Act" (70-22-101, et seq., M.D.A.)

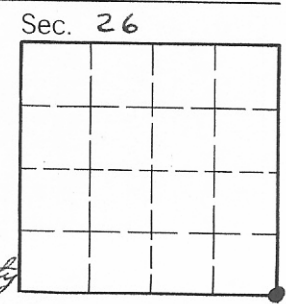
889ES D. C. Beckman
Signature of Surveyor & Seal

Date 4-14-81 Reg. No. 889 ES

Employer: _____

SKETCH OF CORNER

STATE OF MONTANA
Office of Clerk and Recorder, County of VALLEY. This "corner record" was filed for record on the May 5th ~~XXXX~~ day of 1981 at 11:50 A.M. in LAND CORNER RECORDS. was noted on the cross-index plat and is assigned page No. 297, in book No. 1



FEE: \$1.50 Pd.

Mary Lou Cide
County Official
Mary Lou Cide, Deputy

Cross Index No. V, 21 T. 29N R. 39E P.M.M.

• - corner this sheet