

INSTRUCTIONS

1. On all and/or subsequent record used to evaluate the corner position.
2. Description of evidence found, note discrepancies in the record, state method of establishing lost or obliterated corners.
3. Description of monument and accessories set to perpetuate the corner position.
4. Sketch or corner, show all pertinent data which can best be shown in a sketch example, corner marking, topography ties, position of accessories, etc.
5. Certification must be signed and sealed by Registered Land Surveyor in State of Montana.
6. Fill in Cross Index & Section Diagram at bottom of sheet.

CERTIFIED CORNER RECORDATION

Corner Northeast Sec. Cor Sec. 26 T. 29N R. 39E P.M.M. Valley County

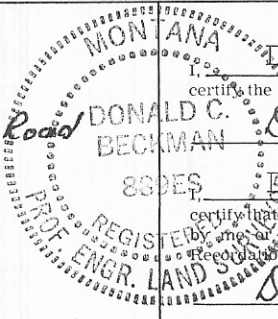
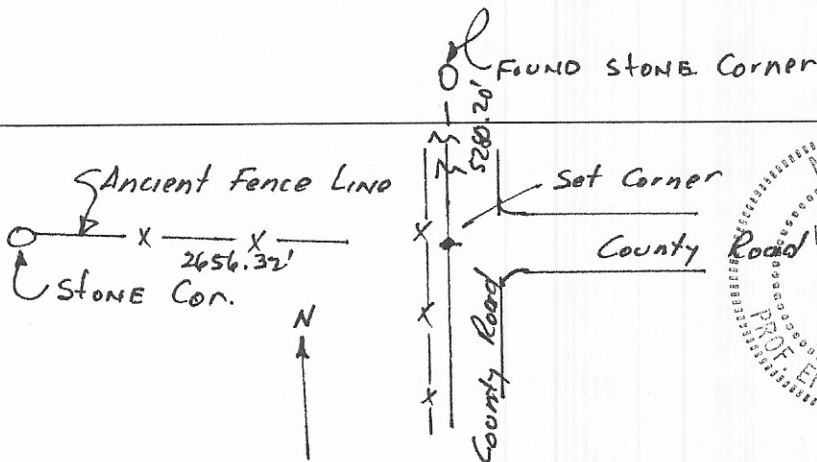
GLO RECORD:

80.00 ch. Set a sandstone 18x10x10 ins. 12 ins. in the ground for cor. to secs. 23,24,25 and 26, marked with 2 notches on S and 1 notch on E edges. Dug pits 18x18x12 ins. in each sec. 5 1/2 ft dist. and raised a mound of earth 2ft high 4 1/2 ft base alongside.

EVIDENCE FOUND:

None of the above, as the corner falls in the approximate centerline of the county road. County records do not afford a tie for the corner either. Established the corner by reference to the found original stone corner 5280.20 ft to the North, and the use lines, fences, county road to the east, and ancient fence line to the West.

Set a 1/2" x 24" long steel re-bar 3" below the surface of the road with the plastic identification cap 889ES DCB. at the cor point.



CERTIFICATION
 I, D. C. Beckman
 certify the information shown herein is true and correct.
D. C. Beckman
 Signature Ground Party Chief
D. C. Beckman
 certify that this Corner Record correctly represents work performed
 by me or under my direction in compliance with the "Corner
 Recordation Act" (70-22-101, et seq., M.D.A.)
D. C. Beckman
 Signature of Surveyor & Seal
 Date: 4 Apr 81 Reg. No. 889 ES
 Employer: _____

SKETCH OF CORNER

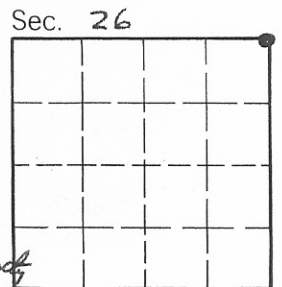
STATE OF MONTANA

Office of Clerk and Recorder, County of VALLEY. This "corner record" was filed for record on the 5th day of May 1981 at 11:50 A.M. in Corner Recordations was noted on the cross-index plat and is assigned page No. 296, in book No. 1

FEE: \$1.50 Pd.

Mary Lou Eide
County Official
Mary Lou Eide, Deputy

Cross Index No. R, 21 T. 29N R. 39E P.M.M.



• - corner this sheet