

1. Original and/or subsequent record used to evaluate the corner position.
2. Description of evidence found, note discrepancies in the record, state method of establishing lost or obliterated corners.
3. Description of monument and accessories set to perpetuate the corner position.
4. Sketch or corner, show all pertinent data which can best be shown in a sketch example, corner marking, topography ties, position of accessories, etc.
5. Certification must be signed and sealed by Registered Land Surveyor in State of Montana.
6. Fill in Cross Index & Section Diagram at bottom of sheet.

CERTIFIED CORNER RECORDATION

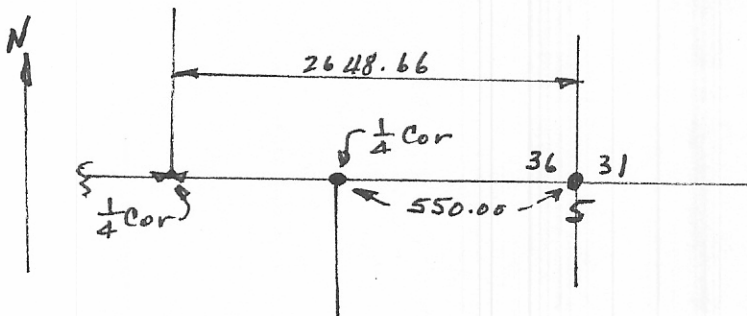
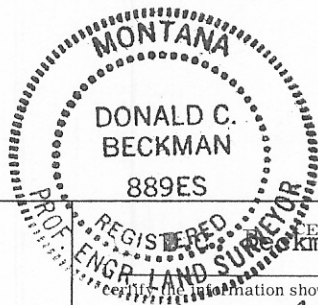
Corner SE Sec. Cor. Sec 36 T. 29N R. 39E P.M.M. Valley County

GLO RECORD:

80.00 Set a granite stone 14x11x10 ins. 10 ins. in the ground for standard corner to Tps 29, R39E and 40 E, marked SC with 6 notches on N, E, & W faces, dug pits 24x18x12 ins. Crosswise on each line N, E, & W of stone, 6 ft distance and raised a mound of earth 2½ ft high 5 ft base alongside.

EVIDENCE FOUND:

Unable to find stone, pits or other indications given in the 1891 survey. It should be noted the 1946 dependent survey did not reach this corner. At intersection of E-W county road with N-S road in centerline of road at proportionate distance (agrees with record distance and bearing) set a ½" x 24" re bar with cap 6" below surface of road. This point is also on the seventh parallel north, and is consistent with other established lines E-W, N-S, and the record notes.



SKETCH OF CORNER

I, Donald C. Beckman certify that the information shown herein is true and correct.

D.C. Beckman
Signature Ground Party Chief
D.C. Beckman

I, D.C. Beckman certify that this Corner Record correctly represents work performed by me or under my direction in compliance with the "Corner Recordation Act" (70-22-101, et seq., M.D.A.)

D.C. Beckman
Signature of Surveyor & Seal
Date: Dec 82 Reg. No. 889ES

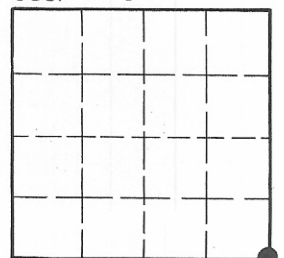
Employer: _____

STATE OF MONTANA
Office of Clerk and Recorder, County of VALLEY. This "corner record" was filed for record on the DEC 20 1982 day of 19, at 10:30 A.M. was noted on the cross-index plat and is assigned page No. 551, in book No. 1 of CORNER RECORDATIONS

FEE: DH

By Mary Lou Esde County Official Deputy
Cross Index No. 2 25 T. 29N R. 39E P.M.M.

Sec. 36



• - corner this sheet