

CERTIFIED LAND CORNER RECORDATION

Corner NW Corner Section 31 T. 29 N, R. 40 E, P.M.M.

G.L.O. Record

80.00 ch. Set a granite stone 12x10x5 ins. 8 ins. in the ground for corner to section 25,30,31 and 36. Marked with 1 notch on s. and 5 notches on N edges. Dug pits 18x18x12 ins. in each section 5 1/2 ft. and raised a mound of earth 2 ft. high 4 1/2 ft. base alongside.

Evidence Found

Stone set as described in intersection of road N-S and W. Set a 1/2" re-bar with alum. cap "Beckman Engineering"889 ES alongside.

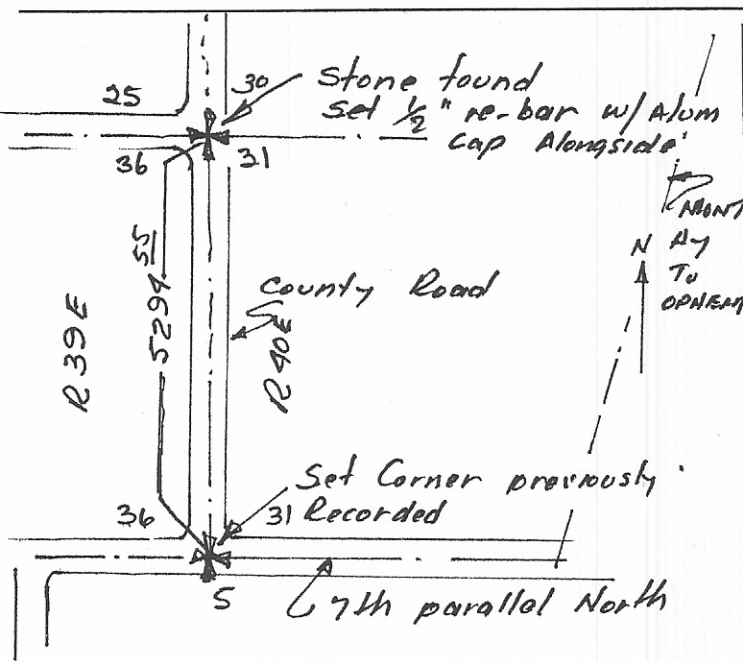


DIAGRAM OF CORNER

I, D. C. Beckman certify that the information shown herein is true and correct.

C. Beckman
Signature of Ground Party Chief

DONALD C. C. Beckman
certify that I have carefully performed or reviewed the work done on the diagrammed corner as reported on this recordation and approve the same.

C. Beckman
Signature of Surveyor

6 November 81 Date 889 ES Registration Number

STATE OF MONTANA
Office of Clerk and Recorder, County of VALLEY

This "corner record" was filed for record on the 6th day of NOVEMBER 19 81 at 3:40 P.M. and is assigned page No. 454 in book No. 1 of Corner Recordations

Mary Lou Eide
County Official
By Bertha E. Dreyfus Deputy

Cross Index No. 1, V T. 29N R. 40E P.M.M. Mer.