

INSTRUCTIONS

1. Original and/or subsequent record used to evaluate the corner position.
2. Description of evidence found, note discrepancies in the record, state method of establishing lost or obliterated corners.
3. Description of monument and accessories set to perpetuate the corner position.
4. Sketch of corner, show all pertinent data which can best be shown in a sketch example, corner marking, topography ties, position of accessories, etc.
5. Certification must be signed and sealed by Land Surveyor registered in the State of Montana.
6. Fill in Cross Index & Section Diagram at bottom of sheet.

CERTIFIED CORNER RECORDATION

Corner Sections 27, 28, 33 & 34 T. 30N R. 29E P.M.M. Phillips County

ORIGINAL RECORD: (1893 G.L.O.) Set a sand stone 16x12x5 ins., 11 ins. in the ground for cor. to secs. 27, 28, 33 & 34 marked with 1 notch on S. and 3 notches on E. edges; dug pits 18x18x12 ins. in each sec. 5 1/2 ft. dist and raised a mound of earth 1 1/2 ft. high 3 1/2 ft. base alongside.

SUBSEQUENT RECORD: None found.

EVIDENCE FOUND: Found a set pink granite stone underneath "T" fence corner. Stone is 11x10x10 ins. high. There is 1 hashmark on the south edge and 3 on the east edge. The fence corner post at the south edge of the stone.

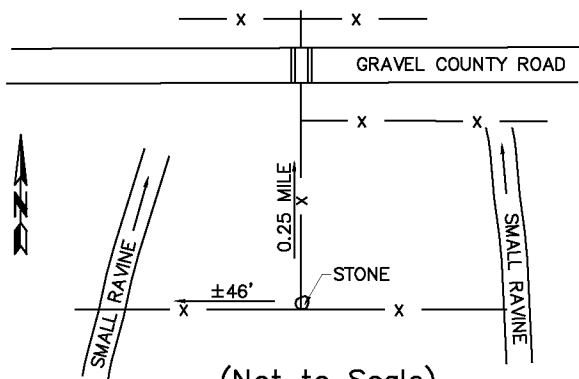
PERPETUATION: Established a latitude and longitude for search purposes.

Date of Survey: June, 2008.

NAD 83 coordinates for this corner:
 Latitude = 48°19'18.30333"N Longitude = 107°57'15.10445"W
 NOTE: These coordinates are to be used as a search tool only.



VIEW LOOKING NORTH



CERTIFICATION

I, Steve Cummings
 certify the information shown herein is true and correct.

 Signature Ground Party Chief

I, Kurt A. Luebke
 certify that this Corner Record correctly represents work performed by me or under my direction in compliance with the "Corner Recordation Act" (70-22-101, et seq., M.C.A.)

 Signature of Surveyor & Seal

Date: 7-6-2008 Reg. No. 13237 S

Employer: DJ&A P. C.

Office of Clerk and Recorder, County of Phillips. This "corner record" was filed for record on _____ was noted on the cross index plat and is assigned page No. _____, in book No. _____

 County Official

Sec. 28

● - corner this sheet

Cross Index No. V-13 T. 30 N. R. 29 E. PMM