

CERTIFIED CORNER RECORDATION

Corner E 1/4 SECTION 26 T. 30N R. 29E P.M.M. PHILLIPS County

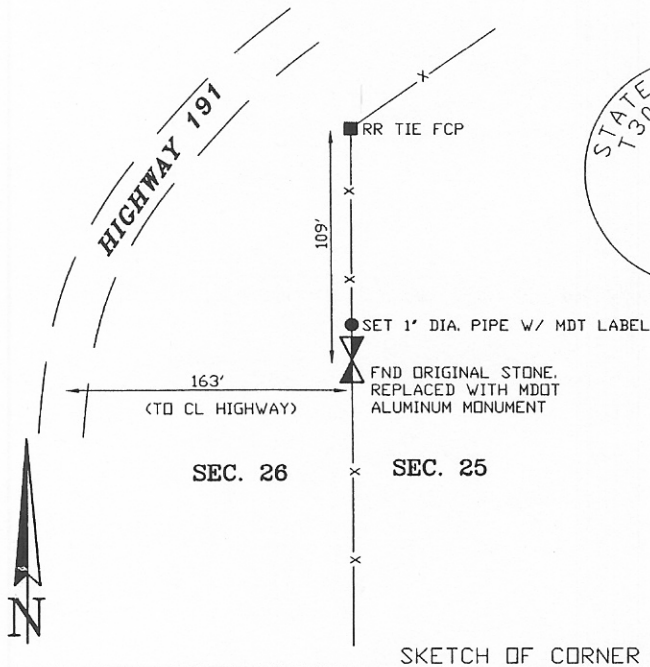
ORIGINAL RECORD: (Page & Page, 1891) Set a granite stone 12 x 12 x 8 ins., 8 ins. in the ground for 1/4 Section corner, marked 1/4 on West face; dug pits 18 x 18 x 12 ins. North and South of stone 5 1/2 ft distant and raised a mound of earth 1 1/2 ft. high 3 1/2 base alongside.

SUBSEQUENT RECORD: This corner is shown as found on 2 different recorded surveys, but neither indicate what was found or set.

EVIDENCE FOUND: Found original stone (12" x 11" x 6") clearly marked with "1/4" on West face and firmly set 2" above ground.

PERPETUATION: Replaced original stone with a Montana Department of Transportation aluminum monument. Set a 1" dia. pipe, 3 ft. long, 3 ft. North of corner with MDT sticker attached. Raised collar of stone.

SEE ASSOCIATED CERTIFICATE OF SURVEY



03-558 MP154

CERTIFICATION

I, _____ certify the information shown herein is true and correct.

Signature Ground Party Chief

Scott C. Koterba

I, _____ certify that this Corner Record correctly represents work performed by me or under my direction in compliance with the Corner Recordation Act (70-22-10), et seq., MCA.

Scott C. Koterba
Signature of Surveyor & Seal

Date: 4/29/04 Reg. No. 10801 LS

Employer: Milestone Surveying

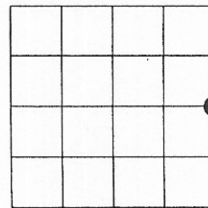
SKETCH OF CORNER

Office of Clerk and Recorder 330404 B-CR P-0847
 record' was filed for record PHILLIPS COUNTY MONTANA Fee \$.00
 was noted on the cross-index Filed 05/04/2004 At 04:39 PM
 book No. _____ Laurel N Hines, Clerk and Recorder
 By *Suzanne M. Hines*, Deputy

County Official

Cross Index No. T21 T. 30N R. 29E PMM

Sec. 26



• corner this sheet