

INSTRUCTIONS

1. Original and/or subsequent record used to evaluate the corner position.
2. Description of evidence found, note discrepancies in the record, state method of establishing lost or obliterated corners.
3. Description of monument and accessories set to perpetuate the corner position.
4. Sketch of corner, show all pertinent data which can best be shown in a sketch example, corner marking, topography ties, position of accessories, etc.
5. Certification must be signed and sealed by Land Surveyor registered in the State of Montana.
6. Fill in Cross Index & Section Diagram at bottom of sheet.

CERTIFIED CORNER RECORDATION

Corner Sections 7, 12, 13 & 18 T. 30 N R. 29 & 30 E P.M.M. Phillips County

ORIGINAL RECORD: (1892 G.L.O.) Set a granite stone 12x10x8 ins., 8 ins. in the ground for the corner to sections 7, 12, 13 and 18, marked with 2 notches on N. and 4 notches on S. edges, dug pits 18x18x12 ins. in each sec. 5 1/2 ft. dist. and raised a mound of earth 2 ft. high 4 1/2 ft. base alongside.

SUBSEQUENT RECORD: None found.

EVIDENCE FOUND: Found a 3-1/4" aluminium cap, 6 ins. below gravel road surface. The corner falls near centerline of east-west main road and on west edge of approach road to north to power pole is 36.1 ft. at N47°W.

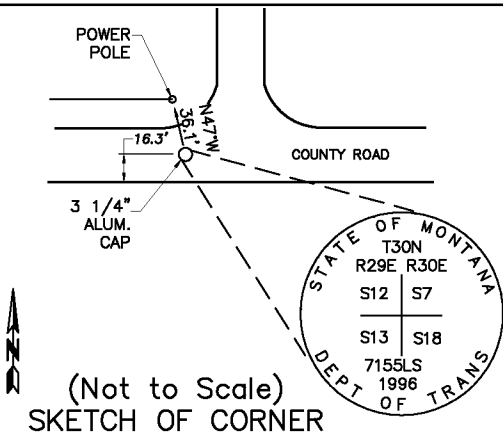
PERPETUATION: Established a latitude and longitude for search purposes.

Date of Survey: June, 2008.



VIEW LOOKING NORTH

NAD 83 coordinates for this corner:
 Latitude = 48°21'56.67744"N Longitude = 107°53'18.88583"W
 NOTE: These coordinates are to be used as a search tool only.



CERTIFICATION
 I, Steve Cummings
 certify the information shown herein is true and correct.

 Signature Ground Party Chief

I, Kurt A. Luebke
 certify that this Corner Record correctly represents work performed by me or under my direction in compliance with the "Corner Recordation Act" (70-22-101, et seq., M.C.A.)

 Signature of Surveyor & Seal

Date: 7-6-2008 Reg. No. 13237 S

Employer: DJ&A P. C.

Office of Clerk and Recorder, County of Phillips. This "corner record" was filed for record on _____ was noted on the cross index plat and is assigned page No. _____, in book No. _____

Sec. 12

County Official

Cross Index No. J-1 T. 30 N. R. 30 E. PMM
 Cross Index No. J-25 T. 30 N. R. 29 E. PMM

• - corner this sheet