

CR #219

INSTRUCTIONS

1. Original and/or subsequent record used to evaluate the corner position.
2. Description of evidence found, note discrepancies in the record, state method of establishing lost or obliterated corners.
3. Description of monument and accessories set to perpetuate the corner position.
4. Sketch of corner, show all pertinent data which can best be shown in a sketch example, corner marking, topography ties, position of accessories, etc.
5. Certification must be signed and sealed by Land Surveyor registered in the State of Montana.
6. Fill in Cross Index & Section Diagram at bottom of sheet.

CERTIFIED CORNER RECORDATION

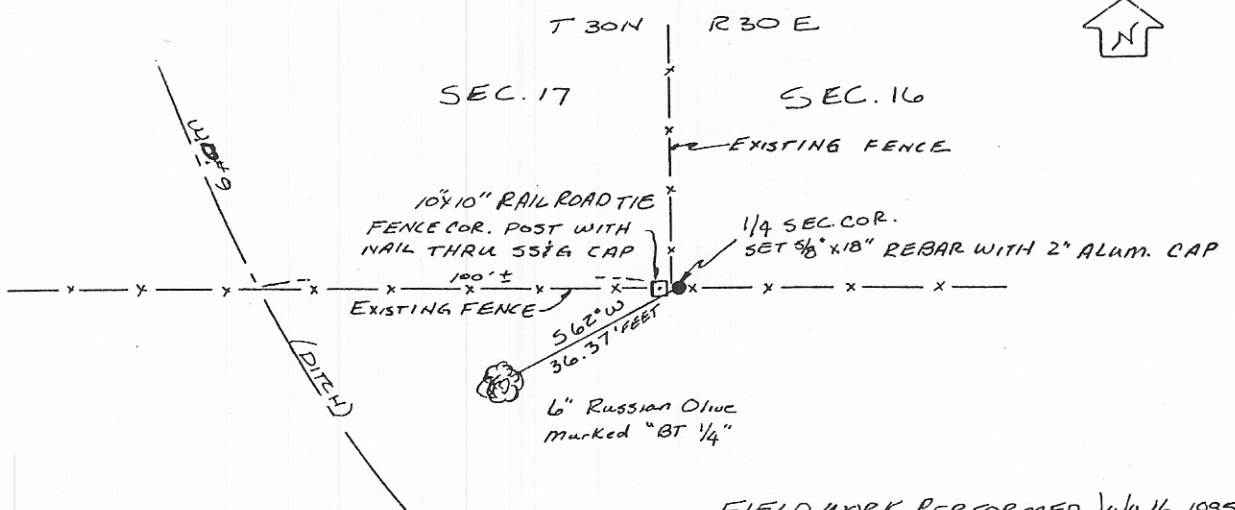
Corner East 1/4 Section 17 T. 30 N. R. 30 E. P.M.M. Phillips County

1. ORIGINAL RECORD: Unknown

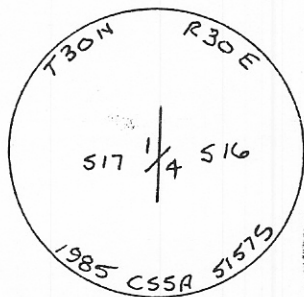
SUBSEQUENT RECORD: Position shown on Certificate of Survey No.127-no description.

2. EVIDENCE FOUND: Found 30d nail driven thru a SS&G yellow plastic cap in top of a 10"x10" railroad tie fence corner post, top of post is leaning westery ± 1 foot relative to the base. Found stone marked "1/4" lying loose on surface near the corner post.

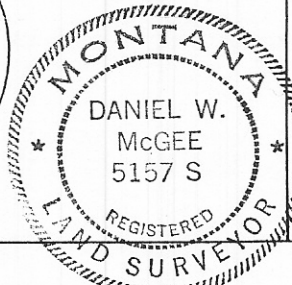
3. MONUMENTATION: Set a 5/8"x18" rebar with 2" aluminum cap marked as shown below 1.5' East of SS&G yellow plastic cap in top of fence post at the point of intersection of existing E-W and North fence lines @ the East base of the 10"x10" railroad tie fence corner post, painted and flagged, and established the following reference monuments:  
 A 6" Russian Olive tree, marked "BT 1/4" bears S 62° W, 36.37 feet from corner.



CAP MARKED AS SHOWN



SKETCH OF CORNER



FIELD WORK PERFORMED July 16, 1985

CERTIFICATION

I, T.J. Embreus  
 certify the information shown hereon is true and correct.  
 Signature Ground Party Chief

I, Daniel W. McGee  
 certify that this Corner Record correctly represents work performed by me or under my direction in compliance with the "Corner Recordation Act" (70-22-101, et seq., M.C.A.)  
 Signature of Surveyor & Seal

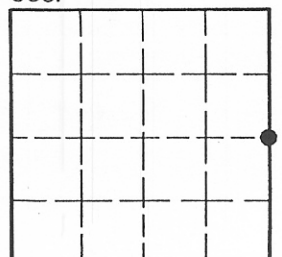
Date: 9/5/85 Reg. No. 5157S

Employer: CHRISTIAN SPRING SIEGARCH ASSOC. BILLINGS, MT.

Office of Clerk and Recorder, County of \_\_\_\_\_ . This "corner record" was filed for record on \_\_\_\_\_ was noted on the cross-index plat and is assigned page No. \_\_\_\_\_, in book No. \_\_\_\_\_

County Official

Sec. 17



• - corner this sheet

Cross Index No. L-9 T. 30 N. R. 30 E. P.M.M.