

INSTRUCTIONS

1. Original and/or subsequent record used to evaluate the corner position.
2. Description of evidence found, note discrepancies in the record, state method of establishing lost or obliterated corners.
3. Description of monument and accessories set to perpetuate the corner position.
4. Sketch of corner, show all pertinent data which can best be shown in a sketch example, corner marking, topography ties, position of accessories, etc.
5. Certification must be signed and sealed by Land Surveyor registered in the State of Montana.
6. Fill in Cross Index & Section Diagram at bottom of sheet.

CERTIFIED CORNER RECORDATION

Corner N 1/4 SEC COR T. 30N R. 30E P.M.M. PHILLIPS County

GLO RECORD

From page 13 (570) field notes book 2527 dated June 9, 1897.

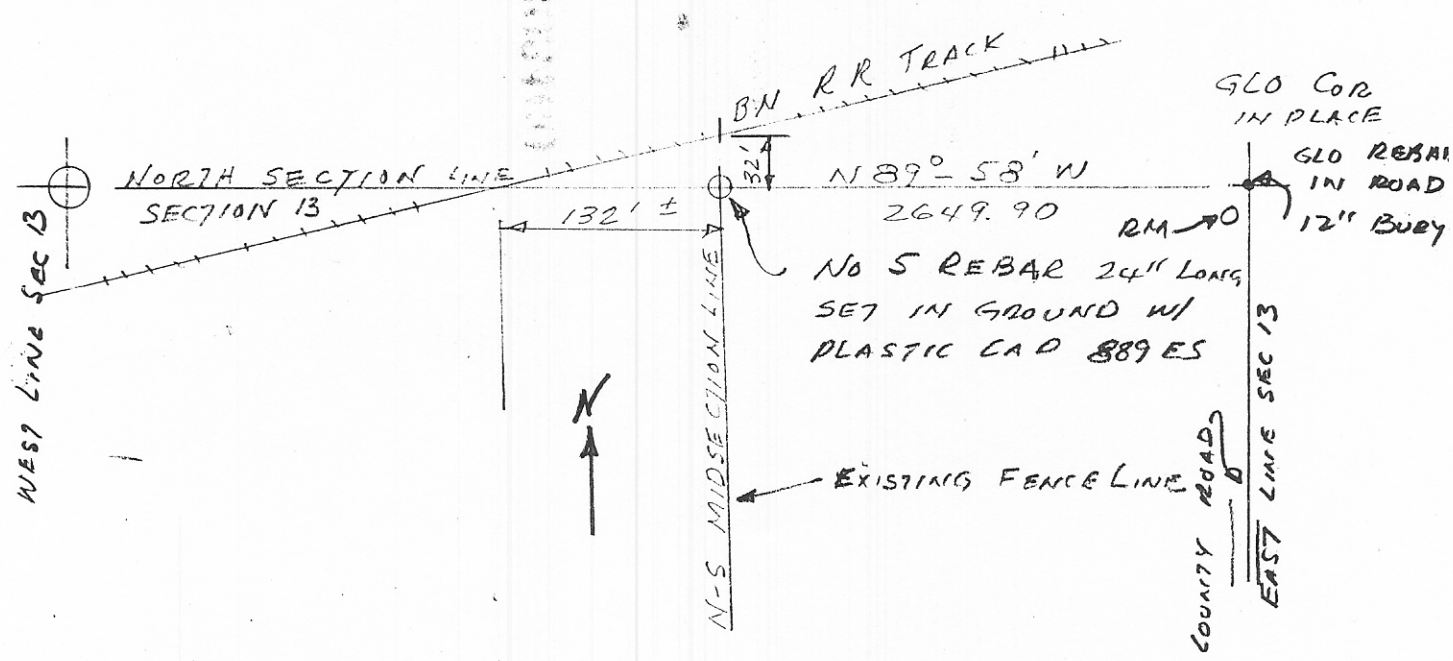
North on a true line:

40.15 ch Set a granite stone 12x10x6 ins. 8 ins. in the ground for 1/4 sec. cor. marked 1/4 on N face; dug pits 18x18x12 ins E & W of stone 5 1/2 ft. and raised a mound of earth 1 1/2 ft high 3 1/2 base alongside.

42.15 ch Great Northern Railway

EVIDENCE FOUND

The corner had been excavated due to the regrading of the railroad in this area that followed the 1897 survey. Set a No. 5 rebar 24 inches long with plastic cap 889ES at record distance which agreed with the tie intersection of the railroad and section line given in the record, and fit well with the other corners of the Section. The Northeast section corner measured essentially the same distance from the railroad track as given in the notes, so I considered the distances and ties reasonably accurate and set the 1/4 corner accordingly. See the dimensions given in the sketch below.



CERTIFICATION

1. DONALD C. BECKMAN
 certify the information shown herein is true and correct.
 Signature of Record Recipient

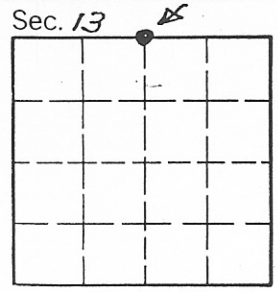
1. DONALD C. BECKMAN
 certify that this Corner Record correctly represents work performed by me or under my direction in compliance with the "Corner Recordation Act" (70-22-101, et seq., M.C.A.)
 Signature of Surveyor & Seal

Date: 8-8-89 Reg. No. 889ES

Employer: _____

SKETCH OF CORNER

Office of Clerk and Recorder, County of Phillips. This "corner record" was filed for record on 8-9-89 was noted on the cross-index plat and is assigned page No. CR # 286, in book No. _____



County Official _____
Cross Index No. U 23 T. 30N R. 30E P.M.M.