

CA # 287

INSTRUCTIONS

1. Original and/or subsequent record used to evaluate the corner position.
2. Description of evidence found, note discrepancies in the record, state method of establishing lost or obliterated corners.
3. Description of monument and accessories set to perpetuate the corner position.
4. Sketch of corner, show all pertinent data which can best be shown in a sketch example, corner marking, topography ties, position of accessories, etc.
5. Certification must be signed and sealed by Land Surveyor registered in the State of Montana.
6. Fill in Cross Index & Section Diagram at bottom of sheet.

CERTIFIED CORNER RECORDATION

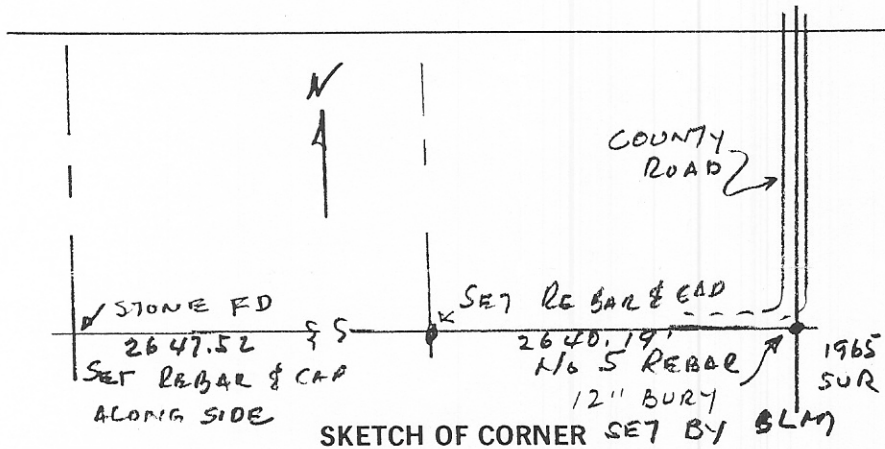
Corner-- SE SECTION CORNER T. 30N R. 30E P.M.M. PHILLIPS County  
SECTION 13

GLO RECORD:

FROM FIELD NOTES 2489 MARCH 16TH 1891  
CH 80.00 Set a granite stone 14x11x10 ins 10 ins in the ground for cor. to secs 13,18,19, and 24 marked with 3 notches on N.&S edges, dug pits 18x18x12 ins. in each sec. 5 1/2 ft distant and raised a mound of earth 2 ft high 4 1/2 ft. base alongside.

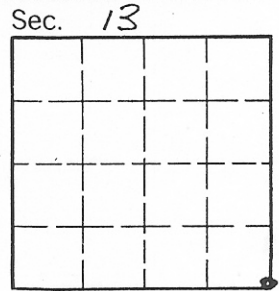
EVIDENCE FOUND:

We were unable to find the stone described. We did find the No. 5 rebar with foot bury at the corner point as indicated by record bearing and quite close distance, which rebar was placed by the BLM 1965 survey, and is accepted to be the corner.



CERTIFICATION  
 I, DONALD BECKMAN  
 certify the information shown herein is true and correct.  
Donald C. Beckman  
 Licensed Land Party Chief  
 I, DONALD BECKMAN  
 certify that this Corner Record correctly represents work performed  
 by me or under my direction in compliance with the "Corner  
 Recordation Act, 22-101, et seq., M.C.A."  
Donald Beckman  
 Registered Professional Land Surveyor & Seal  
 Date: 8-8-89 Reg. No. 889 ES  
 Employer: \_\_\_\_\_

Office of Clerk and Recorder, County of Phillips. This "corner record" was filed for record on 8-9-89 was noted on the cross-index plat and is assigned page No. CA # 287, in book No. \_\_\_\_\_



County Official \_\_\_\_\_  
Cross Index No. N 25 T. 30N R. 30E P.M.M.