

**INSTRUCTIONS**

1. Original and/or subsequent record used to evaluate the corner position.
2. Description of evidence found, note discrepancies in the record, state method of establishing lost or obliterated corners.
3. Description of monument and accessories set to perpetuate the corner position.
4. Sketch of corner, show all pertinent data which can best be shown in a sketch example, corner marking, topography files, position of accessories, etc.
5. Certification must be signed and sealed by Land Surveyor registered in the State of Montana.
6. Fill in Cross Index & Section Diagram at bottom of sheet.

**CERTIFIED CORNER RECORDATION**

Corner NORTH 1/4 COR. SECTION 9 T. 30 N, R. 31 W, P.M.M., LINCOLN County

**RECORD:**

Brass cap on iron post, set in concrete, level with surface of ground and marked:

T30N R31W  
 $\frac{1}{4}$   $\frac{S}{S}$   $\frac{4}{9}$   
 1962

from which:

- a spruce 12" dia. bears N10°E 55 links (36.3')
- a "X" chiseled on top of conc. curb, 6" wide, bears EAST 9 links (5.91')

**FOUND:**

2 1/2" B.C. set in concrete, down 1.6' from ground surface.

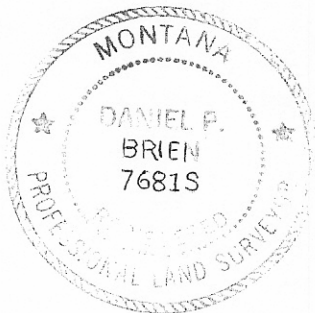
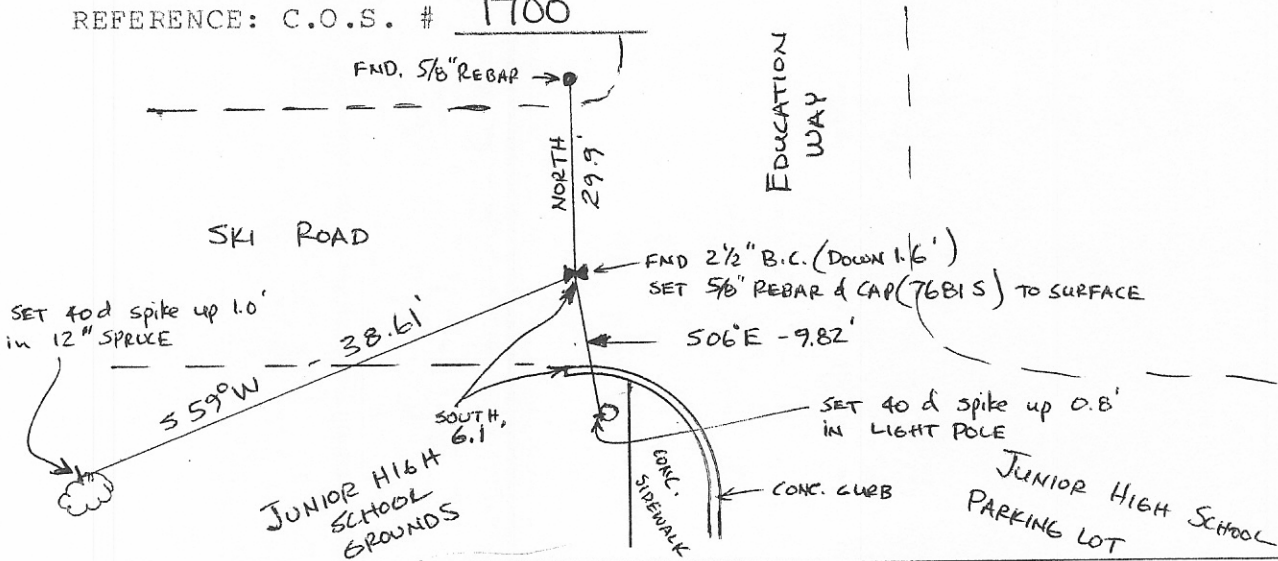
**SET:**

1.5'x5/8" rebar and yellow plastic cap marked "BRIEN 7681 S" on top of B.C. to surface, from which:

- a set 40d spike in a 12" spruce bears S59°W 38.61'
- a set 40d spike in a light pole bears S06°E 9.82'
- a found 5/8" rebar bears North 29.9'

NOTE: Used a Silva hand compass with 18° E declination preset.

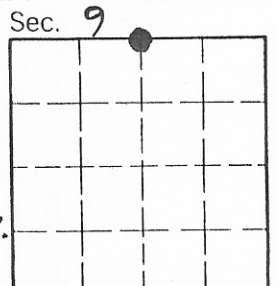
REFERENCE: C.O.S. # 1700



**CERTIFICATION**  
 I, DANIEL P. BRIEN  
 certify the information shown herein is true and correct.  
 Signature Ground Party Chief  
 I, DANIEL P. BRIEN  
 certify that this Corner Record correctly represents work performed by me or under my direction in compliance with the "Corner Recordation Act" (70-23-101 et seq., M.C.A.)  
Daniel P. Brien  
 Signature of Surveyor & Seal  
 Date: 5/16/89 Reg. No. 7681 S  
 Employer: HERSMAN LAND SURVEY

**SKETCH OF CORNER**

Office of Clerk and Recorder, County of Lincoln. This "corner record" was filed for record on Aug 7, 1989 was noted on the cross-index plat and is assigned page No. 4066, in book No. \_\_\_\_\_  
Janet M. Sigal by Diet Buschhoff, Dep.  
 County Official



Cross Index No. E-11 T. \_\_\_\_\_ R. \_\_\_\_\_ P.M.M.

• - corner this sheet