

CERTIFIED CORNER RECORD/ MON

Corner: W 1/4 Sec. 14 Twp. 30N., R.31 W., P.M.M.

Lincoln County Montana

Record : Per BLM records of 1973 Johnnie R. Mendez-Cadastral Surveyor From the 1/4 sec. cor. of secs. 14 and 15, reestablished by J.W. Ninneman, RLS No. 534, in 1966, determined from ties as shown on plats of subdivisions, and is recorded in the Lincoln County Courthouse. This point has long been recognized as the cor. by adjacent landowners, and is accepted as the best available evidence of the original cor. position.

At the corner point

Set an iron post, 20 ins. long 2 1/2 ins. diam. 24 ins. in the ground, in a collar of stone, with brass cap mkd.

T 30 N., R. 31 W

1/4

S15 | S 14

1973

From Which:

A Fir, 24 ins. diam. bears S. 19 1/3° W., 271 lks. dist., mkd. 1/4 S15 BT.

An X. chiseled on a concrete sidewalk, bears S. 73 1/2" W., 80 lks. dist.

The NE cor. of a brick church (L.D.S.), bears S. 57 1/4" W., 348 lks. dist.

Found Evidence : A 3 1/4 inch BLM Brass Cap marked

T 30 N., R.31W

1/4

S15 | S 14

1973

The NE cor. of a brick church (L.D.S.) bears S 87 1/2" W., 348 lks. dist.

Perpetuation : Established the following two bearing objects: For the West 1/4 of Section 14.

From Which:

A steel fence post bears S 74° E 13.4 ft dist. for Sec. 14

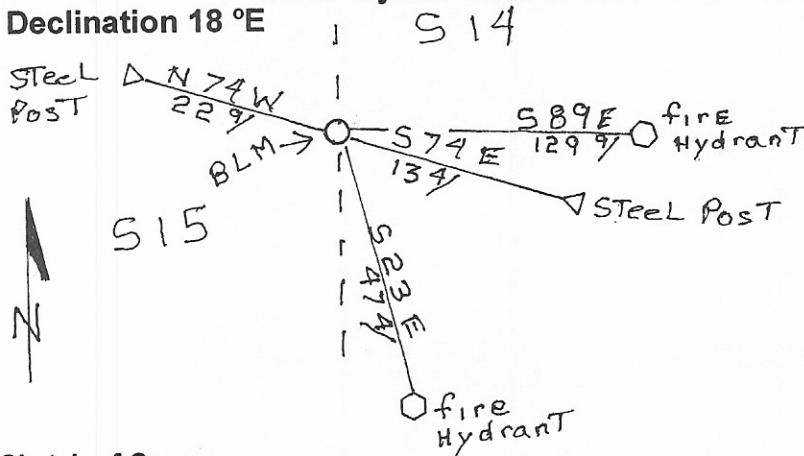
A steel fence post bears N 74° W 22.9 ft dist. for Sec. 15

Attached warning and bearing tree signs to both posts.

A fire hydrant bears S 89° E 129.9 ft dist.

A fire hydrant bears S 23° E 47.4 ft dist.

Declination 18 °E

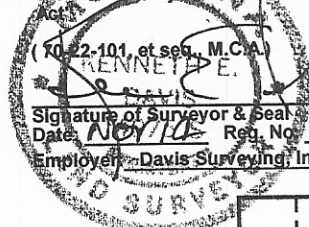


CERTIFICATION

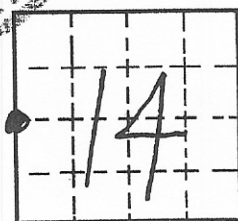
I, George Clark certify the information shown herein is true and correct

Signature of Ground Party Chief

I, Ken Davis, RLS certify that this Corner Record correctly represents work performed by me or under my direction in compliance with the "Corner Recordation Act"



Section



Sketch of Corner

Office of Clerk and Recorder, County of Lincoln. This "corner record" was filed for record on 11/16/01 was noted on the cross-index plat and is assigned page No. 10542 in book No. Total M. Cummins by RLS County Official

Cross Index No. Twp. 30 N., R. 31 W., P.M.M. • THIS CORNER