

CERTIFIED LAND CORNER RECORDATION

DESCRIPTION OF CORNER EVIDENCE FOUND, AND ORIGINAL RECORD (IF KNOWN)

The section corner of section's 23-24-25 and 26, T30N-R31W was originally a stone marked with a cross and buried approx. 1' to 2' below the surface of the county road, with one witness tree for a reference.

DESCRIPTION OF MONUMENT AND ACCESSORIES ESTABLISHED TO PERPETUATE THE ORIGINAL LOCATION OF THIS CORNER:

Date of work: August 9, 1963

I hereby certify that the section corner of section's 23-24-25 and 26, T30N R31W is covered by approx. 4 feet of highway embankment on an approach at highway Sta. 147+33 Rt. of centerline. A steel pin is driven into the oil mat directly over the cross on the stone. Also the corner is referenced with 4 steel pins 1" by 30" set at the distances shown with guard stakes at each pin giving distances to the corner.

SKETCH, WITH COURSE AND DISTANCE TO ADJACENT CORNERS IF DETERMINED IN THIS SURVEY. (MAY SKETCH OR PASTE REPRODUCTION ON REVERSE SIDE.)

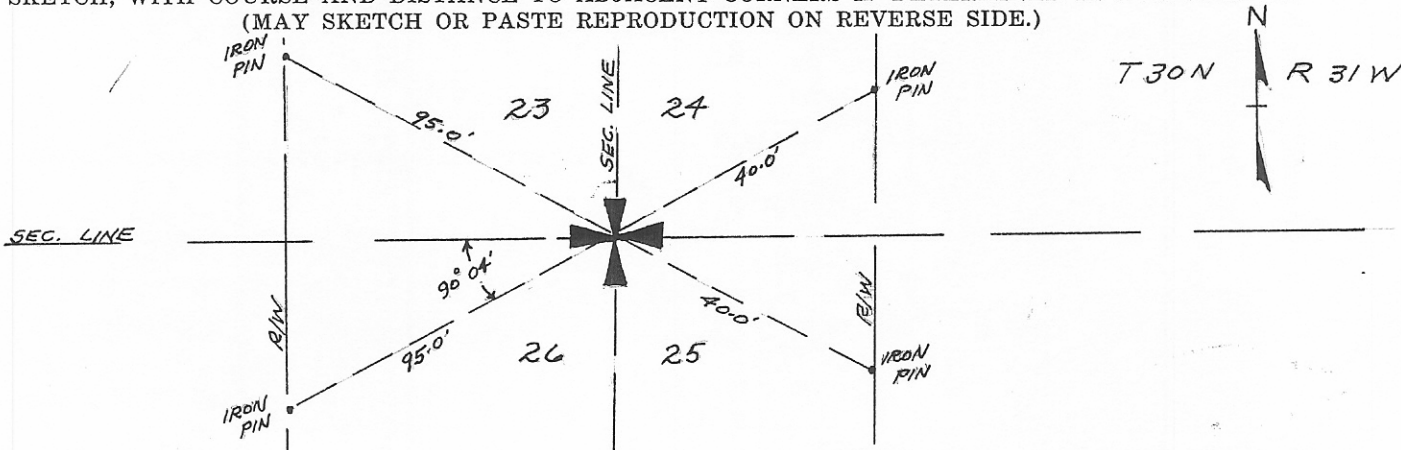


DIAGRAM OF CORNER:

Surveyor's Seal

I, Lorren D. Claridge
 certify that the information shown herein is true and correct.

Lorren D. Claridge
 Signature of Ground Party Chief

I, DOUGLAS M. BISHOP
 certify that I have carefully performed or reviewed the work done on the diagrammed corner as reported on this recordation form and approve the same.

Douglas M. Bishop
 Signature of Surveyor

1834-5
 Registration Number

N.

Office of Clerk and Recorder, County of Lincoln

This "corner record" was filed for record on the 19th day of September, 1963, was noted on the cross-index plat and is

assigned page No. 1, in book No. 1

M. M. MANSFIELD, *Mae Watson*
 County Official Deputy

Cross Index No. R-21 T. 30 R. 31 Mer.